

# nVent ERIFLEX Flexbus Conductor

## Power Utilities



nVent ERIFLEX Flexbus Conductor is ready-to-use from one side with direct connection to busbar or circuit-breaker palm. It is an innovative and patented connection solution between two pieces of electrical equipment (such as a transformer, switchboard or generator). Flexbus Advanced maintains a high level of reliability and creates an easy and customizable connection on-site without additional design study, specific specialized workforce or expensive tools. The Flexbus Conductor is insulated with a low-smoke, halogen-free, flame-retardant (LSHFFR), high-temperature and class II material. Flexbus Conductor is a flexible, copper-plated, aluminum flat braid with insulation available from 2 to 10 meters length and under different cross section for 500A to 4500A applications. It allows for connection from the power supply to switchgear with only one conductor per phase up to 1600kVA and with two conductors per phase up to 3150kVA.

### 认证



### 功能

Flexible insulated copper-plated, aluminum flat braid

Better current/ampacity than cable due to skin effect

Much more flexible than cable

No bending radius to respect

Ready-to-use from one side with direct connection on busbar or circuit breaker palm

Only one conductor per phase from 400kVA (560 A) to 1600kVA (2250 A) and two conductors per phase for 2000kVA (2800 A) to 3150kVA (4435 A)

## 技术参数

Table 1/5

物料号	订货号	长度 1 (L1)	长度 2 (L2)	连接器表面	绝缘伸长率	绝缘厚度
FLEXCOND128 OL10	508058	10,000 mm	100 mm	镀锡	500 % Min	2.5 – 3.5 mm

Table 2/5

物料号	订货号	介电强度	Euroclass CPR	无卤素等级	低烟雾等级	机械耐受等级
FLEXCOND128 OL10	508058	20 kV/mm	Eca - s2、d2、a3	UL® 2885, IEC® 60754-1, IEC® 62821-2	IEC® 61034-2, ISO 5659-2, UL® 2885	IK09

Table 3/5

物料号	订货号	抗紫外线等级	标称电压, IEC	工作温度	ΔT 60 K	宽度 1 (W1)
FLEXCOND128 OL10	508058	UL® 2556, UL® 854, IEC® 60 364: AN3 Level	1,000 VAC, 1,500 VDC	-50 to 115 °C	1,984 A	108 mm

Table 4/5

物料号	订货号	宽度 2 (W2)	高度 [1] (H1)	高度 [2] (H2)	单位重量	A
FLEXCOND128 OL10	508058	100 mm	31.1 mm	18 mm	56.800 kg	50 mm

Table 5/5

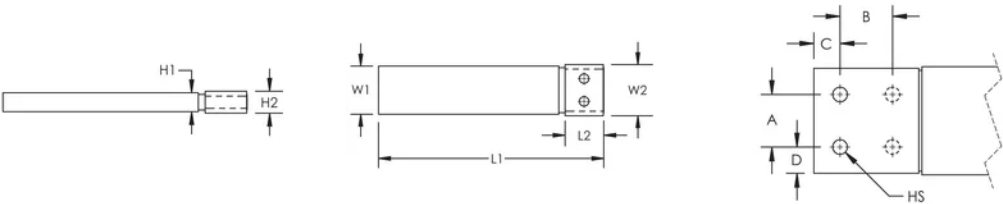
物料号	订货号	B	C	D	2 巴电流系数, 非 对称	2 巴电流系数, 对 称
FLEXCOND128 OL10	508058	50 mm	25 mm	25 mm	1.48	2

安装标准: AS 3008;BS 7671;CEI 64-8;CSN;DIN VDE 0100;HD 384;IEC® 60364;NBR 5410;NEN 1010;NFC 15-100;NIBT-NIN;NP (2002);ÖNORM;REBT;RGIE-AREI

Optional extender available for more connection possibilities.

根据温升的载流系数								
温升	$\Delta T\ 30^{\circ}C$	$\Delta T\ 40^{\circ}C$	$\Delta T\ 45^{\circ}C$	$\Delta T\ 50^{\circ}C$	$\Delta T\ 55^{\circ}C$	$\Delta T\ 60^{\circ}C$	$\Delta T\ 65^{\circ}C$	$\Delta T\ 70^{\circ}C$
降容系数	0.71	0.82	0.87	0.91	0.96	1.00	1.04	1.08

图



警告

应仅根据 nVent 的产品说明书与培训材料安装并使用 nVent 的产品。可访问 [www.nvent.com](http://www.nvent.com) 获取说明书，或者向您的 nVent 客服代表索取。错误安装、使用不当、滥用或未能完全遵守 nVent 的说明与警告，可能会造成产品故障、财产损失、严重的人身伤害及死亡和/或使得保修服务无效。



我们强大的品牌组合:

CADDY   ERICO   HOFFMAN   ILSCO   SCHROFF   TRACHTE