

# nVent LENTON Lock B-Series Shear Bolt Coupler, Coated



Coated reinforcing bar is used in place of plain reinforcing bars to protect against corrosion. Typical applications include bridges, parking structures, pavement, marine structures and repair work. nVent LENTON couplers and mechanical anchors are available in multiple coatings to meet specific job requirements.

## 功能

Requires no special bar end preparation such as sawing

Installs quickly and easily using simple, off-the-shelf hand tools

Bolt heads shear off when bolt torque is achieved, providing for simple visual inspection

Designed to work as a one-step transition/reducer

Rebar centering pin can be removed to allow the coupler to fully pass onto the reinforcing bar for applications such as closure pours

## 技术参数

完成标准: ASTM® B695 50 类, 带透明三价铬酸盐密封件

完成: 机械镀锌

材料: 钢

Table 1/2

物料号	钢筋尺寸, 公制	钢筋尺寸, 美国	钢筋尺寸, 加拿大	直径 1 (Ø1)	直径 2 (Ø2)	长度 (L)
LL12B1MG	12 mm	#4	10M	29 mm	15 mm	127mm

物料号	钢筋尺寸, 公制	钢筋尺寸, 美国	钢筋尺寸, 加拿大	直径 1 (Ø1)	直径 2 (Ø2)	长度 (L)
LL16B1MG	14 mm, 16 mm	#5	15M	35 mm	19 mm	159mm
LL20B1MG	18 mm, 20 mm	#6	20M	44 mm	24 mm	191mm
LL22B1MG	22 mm	#7		48 mm	28 mm	222mm
LL25B1MG	25 mm	#8	25M	54 mm	30 mm	254mm
LL28B1MG	28 mm, 30 mm	#9	30M	60 mm	34 mm	287mm
LL32B1MG	32 mm	#10		65 mm	38 mm	323mm

Table 2/2					
物料号	插座宽度 (SW)	螺栓数量	圆形螺栓数量	扭矩 (TQ)	单位重量
LL12B1MG	13mm	6	2	110 N • m	0.57 kg
LL16B1MG	13mm	6	2	110 N • m	0.92 kg
LL20B1MG	13mm	8	2	110 N • m	1.68 kg
LL22B1MG	16mm	8	2		2.28 kg
LL25B1MG	16mm	8	2	340 N • m	3.37 kg
LL28B1MG	16mm	10	2	340 N • m	4.56 kg
LL32B1MG	21mm	8	2	680 N • m	5.92 kg

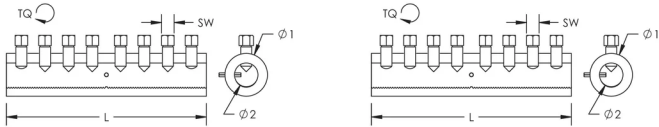
## 其他产品详情

Bolt length may vary after the bolt heads are sheared off. Bolt heads are not required to be removed as long as the appropriate bolt torque is achieved.

When using an impact wrench, size the wrench for 2x the bolt torque. If using an air impact wrench, check the air pressure, torque rating and air flow requirements before starting installations.

Refer to complete installation instructions provided with the product or available at [nVent.com/LENTON](http://nVent.com/LENTON) prior to commencing installation.

图



警告

应仅根据 nVent 的产品说明书与培训材料安装并使用 nVent 的产品。可访问 [www.nvent.com](http://www.nvent.com) 获取说明书，或者向您的 nVent 客服代表索取。错误安装、使用不当、滥用或未能完全遵守 nVent 的说明与警告，可能会造成产品故障、财产损失、严重的人身伤害及死亡和/或使得保修服务无效。

北美	欧洲	欧洲	亚太地区
+1.800.753.9221	荷兰：	德国：	上海：
，按 1 转客户服务	+31 800-0200135	800 1890272	+ 86 21 2412 1618/19
，按 2 转技术支持	法国：	其他国家/地区：	悉尼：
	+33 800 901 793	+31 13 5835404	+61 2 9751 8500



我们强大的品牌组合：

CADDY   ERICO   HOFFMAN   ILSCO   SCHROFF   TRACHTE