

D16A Mechanical Anchor with Extension



The nVent LENTON D16A Mechanical Anchor with Extension provides a method of splicing and anchoring reinforcing bar in segmental concrete construction applications that have limited space or are severely congested. The large head significantly reduces required embedment lengths. The anchors are a combination of standard nVent LENTON Terminator D16 Mechanical Anchors and ELFM Female-to-Male Extensions.

Typically used in thin wall, wall/slab and beam/column applications, the D16A Mechanical Anchor with Extension easily attaches to the form panels using standard nVent LENTON accessories. When the form is stripped, the protected threaded end of the coupler is exposed. Simply remove the protective cap or accessory and install the subsequent nVent LENTON taper threaded dowel bar. This system eliminates hooked bar congestion, protruding dowels and the need to drill holes in expensive formwork.

功能

Reduces congestion

Utilizes standard nVent LENTON accessories

Head area exceeds 5x bar area (net 4x)

Components also sold separately

Available in customer specified lengths

技术参数

完成: 普通

材料: 钢

Table 1/2						
物料号	钢筋尺寸, 公制	钢筋尺寸, 美国	钢筋尺寸, 加拿大	直径 1 (Ø1)	直径 2 (Ø2)	长度 1 (L1)
EL25D16A125N	25 mm	#8	25M	35 mm	60 mm	125 mm
EL28D16A130N	28 mm	#9	30M	40 mm	65 mm	130 mm
EL32D16A138N	32 mm	#10		45 mm	75 mm	138 mm

Table 2/2			
物料号	长度 2 (L2)	杆深 (BD)	单位重量
EL25D16A125N	85 mm	40mm	1.3 kg
EL28D16A130N	88 mm	42mm	1.7 kg
EL32D16A138N	93 mm	45mm	2.4 kg

设计符合： ACI 318;AS3600;ASTM A970

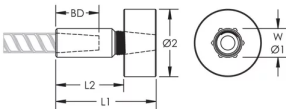
其他产品详情

Anchorage calculations such as concrete breakout strength and development lengths are the responsibility of the design professional.

Bar dimensions and weights listed may vary by region. Coupler sizes not shown may be available by special order. Contact your nVent LENTON representative for more information.

Thread does not need to be flush with end of nVent LENTON Terminator. Thread may be +/- 2 threads from backside of coupler.

图



警告

应仅根据 nVent 的产品说明书与培训材料安装并使用 nVent 的产品。可访问 www.nvent.com 获取说明书，或者向您的 nVent 客服代表索取。错误安装、使用不当、滥用或未能完全遵守 nVent 的说明与警告，可能会造成产品故障、财产损失、严重的人身伤害及死亡和/或使得保修服务无效。

北美	欧洲	欧洲	亚太地区
+1.800.753.9221	荷兰：	德国：	上海：
，按 1 转客户服务	+31 800-0200135	800 1890272	+ 86 21 2412 1618/19
，按 2 转技术支持	法国：	其他国家/地区：	悉尼：
	+33 800 901 793	+31 13 5835404	+61 2 9751 8500



我们强大的品牌组合：

CADDY ERICO HOFFMAN ILSCO SCHROFF TRACHTE