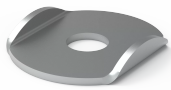


Rear Busbar Support Fixation For Power Distribution, MSBF



This busbar saddle, MSBF, has been tested according to IEC 61439 and is available off the shelf. It is easy to mount and connects two bars with a thickness of 10 mm, to allow for mounting to the vertical busbar support (MSFH).

功能

Description: Saddle to fix the bars to the rear busbar support, with its special design helps us to fix properly the bars to the support. The bolts, washers and nuts must be ordered separately.

Material: 2 mm zinc plated steel.

Delivery: 20 pieces.

A flexible and reliable solution with a short delivery time, that ensures procurement, design and installation can be done efficiently reducing the labour time required

Nuts, bolts and washers must be ordered separately however, standard ones within the market place are suitable

Saddle to fix the bars to the rear busbar support, with its special design helps us to fix properly the bars to the support

The bolts, washers and nuts must be ordered separately

Package Quantity: 20

技术参数

Table 1/1						
物料号	高度	宽度	深度	外壳材料	产品系列	材料
MSBF20	40mm	34mm	6.4mm	低碳钢	独立	钢

警告

应仅根据 nVent 的产品说明书与培训材料安装并使用 nVent 的产品。可访问 www.nvent.com 获取说明书，或者向您的 nVent 客服代表索取。错误安装、使用不当、滥用或未能完全遵守 nVent 的说明与警告，可能会造成产品故障、财产损失、严重的人身伤害及死亡和/或使得保修服务无效。



我们强大的品牌组合:

CADDY ERICO HOFFMAN ILSCO SCHROFF TRACHTE