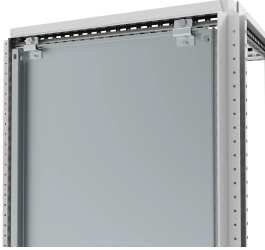


安装板支架，用于后安装，MPA-R



This mounting plate fixation kit allows for mounting of a mounting plate from the rear. It can be positioned flush with the enclosure frame or set back behind the enclosure frame with an extra of +20 mm, increasing the useful depth of the enclosure.

功能

Description: To fix mounting plates to the enclosure from rear. The kit includes brackets for fixing the mounting plate flush with the enclosure frame or set back behind the enclosure frame, adding +20mm of useful depth for mounting components. These brackets are needed when rear fixation is required or when the enclosure is ordered without the mounting plate (PE) as an alternative to MPA06/MPA04. Unmounting from both the front and rear is possible.

Material: 3 mm zinc plated steel.

Pack quantity: 2 top brackets, 2 bottom brackets, 2 brackets for flushing the mounting plate with the frame and 2 brackets for setting the mounting plate back behind the frame with mounting accessories.

技术参数

Table 1/1						
物料号	订货号	高度	宽度	深度	材料	完成
MPA04R	MPA04R	50mm	50mm	38mm	低碳钢	镀锌

警告

应仅根据 nVent 的产品说明书与培训材料安装并使用 nVent 的产品。可访问 www.nvent.com 获取说明书，或者向您的 nVent 客服代表索取。错误安装、使用不当、滥用或未能完全遵守 nVent 的说明与警告，可能会造成产品故障、财产损失、严重的人身伤害及死亡和/或使得保修服务无效。



我们强大的品牌组合:

CADDY ERICO HOFFMAN ILSCO SCHROFF TRACHTE