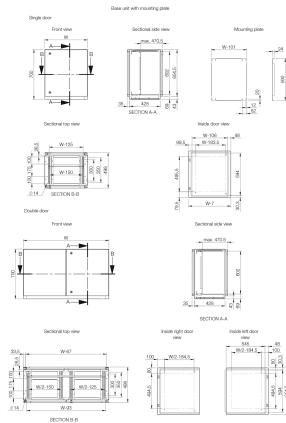


Console System, MPC



This mild steel combinable console system, MPC, has a IP 55/56 protection degree. It includes three interchangeable sections, top, desk and bottom. The system is very flexible and the various possible combinations can meet many design requirements. The ergonomic design of the top and desk units allows for easy installation and access to HMI-equipment, and increases the mounting space available. Stainless steel panels may be used as an alternative for some parts of the console, should it be exposed to chemical agents, etc.

工业标准

UL 508A Listed; Type 12, 13, 4; File No. E92044

cUL C22.2 No. 14-13; Type 12, 13, 4; File No. E92044

IEC 61439

CE, UK CA, UL, EAC

IP

功能

Material: Body and door: 1.5 mm mild steel. Rear panel: 1.5 mm mild steel. Bottom plates: 1.2 mm galvanized steel. Mounting plate: 2.5 mm galvanized steel.

Body: Folded and seam welded. Console construction includes a base that provides a distance between the floor and the lower part of the door/s, acting as an integrated plinth.

Doors and panels: Single folded surface mounted with hinges, allowing left and right-hand opening to base door. Top section and desk panels held open by self engage/self release mechanical panel stays. Concealed hinges, allowing 90° opening on the desk. Double door on 1200 and 1600 mm wide base units.

Mounting plate: Standard mounting plate in base unit. Fixed by fixing brackets on C rail, top and bottom, for depth adjustment. Optional in desk and top section units.

Lock: Double-bit 3 mm locks for top section and desk unit. For base, two double-bit 3 mm locks. Other options available. See wall mounting section.

Cable access: Bottom opening in base unit for cable access. Bottom plates for cable glanding supplied as standard.

Earthing: M8 threaded studs on bodies, doors and rear panels.

Finish: RAL 7035 structured powder coating.

Protection: Single door: IP 66, TYPE 4, 12, 13, IK 10. Double door: IP 55, TYPE 12, 13, IK 10.

Delivery: The base unit is provided with a mounting plate as standard. Desk and top section units have mounting plates provided as accessories. All top and base openings can be closed by choosing the appropriate accessory plate. Suitable nuts and washers for the various earthing studs are provided.

Mounting plate: Standard mounting plate in base unit; fixed by fixing brackets on C rail, top and bottom, for depth adjustment; optional in desk and top section unit

技术参数

厚度: 1.5mm
颜色: 浅灰色
材料: 低碳钢
完成: 粉末涂层
颜色代码: RAL 7035

Table 1/1						
物料号	高度	宽度	深度	包含安装板	最大安装深度	快速发货
MPC061R5	500mm	600mm	494mm	否		No
MPC062R5	250mm	600mm	985mm	否		No
MPC063R5	700mm	600mm	500mm	是	470.5mm	No
MPC081R5	500mm	800mm	494mm	否		No
MPC082R5	250mm	800mm	985mm	否		No
MPC083R5	700mm	800mm	500mm	是	470.5mm	No
MPC101R5	500mm	1000mm	494mm	否		No
MPC102R5	250mm	1000mm	985mm	否		No
MPC103R5	700mm	1000mm	500mm	是	470.5mm	No
MPC121R5	500mm	1200mm	494mm	否		No
MPC122R5	250mm	1200mm	985mm	否		No
MPC123R5	700mm	1200mm	500mm	是	470.5mm	No
MPC161R5	500mm	1600mm	494mm	否		No
MPC162R5	250mm	1600mm	985mm	否		No

物料号	高度	宽度	深度	包含安装板	最大安装深度	快速发货
MPC163R5	700mm	1600mm	500mm	是	470.5mm	No

其他产品详情

Note: Only 1200 mm and 1600 mm wide consoles have double door.

警告

应仅根据 nVent 的产品说明书与培训材料安装并使用 nVent 的产品。可访问 www.nvent.com 获取说明书，或者向您的 nVent 客服代表索取。错误安装、使用不当、滥用或未能完全遵守 nVent 的说明与警告，可能会造成产品故障、财产损失、严重的人身伤害及死亡和/或使得保修服务无效。



我们强大的品牌组合:

CADDY ERICO HOFFMAN ILSCO SCHROFF TRACHTE