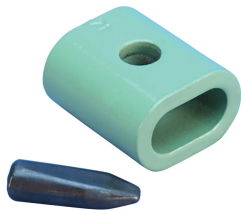


nVent LENTON Quick Wedge Mechanical Lap Coupler, Coated, Pin Included



The nVent LENTON Quick Wedge splice consists of an oval-shaped steel sleeve and a wedge pin. The sleeve is positioned around two very short overlapping steel bars. The wedge pin is inserted into a handheld hydraulic pin-driver and positioned on the sleeve. The pin is then driven through the pre-drilled hole in the sleeve and between the bars to complete the connection.

Coated reinforcing bar is used in place of plain reinforcing bars to protect against corrosion. Typical applications include bridges, parking structures, pavement, marine structures and repair work. nVent LENTON couplers and mechanical anchors are available in multiple coatings to meet specific job requirements.

功能

Short reinforcing bar overlap significantly reduces concrete removal in retrofit applications

Eliminates the need to custom cut and fit rebar to precise measurements

Quick installations result in accelerated job scheduling

Simple to use with only minimal training required

Splice offers quick visual inspection

Each package contains couplers, wedge pins and a spare grommet

Multiple coatings available

技术参数

完成标准: ASTM® A767 I 类

完成: 热浸镀锌

销钉表面处理: 机械镀锌

包装: 标准

材料: 钢

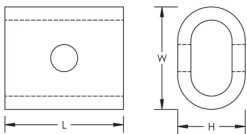
Table 1/2						
物料号	钢筋尺寸, 公制	钢筋尺寸, 美国	钢筋尺寸, 加拿大	长度 (L)	宽度 (W)	高度 (H)
ML12MMG	12 mm			48mm	40 mm	27 mm
ML5G	16 mm	#5	15M	57mm	49 mm	33 mm

Table 2/2	
物料号	单位重量
ML12MMG	0.23 kg
ML5G	0.36 kg

其他产品详情

Prior to installation, please read and understand the detailed instructions and safety notices provided in the nVent LENTON Quick Wedge Operator's Manual.

图



警告

应仅根据 nVent 的产品说明书与培训材料安装并使用 nVent 的产品。可访问 www.nvent.com 获取说明书，或者向您的 nVent 客服代表索取。错误安装、使用不当、滥用或未能完全遵守 nVent 的说明与警告，可能会造成产品故障、财产损失、严重的人身伤害及死亡和/或使得保修服务无效。

北美

+1.800.753.9221
，按 1 转客户服务
，按 2 转技术支持

欧洲

荷兰：
+31 800-0200135
法国：
+33 800 901 793

欧洲

德国：
800 1890272
其他国家/地区：
+31 13 5835404

亚太地区

上海：
+ 86 21 2412 1618/19
悉尼：
+61 2 9751 8500



我们强大的品牌组合：

CADDY ERICO HOFFMAN ILSCO SCHROFF TRACHTE