

# IBS Advanced Round Insulated Braided Conductor, Halogen Free

## Data Solutions

IBS Advanced Round Insulated Braided Conductor, Halogen Free are the ideal ready-to-install flexible wire replacement solution. Round IBS Advanced connect to the terminals of an electrical device without the need for additional accessories, such as angular connectors, spreaders, ring terminal connectors or extenders. Round IBS Advanced are available in cross sections of 120, 185 and 240 mm<sup>2</sup> (236.82, 365.10, and 473.65 kcmil), lengths from 330 to 1,030 mm (9.06" to 40.55"), and amperages ranging from 420 to 630 A.

Manufactured in an ISO 9001 2015 certified automated facility, round IBS Advanced is formed by weaving high-quality electrolytic copper wire to form a durable low voltage connector with maximum flexibility that allows for more compact power connections to electrical devices. The round IBS Advanced allows users to reduce the total size and weight of the installation, improving both design flexibility and assembly aesthetics.

The round IBS Advanced features pre-punched palms that are ready to connect out of the box. There are no lugs to purchase or install, making connections simpler and faster and eliminating faulty connections due to vibration or fatigue.

The advanced technology insulation is a high-resistance low smoke, halogen-free and flame retardant thermoplastic.

Round IBS Advanced does not generate corrosive gases and produces a relatively low smoke opacity in accordance with IEC 61034-2 and UL 2885. The low smoke characteristic improves the visibility conditions for people to be able to easily locate the emergency exit and also allows rescue workers to better assess an emergency situation. Round IBS Advanced means greater safety for individuals, less damage for your electrical equipment and less environmental impact.

The halogen-free feature enables a reduction in the quantity of toxic smoke. Round IBS Advanced does not contain any halogens, according to IEC 60754-1 and UL 2885, minimizing toxicity and making it the ideal product for



use in enclosed spaces such as data centers, rail, and public facilities such as hospitals and schools. This also facilitates the use of round IBS Advanced in specific applications such as submarines, switchboards and other enclosed environments that require a low emissions solution.

In addition to the above features, round IBS Advanced is also compliant with the UL 94-V0 testing standard and Glow wire test 960 °C. The flame retardant portion of the test illustrates the self-extinguish feature. This superior feature of round IBS Advanced is also shown by the Limiting Oxygen Index (LOI) at 30%. In case of fire, round IBS Advanced generates a limited quantity of smoke that is less damaging to your electrical equipment.

## CERTIFIERINGAR



## DESIGN

Resistant to vibration, improving reliability and performance

Insulated by high-resistance, halogen free, flame retardant and low smoke material

Tinned copper provides superior corrosion resistance

Improves assembly flexibility and aesthetics

Quick and easy installation

No additional cutting, stripping, crimping and punching needed

Conforms to NF EN 45545 obtaining an HL3 classification for chapters R22 and R23

Small wire diameter provides maximum flexibility

Dramatically smaller and more flexible than comparable cable based on ampacity

Better power density than cable with lower skin effect ratio

Reduces total installation cost

RoHS compliant

## SPECIFIKATIONER

<b>Kabeldiameter:</b>	0.15mm
<b>Isolationstjocklek:</b>	1.8mm
<b>Dielektrisk styrka:</b>	20
<b>Isoleringsförlängning:</b>	500%

<b>Max. arbetsspänning, UL 67:</b>	600
<b>Max. arbetsspänning, IEC/UL 758:</b>	1000; 1500
<b>Max. arbetsspänning, EN 50264-3-1:</b>	6000V
<b>Material:</b>	Koppar; Termoplastiska elastomer
<b>Uppfyller:</b>	IEC® 60439.1; IEC® 60695-2-11 (glödtrådtest 960 °C); IEC® 61439.1; IEC® 61439.1, klass II
<b>Halogenfri klassning:</b>	UL® 2885; IEC® 60754-1; IEC® 62821-1
<b>Lågt rökvärde:</b>	IEC® 61034-2; ISO 5659-2; UL® 2885
<b>Yta:</b>	Förtentat
<b>UV-resistensgrad:</b>	UL® 854; UL® 2556
<b>Certifieringsinformation:</b>	UL® 67; UL® 758
<b>Brandklassning:</b>	UL® 94V-0
<b>Arbetstemperatur:</b>	-50 to 115°C

Table 1/2

Katalognummer	Artikelnummer	Märkström vid vanlig tillämpning	Tvärsnitt	Ledarebredd	Ledartjocklek	Längd (L)
IBSADV120-1030	534519	400A	120mm <sup>2</sup>	24mm	10mm	1030mm
IBSADV120-330	534514	400A	120mm <sup>2</sup>	24mm	10mm	330mm
IBSADV120-430	534515	400A	120mm <sup>2</sup>	24mm	10mm	430mm
IBSADV120-530	534516	400A	120mm <sup>2</sup>	24mm	10mm	530mm
IBSADV120-630	534517	400A	120mm <sup>2</sup>	24mm	10mm	630mm
IBSADV120-830	534518	400A	120mm <sup>2</sup>	24mm	10mm	830mm
IBSADV185-1030	534525	500A	185mm <sup>2</sup>	24mm	15mm	1030mm
IBSADV185-330	534520	500A	185mm <sup>2</sup>	24mm	15mm	330mm
IBSADV185-430	534521	500A	185mm <sup>2</sup>	24mm	15mm	430mm
IBSADV185-530	534522	500A	185mm <sup>2</sup>	24mm	15mm	530mm

Katalognummer	Artikelnummer	Märkström vid vanlig tillämpning	Tvärsnitt	Ledarbredd	Ledartjocklek	Längd (L)
IBSADV185-630	534523	500A	185mm <sup>2</sup>	24mm	15mm	630mm
IBSADV185-830	534524	500A	185mm <sup>2</sup>	24mm	15mm	830mm
IBSADV240-1030	534531	630A	240mm <sup>2</sup>	32mm	15mm	1030mm
IBSADV240-330	534526	630A	240mm <sup>2</sup>	32mm	15mm	330mm
IBSADV240-430	534527	630A	240mm <sup>2</sup>	32mm	15mm	430mm
IBSADV240-530	534528	630A	240mm <sup>2</sup>	32mm	15mm	530mm
IBSADV240-630	534529	630A	240mm <sup>2</sup>	32mm	15mm	630mm
IBSADV240-830	534530	630A	240mm <sup>2</sup>	32mm	15mm	830mm

Table 2/2

Katalognummer	Artikelnummer	A	Diameter (Ø)	Hålstorlek (HS)	Enhetsvikt
IBSADV120-1030	534519	12mm	27mm	10.5mm	1.6kg
IBSADV120-330	534514	12mm	27mm	10.5mm	0.52kg
IBSADV120-430	534515	12mm	27mm	10.5mm	0.66kg
IBSADV120-530	534516	12mm	27mm	10.5mm	0.8kg
IBSADV120-630	534517	12mm	27mm	10.5mm	0.94kg
IBSADV120-830	534518	12mm	27mm	10.5mm	1.22kg
IBSADV185-1030	534525	12mm	31mm	10.5mm	2.3kg
IBSADV185-330	534520	12mm	31mm	10.5mm	0.82kg

Katalognummer	Artikelnummer	A	Diameter (Ø)	Hålstorlek (HS)	Enhetsvikt
IBSADV185-430	534521	12mm	31mm	10.5mm	1.07kg
IBSADV185-530	534522	12mm	31mm	10.5mm	1.26kg
IBSADV185-630	534523	12mm	31mm	10.5mm	1.48kg
IBSADV185-830	534524	12mm	31mm	10.5mm	1.9kg
IBSADV240-1030	534531	13mm	36mm	12.5mm	3.2kg
IBSADV240-330	534526	13mm	36mm	12.5mm	1.07kg
IBSADV240-430	534527	13mm	36mm	12.5mm	1.39kg
IBSADV240-530	534528	13mm	36mm	12.5mm	1.64kg
IBSADV240-630	534529	13mm	36mm	12.5mm	1.93kg
IBSADV240-830	534530	13mm	36mm	12.5mm	2.46kg

## YTTERLIGARE PRODUKTINFORMATION

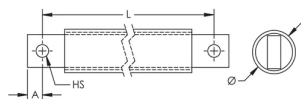
$\Delta T$  = Temperature of conductors – Internal temperature of panel.

This table indicates the temperature rise produced by chosen current in the given section. This calculation does not take into account the heat dissipation from the switch gear.

Distance between supports must not exceed 630 mm (17.8") according to IEC 61439-1.

Maximum Ampacity Ratings								
Cross Section (mm <sup>2</sup> /kcmil)	$\Delta T$ 30° C (A)	$\Delta T$ 40° C (A)	$\Delta T$ 45° C (A)	$\Delta T$ 50° C (A)	$\Delta T$ 55° C (A)	$\Delta T$ 60° C (A)	$\Delta T$ 70° C (A)	2 Bar Current Coefficient
120/236.82	325	376	398	420	441	460	497	1.6
185/365.10	407	470	499	526	552	576	622	1.6
240/473.65	488	563	598	630	661	690	745	1.6

## DIAGRAMS



## VARNING

nVent produkter ska installeras och användas endast så som anges i nVents bruksanvisning och utbildningsmaterial. Bruksanvisningar är tillgängliga på [www.nvent.com](http://www.nvent.com) och från din nVent kundtjänstrepresentant. Felaktig installation, missbruk, felapplicering eller annan brist i att helt följa nVents instruktioner och varningar kan orsaka att produkten brister, egendomsskador, allvarliga kroppsskador och dödsfall och/eller ogiltigförklara din garanti.



Vårt starka utbud av varumärken:

**CADDY   ERICO   HOFFMAN   ILSCO   SCHROFF   TRACHTE**