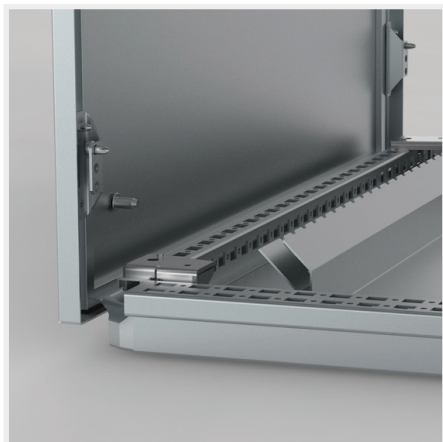


CBPE

EMC connection bottom plate



Description: Replaces two parts of the standard three or four piece bottom plates. Due to the hammer head cones, EMI cables can be directly earthed to the bottom plate keeping the "Faraday cage".

Material: 1,5 mm zinc plated steel.

Pack quantity: 2 pieces with EMI gasket and mounting accessories.

W	D	Item no.
600	600	CBPE0606
600	800	CBPE0608
800	600	CBPE0806
800	800	CBPE0808