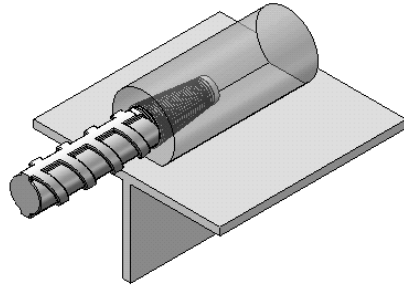


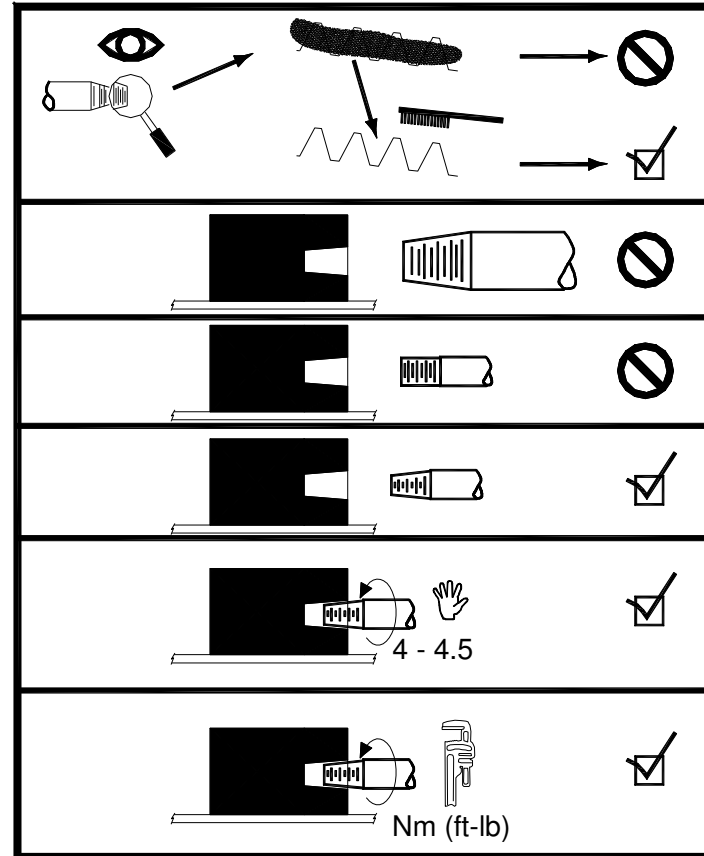
LENTON® COUPLER SPECIAL SIDE WELD




ERICO® recommends a qualified engineer review all weld joint design data requirements including selection of weld filler material and procedures per logical guidelines and recommendations.

Remove plastic protector cap prior to welding. Cap may be replaced after the material has cooled to 100°F (38°C) or less.

ELXXC2SWX, ELXXC3SWX



 					
in.-lb.	(Metric)	Soft Metric	(Canada)	Nm	ft.-lb.
#3	(10mm)	---	---	40	30
#4	(12mm)	13	(10M)	40	30
---	(14mm)	---	---	80	60
#5	(16mm)	16	(15M)	120	90
---	(18mm)	---	---	150	110
#6	(20mm)	19	(20M)	180	130
#7	(22mm)	22	---	220	160
---	(24mm)	---	---	270	200
#8	(25mm)	25	(25M)	270	200
---	(26mm)	---	---	270	200
#9	(28mm)	29	(30M)	270	200
---	(30mm)	---	---	300	200
#10	(32mm)	32	---	300	200
---	(34mm)	---	---	300	200
#11	(36mm)	36	(35M)	300	200
#12	(38mm)	---	---	350	200*
---	(40mm)	---	---	350	200*
#14	(43mm)	43	(45M)	350	200*
---	(50mm)	---	---	350	200*
#18	(57mm)	---	(55M)	350	200*

* Americas Only

- WARNINGS:
1. ERICO products shall be installed and used only as indicated in ERICO product instruction sheets and training materials. Instruction sheets are available at www.erico.com and from your ERICO customer service representative.
 2. ERICO products must never be used for a purpose other than the purpose for which they were designed or in a manner that exceeds specified load ratings.
 3. All instructions must be completely followed to ensure proper and safe installation and performance.
 4. Improper installation, misuse, misapplication or other failure to completely follow ERICO's instructions and warnings may cause product malfunction, property damage, serious bodily injury and death.

- The customer is responsible for:
- a. Conformance to all governing codes.
 - b. The integrity of structures to which the products are attached, including their capability of safely accepting the loads imposed, as evaluated by a qualified engineer.
 - c. Using appropriate industry standard hardware as noted above.

SAFETY INSTRUCTIONS: All governing codes and regulations and those required by the job site must be observed. Always use appropriate safety equipment such as eye protection, hard hat, and gloves as appropriate to the application.

CADDY, CADWELD, CRITEC, ERICO, ERIFLEX, ERITECH and LENTON are registered trademarks of ERICO International Corporation



TECHNICAL SUPPORT:
www.erico.com

