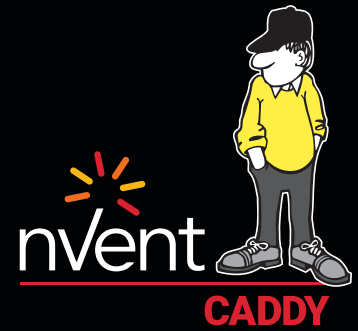
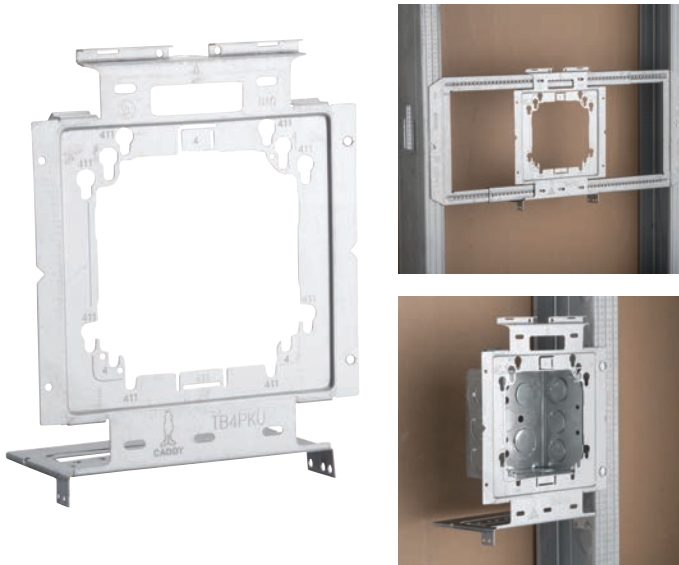


# Center Plate for Heavy Duty Telescoping Bracket



CONNECT AND PROTECT



## FEATURES

- Keyhole pattern designed to accommodate both mounting screw orientations for 4-11/16" boxes
- 4-11/16" boxes can be rotated for top, bottom and side knockouts without moving box mounting screws
- Easily snaps on to the nVent CADDY Heavy Duty Telescoping Bracket for between-stud mounting
- Innovative box lock tab secures box to bracket during assembly and allows mud ring to be removed following installation on the stud, providing easy frontal access to the inside of the box
- Innovative far side support allows bracket to be installed on virtually any stud depth and up to 3" wide studs
- Includes holes for mounting mud rings without an electrical box for low voltage applications
- Adjustable mud rings mount in vertical or horizontal orientation
- Bracket, plate and box can be preassembled to save time on the jobsite
- Can also be mounted directly to metal or wood studs
- Ideal for pre-fab assemblies



Material: Steel  
Finish: Pregalvanized

Part Number	Box Size	Certifications	Standard Packaging Quantity
TB4PKU	4", 4 11/16"	UL	25 pc



Our powerful portfolio of brands:

**CADDY ERICO HOFFMAN RAYCHEM SCHROFF TRACER**