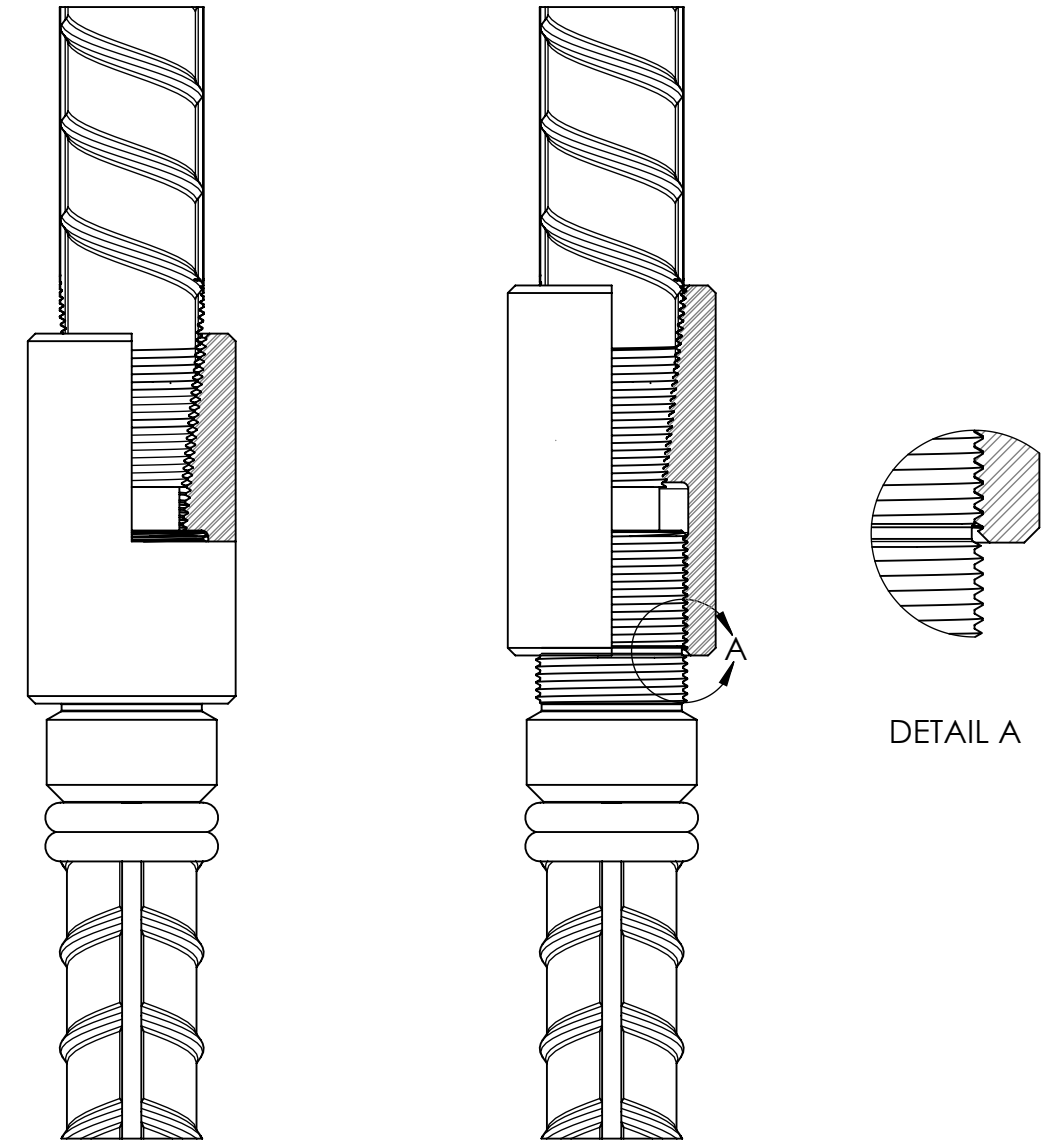


1. MAKE SURE ALL COUPLERS ARE SCREWED COMPLETELY ON THE STRAIGHT-THREADED STUD.
2. INSERT THE THREADED REBAR ENDS INTO THE COUPLER MOUTH AS FAR AS POSSIBLE.
3. ENGAGE THE TAPERED THREADS BY ROTATING THE COUPLER ONTO THE THREADED REBAR WHILE KEEPING THE REBAR STATIONARY.
4. ENSURE THAT THE LOCATING GROOVE IN THE THREAD OF THE MALE PART, SHOWN IN DETAIL A, IS NOT FULLY EXPOSED.



**PROPRIETARY AND CONFIDENTIAL**

THE INFORMATION CONTAINED IN THIS DRAWING IS THE SOLE PROPERTY OF nVent. ANY REPRODUCTION IN PART OR AS A WHOLE WITHOUT THE WRITTEN PERMISSION OF nVent IS PROHIBITED.

ALL DIMENSIONS AND TOLERANCES IN INCH [mm] UNLESS OTHERWISE SPECIFIED.

REVISIONS TO BE COMPUTER PROCESSED. NO MANUAL CHANGES PERMITTED.

© 2020 nVent All Rights Reserved

A	RELEASE	1016164	29APR20	HDE	AAV	RCS		
REV	DESCRIPTION	ESN #	DATE	DRN	CHK	APP	QA	MFG
TOLERANCE (INCH) UNLESS NOTED ANGULAR TOLERANCE: $\pm 1^\circ$ FRACTIONAL TOLERANCE: $\pm 1/32$ TWO PLACE DECIMAL: $\pm 0.01$ THREE PLACE DECIMAL: $\pm 0.005$					THIRD ANGLE PROJECTION 			
TOLERANCE [mm] UNLESS NOTED ANGULAR TOLERANCE: $\pm 1^\circ$ ONE PLACE DECIMAL: $\pm 0.3$ TWO PLACE DECIMAL: $\pm 0.13$		TITLE: SHEET REFERENCE LENTON ULTIMATE, PT04, MS04, POSITIONAL						
B	SIZE	SHT	1	OF	1	SCALE	NONE	DWG
						CRSLUMEP		REV A