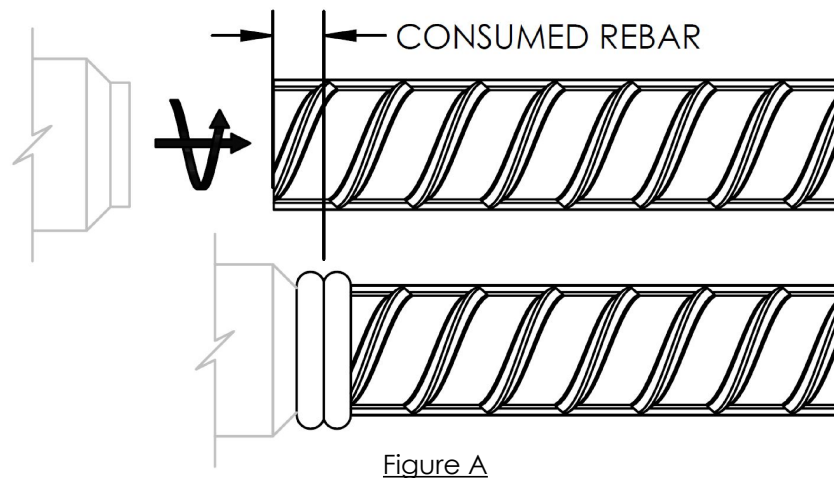


nVent LENTON[®] Ultimate Hybrid Detailer's Guide (Middle East)

NOTE

- A controlled amount of reinforcing steel and coupler material are consumed as part of the friction welding process.
- For this reason, the "B" dimensions in this document are in reference to the "as-welded" condition and will not match nominal "pre-welded" part lengths shown in other literature.
- The following sections show a "DETAILED LENGTH" reference point for the assembly and provide "DIFF" dimensions for calculation of respective "CUT LENGTHS" on the associated parts.



WARNING:

1. nVent products shall be installed and used only as indicated in nVent product instruction sheets and training materials. Instruction sheets are available at www.nVent.com and from your nVent customer service representative.
2. nVent products must never be used for a purpose other than the purpose for which they were designed or in a manner that exceeds specified load ratings.
3. All instructions must be completely followed to ensure proper and safe installation and performance.
4. Improper installation, misuse, misapplication or other failure to completely follow nVent's instructions and warnings may cause product malfunction, property damage, serious bodily injury and/or death, and void your warranty.

The customer is responsible for:

- a. Conformance to all governing codes.
- b. The integrity of structures to which the products are attached, including their capability of safely accepting the loads imposed, as evaluated by a qualified engineer.
- c. Using appropriate industry standard hardware as noted above.

SAFETY INSTRUCTIONS:

All governing codes and regulations and those required by the job site must be observed. Always use appropriate safety equipment such as eye protection, hard hat, and gloves as appropriate to the application.

nVent, CADDY, ERICO CADWELD, ERICO CRITEC, ERICO, ERIFLEX, and LENTON are registered trademarks of nVent or its global affiliates. All other trademarks are the property of their respective owners. nVent reserves the right to change specifications without prior notice.

nVent LENTON[®] Ultimate Hybrid Detailer's Guide (Middle East)

Table 1 - nVent LENTON Ultimate Parallel Threaded Male - MS04						
Bar Size	Part Number	"A" Hex	"A" Round	"B"	DIFF	Figure(s)
16 mm	LU16MS04	22.0 [0.88]	---	54 [2.1]	51 [2.0]	B
20 mm	LU20MS04	27.0 [1.06]	---	68 [2.7]	64 [2.5]	B
25 mm	LU25MS04	30.0 [1.19]	---	71 [2.8]	66 [2.6]	B
32 mm	LU32MS04	---	36.0 [1.50]	78 [3.1]	74 [2.9]	B
40 mm	LU40MS04	---	45.0 [1.75]	86 [3.4]	81 [3.2]	B

CL = DL - DIFF

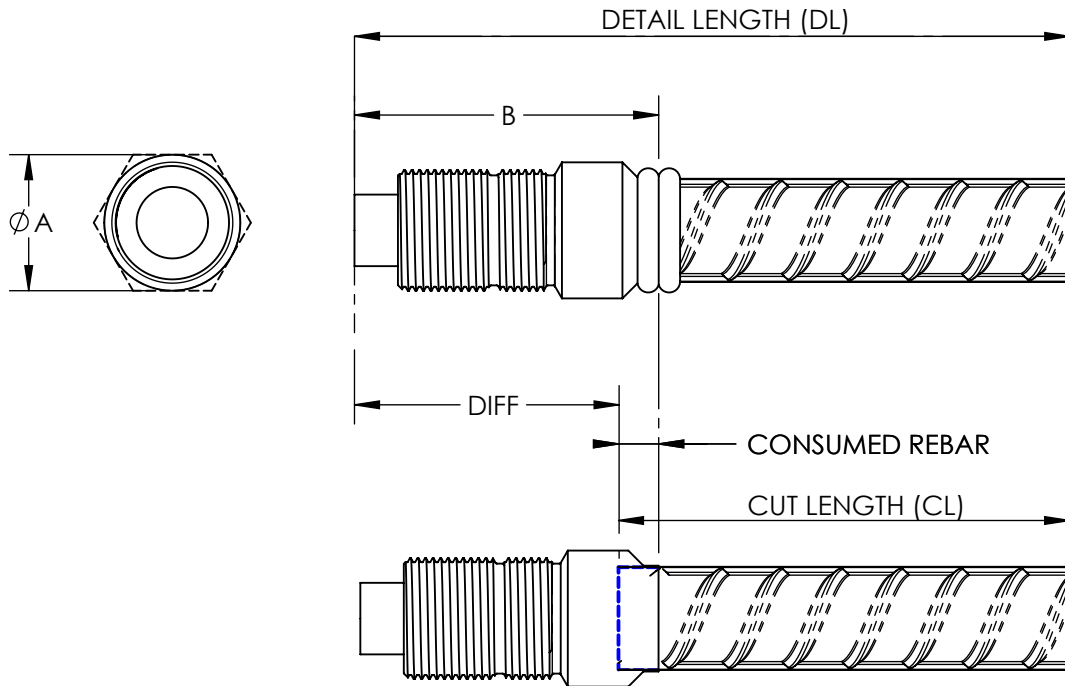


Figure B

A= Diameter or Hex Size
B= Length (Part)
L= Length (Assembly)

All dimensions in mm [inches]

nVent, CADDY, ERICO CADWELD, ERICO CRITEC, ERICO, ERIFLEX, and LENTON are registered trademarks of nVent or its global affiliates. All other trademarks are the property of their respective owners. nVent reserves the right to change specifications without prior notice.

nVent LENTON[®] Ultimate Hybrid Detailer's Guide (Middle East)

Table 2 - nVent LENTON Tapered Threads			
Bar Size	Part Number	BD Bar Depth	Figure(s)
16 mm	LENTON 16 mm Taper Thread	30 [1.2]	C
20 mm	LENTON 20 mm Taper Thread	42 [1.7]	C
25 mm	LENTON 25 mm Taper Thread	47 [1.8]	C
32 mm	LENTON 32 mm Taper Thread	52 [2.1]	C
40 mm	LENTON 40 mm Taper Thread	64 [2.5]	C
CL = DL			

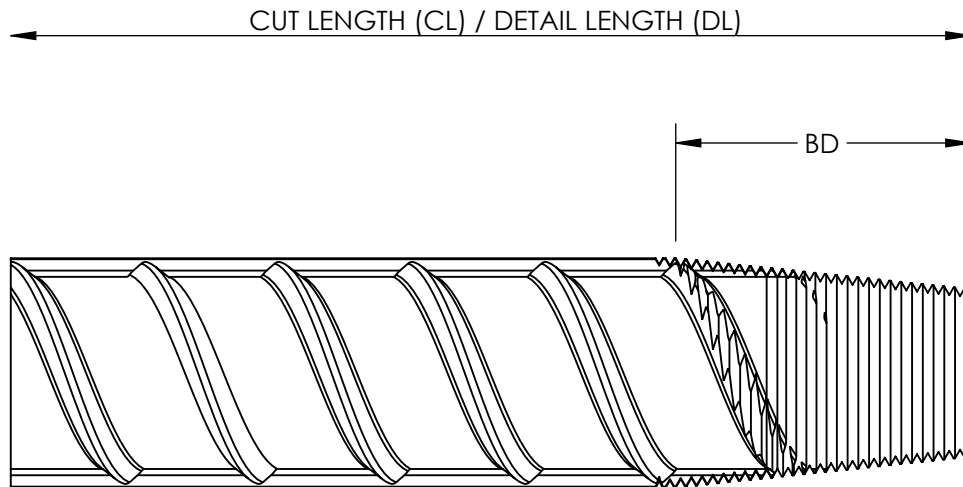


Figure C

A= Diameter or Hex Size
B= Length (Part)
L= Length (Assembly)

All dimensions in mm [inches]

nVent, CADDY, ERICO CADWELD, ERICO CRITEC, ERICO, ERIFLEX, and LENTON are registered trademarks of nVent or its global affiliates. All other trademarks are the property of their respective owners. nVent reserves the right to change specifications without prior notice.

nVent LENTON[®] Ultimate Hybrid Detailer's Guide (Middle East)

Table 3 - nVent LENTON Ultimate Coupler Assembly with Threaded Rebar - PT04, MS04 & LENTON Taper

Bar Size	Part			"A _{MAX} " Hex	"A _{MAX} " Round	"L _{MAX} "	Figure(s)
	Male-Taper	Male-Parallel	Coupler				
16 mm	LENTON 16 mm Taper Thread	LU16MS04	LU16PT04	27 [1.06]	---	74 [2.9]	D, E
20 mm	LENTON 20 mm Taper Thread	LU20MS04	LU20PT04	---	36 [1.38]	91 [3.6]	D, E
25 mm	LENTON 25 mm Taper Thread	LU25MS04	LU25PT04	---	40 [1.50]	102 [4.0]	D, E
32 mm	LENTON 32 mm Taper Thread	LU32MS04	LU32PT04	---	50 [2.00]	114 [4.5]	D, E
40 mm	LENTON 40 mm Taper Thread	LU40MS04	LU40PT04	---	60 [2.38]	132 [5.2]	D, E

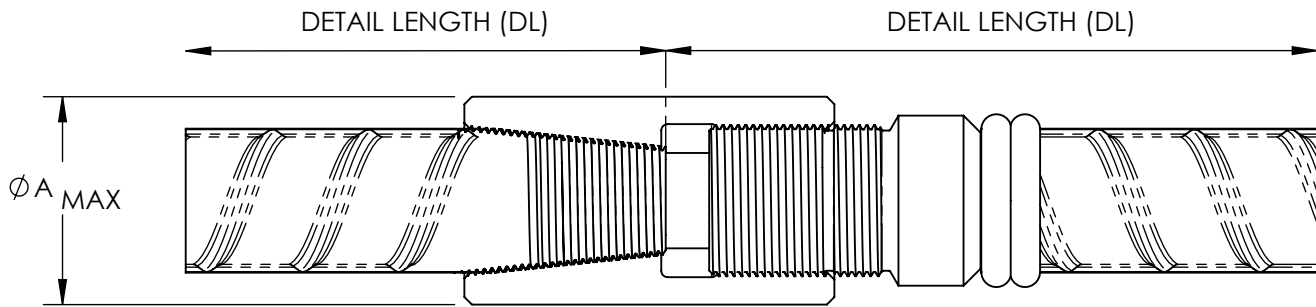


Figure D

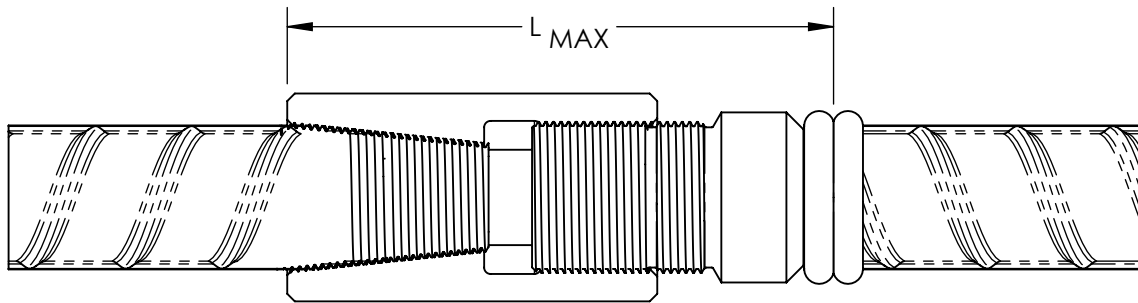


Figure E

A= Diameter or Hex Size
B= Length (Part)
L= Length (Assembly)

All dimensions in mm [inches]

nVent, CADDY, ERICO CADWELD, ERICO CRITEC, ERICO, ERIFLEX, and LENTON are registered trademarks of nVent or its global affiliates. All other trademarks are the property of their respective owners. nVent reserves the right to change specifications without prior notice.