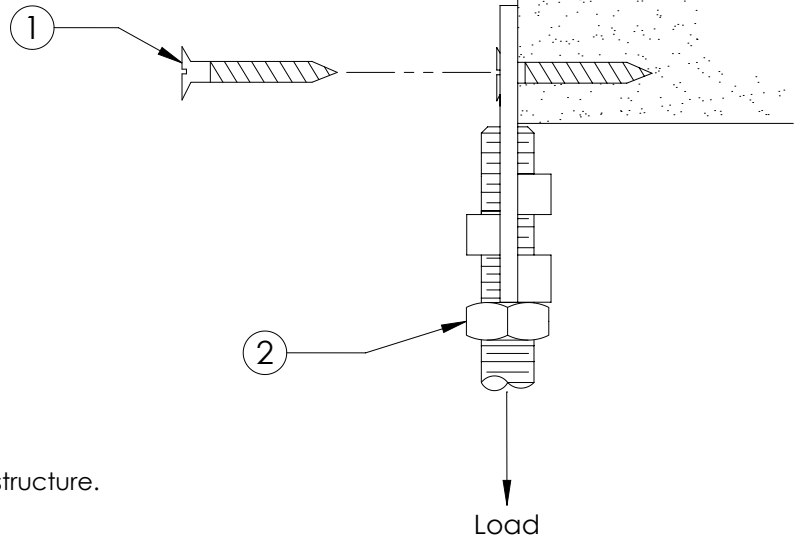
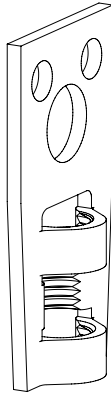


Eye Socket 037 Series



A structural attachment used to join hanger rod to a structure.

Built-in threads provide easy installation of rod.

Also available with 10mm & 12mm thread.

1/2" and M12 are FM Approved with concrete and steel only.

1. Screw the hanger directly to the structure.
2. Thread rod completely into hanger.
Then secure with lock nut.

Recommended Fasteners:

Part No.	Description	Hanger-Threaded Rod Supports Following Pipe Dia.	Rod Size	Max. Recom. Loads lbs.
0370037EG	Threaded Rod Hanger	3/4" through 4"	3/8"	250
0370050EG	Threaded Rod Hanger	2-1/2" through 6"	1/2"	760
037M0037EG	Threaded Rod Hanger	M10 - 1.50 6H	M10	250
037M0050EG	Threaded Rod Hanger	M12 - 1.75 6H	M12	760

3. Fasteners for 3/8" Rod Size:
 - A. Through 2" pipe, two Model #43, #14 x 2" Wood Drive Screws.
 - B. Through 4" pipe, one Model #42, 1/2" x 3" Lag Screw.
4. Fastener for 1/2" Rod Size:
 - A. Through 8" pipe, one Model #42, 5/8" x 3" Lag Screw.

WARNING:

1. nVent products shall be installed and used only as indicated in nVent product instruction sheets and training materials. Instruction sheets are available at www.nVent.com and from your nVent customer service representative.
2. nVent products must never be used for a purpose other than the purpose for which they were designed or in a manner that exceeds specified load ratings.
3. All instructions must be completely followed to ensure proper and safe installation and performance.
4. Improper installation, misuse, misapplication or other failure to completely follow nVent's instructions and warnings may cause product malfunction, property damage, serious bodily injury and/or death, and void your warranty.
5. Products that are manufactured using spring steel components shall be used only in a non-corrosive indoor environment.
6. All pipe supports, hangers, intermediate components and structural attachments must ONLY be used as described herein and are NEVER to be used for any other purpose.

NOTE: All load ratings are for static conditions and do not account for dynamic loading such as wind, water or seismic loads, unless otherwise noted.

The customer is responsible for:

- a. Conformance to all governing codes.
- b. The integrity of structures to which the products are attached, including their capability of safely accepting the loads imposed, as evaluated by a qualified engineer.
- c. Using appropriate industry standard hardware as noted above.

SAFETY INSTRUCTIONS:

All governing codes and regulations and those required by the job site must be observed. Always use appropriate safety equipment such as eye protection, hard hat, and gloves as appropriate to the application.

nVent, nVent CADDY, nVent ERICO Cadweld, nVent ERICO Critec, nVent ERICO, nVent ERIFLEX, and nVent LENTON are owned by nVent or its global affiliates. All other trademarks are the property of their respective owners. nVent reserves the right to change specifications without prior notice.

TECHNICAL SUPPORT:
www.nVent.com

CFS286_H

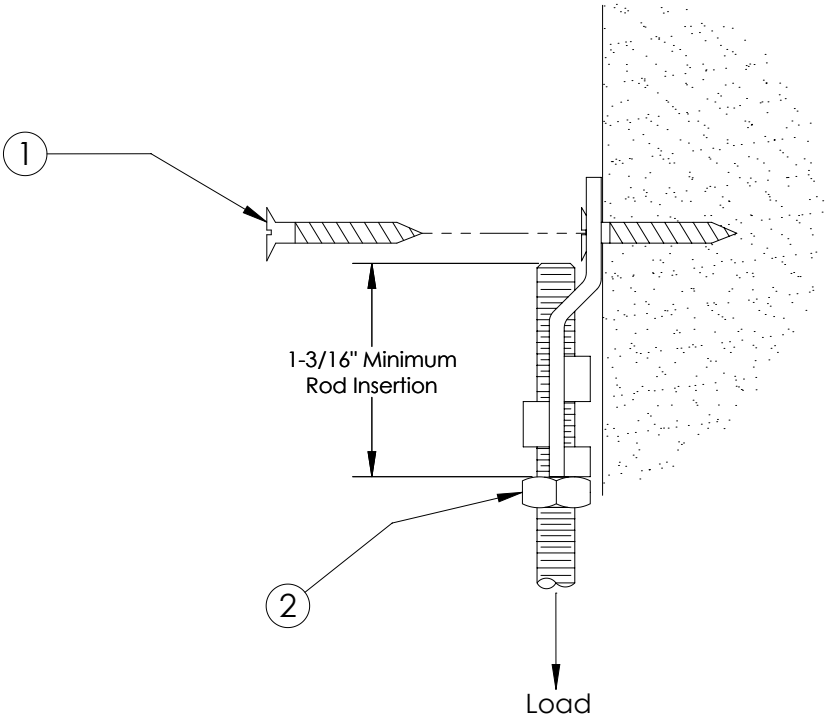
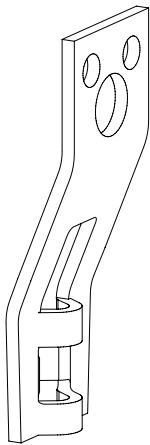
1 OF 2

© 2000-2018 nVent All Rights Reserved



Offset Eye Socket

038 Series



A structural attachment used to join hanger rod to a structure.

Built-in threads provide easy installation of rod.

Provides unlimited vertical rod adjustment.

Also available with 10mm thread.

- 1. Screw the hanger directly to the structure.
- 2. Thread rod into hanger to minimum rod insertion. Adjust to desired height, then secure with lock nut.

Recommended Fasteners:

- 3. Fasteners for 3/8" Rod Size:
 - A. Through 2" pipe, two Model #43, #14 x 2" Wood Drive Screws.
 - B. Through 4" pipe, one Model #42, 1/2" x 3" Lag Screw.

Part No.	Description	Hanger-Threaded Rod Supports Following Pipe Dia.	Rod Size	Max. Recom. Loads lbs.
0380037EG	Threaded Rod Hanger	3/4" through 4"	3/8"	250



nVent, nVent CADDY, nVent ERICO Cadweld, nVent ERICO Critec, nVent ERICO, nVent ERIFLEX, and nVent LENTON are owned by nVent or its global affiliates. All other trademarks are the property of their respective owners. nVent reserves the right to change specifications without prior notice.

TECHNICAL SUPPORT:
www.nVent.com

CFS286 H

2 OF 2

© 2000-2018 nVent All Rights Reserved

