

# nVent LENTON Standard Couplers (A22)



## CONNECT AND PROTECT



### FEATURES

- High strength, for use with ASTM A615 and A706 Grade 100 reinforcing steel
- Designed to splice the same diameter bars where one bar can be rotated and the bar is not restricted in its axial direction
- Taper thread design eliminates cross threading
- The taper threading on the bar is the same for all nVent LENTON taper coupler families
- Slim design reduces concrete cover
- Installs quickly and easily

The nVent LENTON A22 coupler was engineered to address the building requirements for ASTM A615 and A706 grade 100 (700 MPa) reinforcing steel. The A22 family of standard couplers was specifically designed for use in applications that require a high strength mechanical coupler. The performance of the spliced connection is designed to meet the bars' specified ultimate tensile strength. Product is produced from 100% U.S. Domestic Steel and currently available from #7 through #18 (22 mm through 57 mm). Other coupler sizes are available upon request.

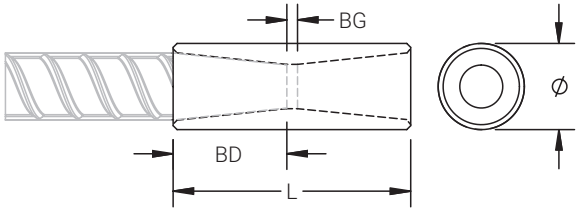
nVent LENTON Standard Couplers are typically specified to provide continuity and structural integrity in reinforced concrete structures. The couplers are machined to have taper threads at both ends, creating a mechanical butt splice of two sections of reinforcing steel. nVent LENTON standard couplers are designed to splice the same diameter bars when at least one bar is free to rotate. They are one of the slimmest couplers available and the tapered thread makes them one of the most reliable, easy-to-install and cost-effective systems on the market.

### TYPICAL APPLICATIONS

**Column bar, beam bar, shear wall and core wall splicing:** creates a continuous length of bar

**Segmental pours:** positioned within the form of the first pour to allow fastening prior to the second pour

Part Number	Rebar Size			Diameter Ø	Length L	Bar Depth BD	Bar Gap BG	Unit Weight
	Metric	US	Canada					
EL22A22	22 mm	#7	—	1.25"	3.60"	1.46"	0.68"	0.8 lb
EL25A22	25 mm	#8	—	1.50"	3.80"	1.57"	0.66"	1.2 lb
EL28A22	28 mm	#9	30M	1.75"	3.97"	1.65"	0.67"	1.8 lb
EL32A22	32 mm	#10	—	1.88"	4.23"	1.78"	0.67"	2.1 lb
EL36A22	36 mm	#11	35M	2.25"	4.76"	2.04"	0.68"	3.6 lb
EL43TA22	43 mm	#14	45M	2.50"	6.22"	2.60"	1.02"	5.4 lb
EL57TA22	57 mm	#18	55M	3.25"	7.57"	3.28"	1.01"	10.8 lb



Our powerful portfolio of brands:

CADDY

ERICO

HOFFMAN

ILSCO

RAYCHEM

SCHROFF