

# Series 263HC Card-Lok

Meets **VITA** 46, 48.2, 48.4  
In alignment with the  
**SOSA**® Technical Standard



## RECOMMENDED GAP WIDTH

PCB + 8.25 mm (.325 in)

## RECOMMENDED TORQUE

68 N-cm (6 in-lbs) With "L" option 90 N-cm (8 in-lbs)

## WEIGHT

1.07 g/cm (.096 oz/in)

## MATERIALS AND FINISH

### Bodies and Wedges

- **Material:** Aluminum Alloy 6061-T6 per ASTM-B221 or AMS-QQ-A-200/8
- **Finish:** See finish table on opposite page

### Shaft

- **Material:** Aluminum alloy 7075-T6 per ASTM-B221 or AMS-QQ-A-200/11
- **Finish:** See finish table on opposite page

### Screw

.09 in. or 2.5 mm hex. socket head

- **Material:** 300 series stainless steel with dry film lube per MIL-L-46010

### Rollpins and Flat Washer

- **Material:** 400 series stainless steel
- **Finish:** Passivated per AMS2700

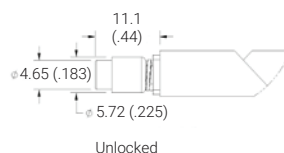
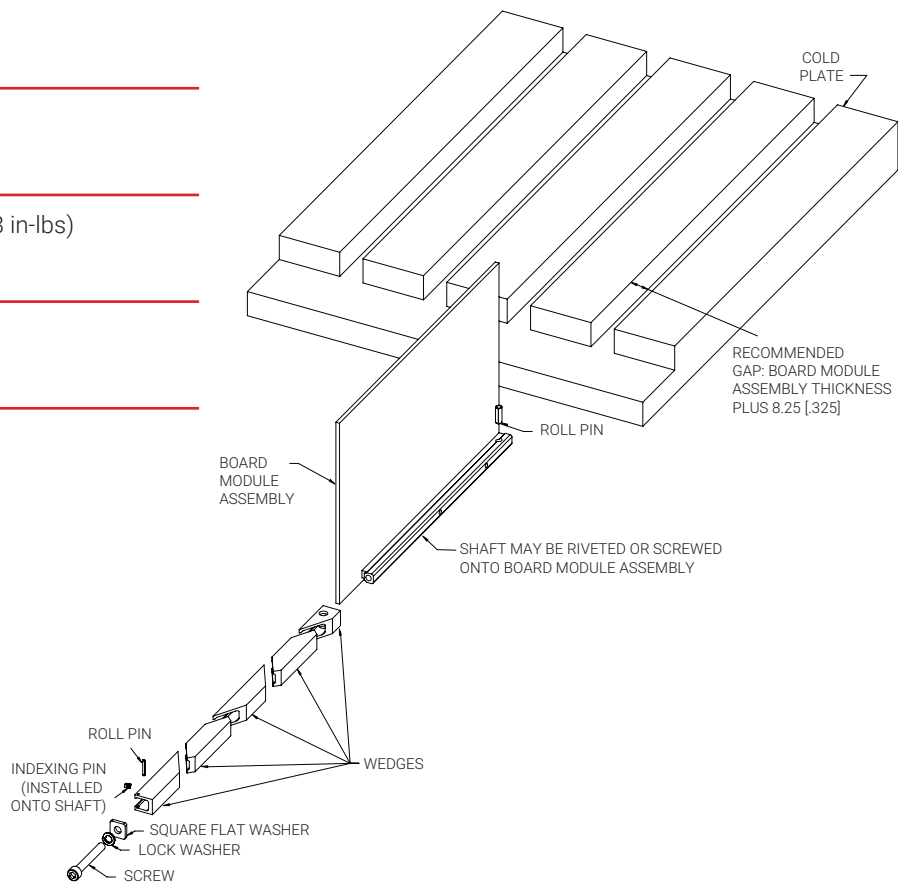
### Lock Washer

- **Material:** MS35338-135
- **Finish:** Passivated per AMS2700

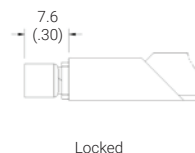
### Indexing Pins

- **Material:** Aluminum alloy 6061-T6
- **Finish:** See finish table on opposite page

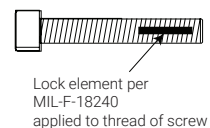
SOSA is a registered trademark of The Open Group



Unlocked



Locked



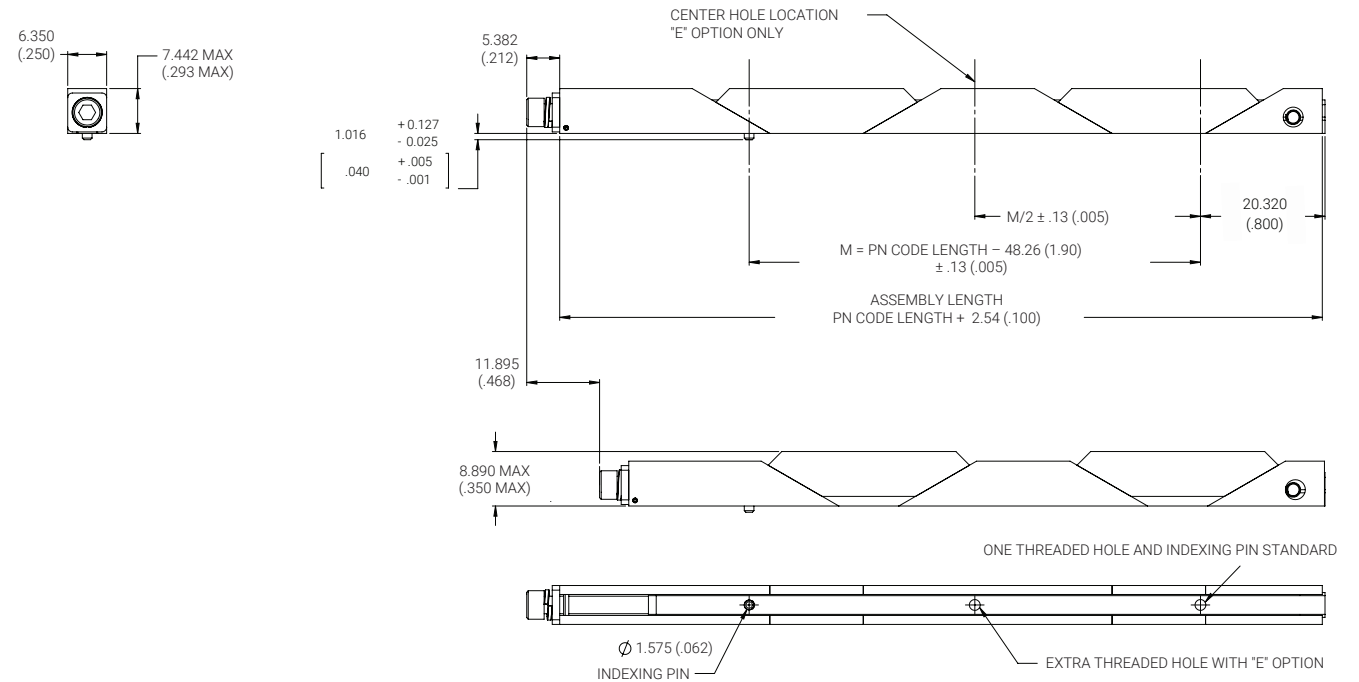
Lock element per MIL-F-18240 applied to thread of screw

### Detail "V"

Provides visual lock indication.

### Detail "L"

Provides prevailing torque for resistance to loosening from shock and vibration. Adds 22 N-cm (2 in-lbs) torque to assembly.



**Part Number Code**  
**Series 263HC Card-Lok Five Piece**

**Prefix options**  
Metric Screw Head 2.5 mm Hex Drive M  
Standard Screw Head 3/32 \_\_\_\_\_  
Hex Drive \_\_\_\_\_ [blank]  
Visual Indicator \_\_\_\_\_ V  
No Visual Indicator \_\_\_\_\_ [blank]  
Black Anodize \_\_\_\_\_ A  
or choose from Finish Table \_\_\_\_\_ see table

**Suffix options**  
Length in 12.7 (.50) increments \_\_\_\_\_ 96.52 (3.80)  
\_\_\_\_\_ to 172.72 (6.80)  
Additional Center Mounting Hole \_\_\_\_\_ E  
None \_\_\_\_\_ [blank]  
Mounting Options - holes for rivet mounting \_\_\_\_\_ H  
or choose from Mounting Option Table \_\_\_\_\_ see table  
Lock Element \_\_\_\_\_ L  
None \_\_\_\_\_ [blank]

**Part Number Code Example:**

**MVA263HC-3.80ET2L**

Series 263HC Card-Lok five piece 96.52 (3.80) long black anodized with 2.5 mm hex drive, visual indicator, mounting holes tapped for 2-56 thread, with locking element.

**Finish Table**

Code letter	Finish
"A"	BLACK ANODIZE PER MIL-A-8625 TYPE II, CLASS 2
"HA"	HARD BLACK ANODIZE PER MIL-A-8625 TYPE III, CLASS 2
"EN"	ELECTROLESS NICKEL PER MIL-C-26074 CLASS 4, GRADE B, BRIGHT

**Mounting Method Table**

Code letter	Method
"H"	Ø 1.73/1.85 (.068/.073) DIA. THROUGH HOLES COUNTERSINK 100° X 1.50 (.060) DEEP
"T0"	0-80 TAPPED HOLE
"T2"	2-56 TAPPED HOLE
"TM2"	M2 x 0.40 TAPPED HOLE
"TM2.5"	M2.5 x 0.45 tapped hole

**nVent SCHROFF, Inc.**

7328 Trade Street San Diego,  
CA 92121 USA  
+1 800-525-4682

**CALMARK™**



Our powerful portfolio of brands:

**CADDY ERICO HOFFMAN ILSCO SCHROFF TRACHTE**