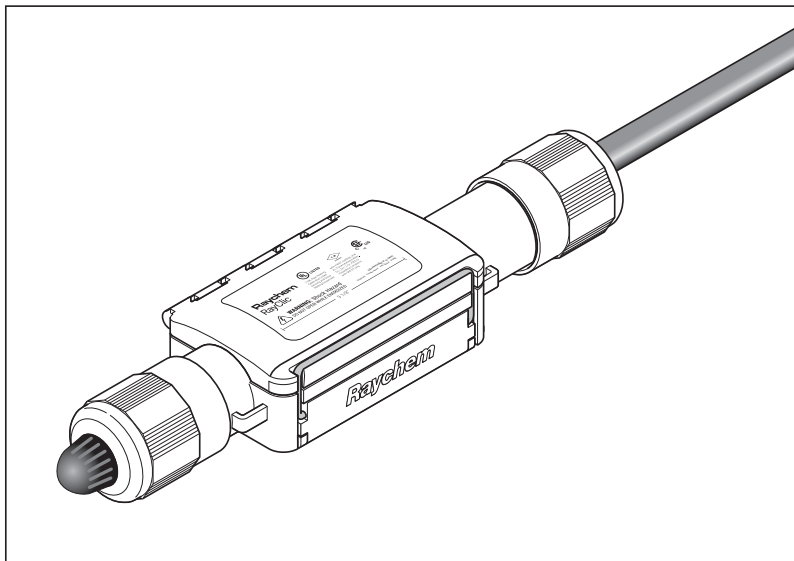
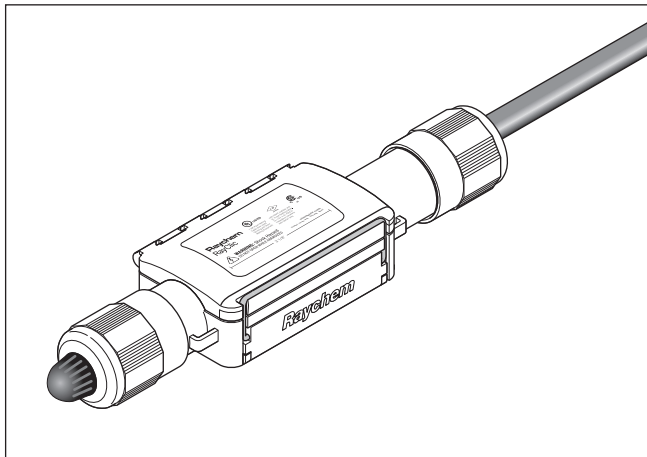




RayClic Connection System

RayClic-LE Lighted End Seal Kit Installation Instructions





APPROVALS



718K Pipe Heating Cable

877Z De-Icing and Snow Melting

Not UL Listed with XL-Trace Edge heating cable for buried piping



For IceStop (GM-XT) only
Class I, Div. 2, Groups A, B, C, D

TOOLS REQUIRED

- Utility knife
- Wire cutters
- TORX® T20 screw driver

OPTIONAL ACCESSORIES (NOT INCLUDED IN THIS KIT):

- Raychem RayClic-SB-02 Wall mounting bracket

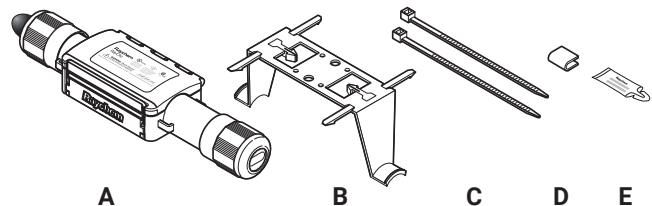
DESCRIPTION

The Raychem RayClic-LE Lighted End Seal Kit is for use with Raychem IceStop, XL-Trace Edge and HWAT heating cables. The connection is designed to be installed above the pipe insulation or mounted on the wall at the end of the heating cable circuit. These installation instructions should be used in conjunction with the IceStop, XL-Trace Edge and HWAT System Installation and Operation Manuals.

For technical support contact your Chemelex representative or call Chemelex (800) 545-6258.

KIT CONTENTS

Item	Qty	Description
A	1	Light end seal
B	1	Pipe mounting bracket
C	2	Plastic cable ties
D	1	Clip
E	1	Cable lubricant (for use with HWAT cables only)



⚠ WARNING:

This component is an electrical device that must be installed correctly to ensure proper operation and to prevent shock or fire. Read these important warnings and carefully follow all the installation instructions.

- To minimize the danger of fire from sustained electrical arcing if the heating cable is damaged or improperly installed, and to comply with the requirements

of Chemelex, agency certifications, and national electrical codes, ground fault equipment protection must be used. Arcing may not be stopped by conventional circuit breakers.

- Bus wires will short if they contact each other. Keep bus wires separated.
- Keep components and heating cable ends dry before and during installation.

- The black heating cable core is conductive and can short. It must be properly insulated and kept dry.
- Component approvals and performance are based on the use of Chemelex-specified parts only. Do not use substitute parts or vinyl electrical tape.
- Leave these instructions with end user for reference and future use.

⚠ AVERTISSEMENT :

Le câble chauffant électrique doit être installé correctement pour éviter les risques d'incendie ou de décharge électrique. Lisez attentivement les mises en garde suivantes et suivez les instructions d'installation.

- Pour réduire le danger d'incendie causé par un arc électrique continu, si le câble chauffant est endommagé ou mal installé, et pour être conforme avec Chemelex, les organismes de certification et les codes applicables, il est impératif d'utiliser une protection par disjoncteur différentiel. Un

disjoncteur ordinaire peut ne pas être assez sensible pour prévenir les arcs continus.

- Les fils omnibus peuvent être court-circuités s'ils se touchent. Tenez les fils omnibus éloignés les uns des autres
- Les composants et les terminaisons du câble chauffant doivent être tenus au sec avant et pendant l'installation.
- Le noyau du câble chauffant noir est conducteur et peut occasionner des courts-circuits. Il doit être correctement isolé et gardé à sec.

- Les homologations et les performances des composants sont basées sur l'utilisation de pièces spécifiées par Chemelex seulement. N'utilisez pas de pièces de rechange ou de ruban isolant en vinyle.
- Laissez ces instructions d'installation à l'utilisateur pour référence ultérieure.

If you experience difficulty during installation, refer to the "Troubleshooting Guide" on page 6.

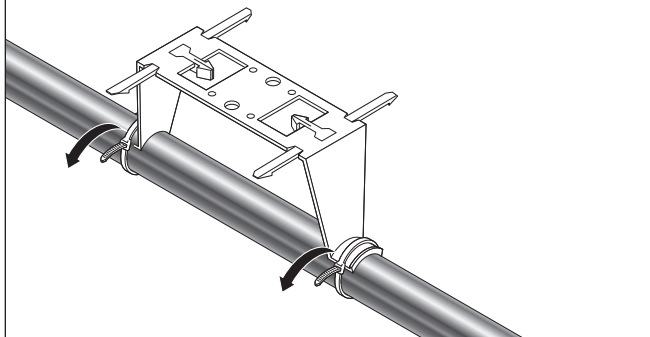
LIGHTED END SEAL INSTALLATION

1

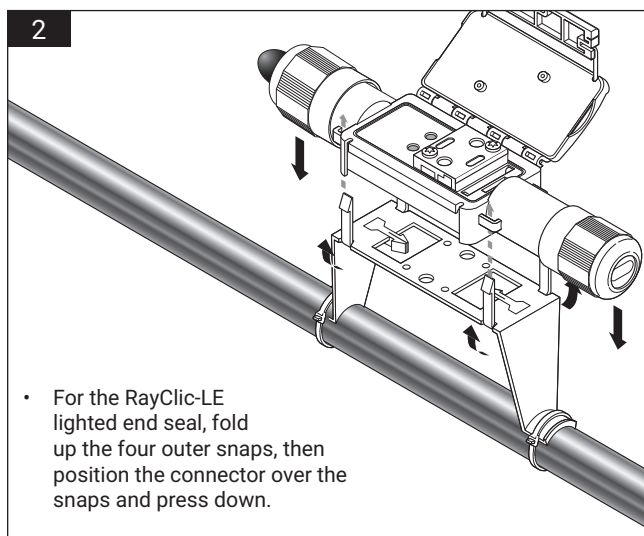
- Using the plastic cable ties, attach the bracket to the pipe.

Note: For roof-mounted applications, follow steps 3 through 9 (pages 3–5), then turn to "Roof Installation" on page 5.

Do not install the end seal where it can be immersed in water.

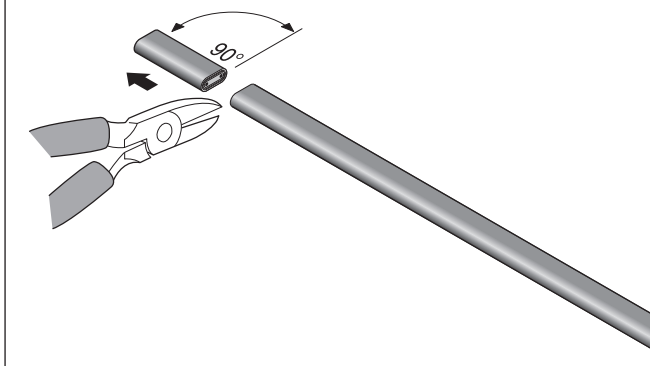


2

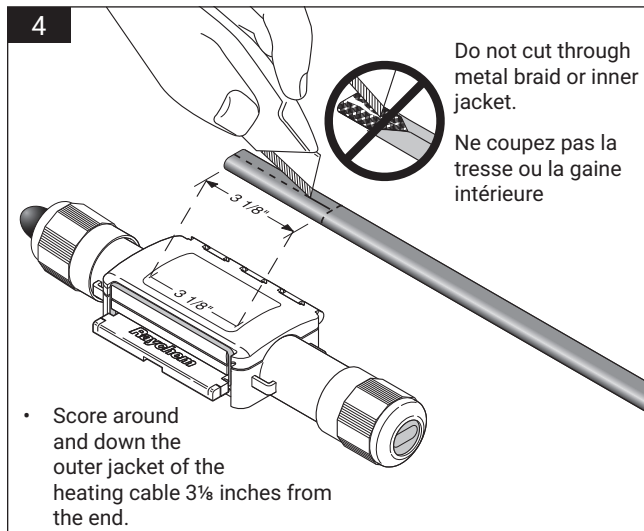


3

- Allow enough extra heating cable to make service loops as required.
- Make sure end of heating cable is cut clean.

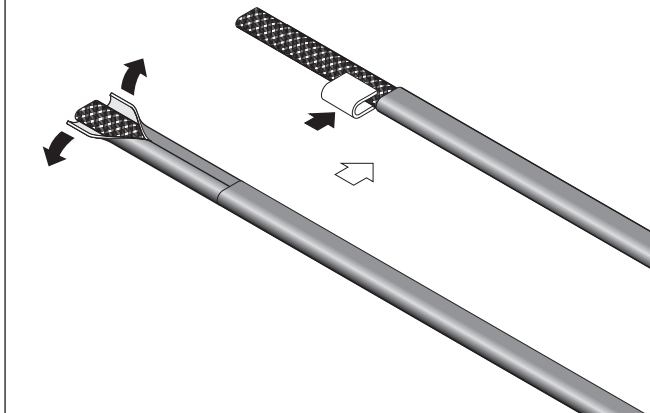


4



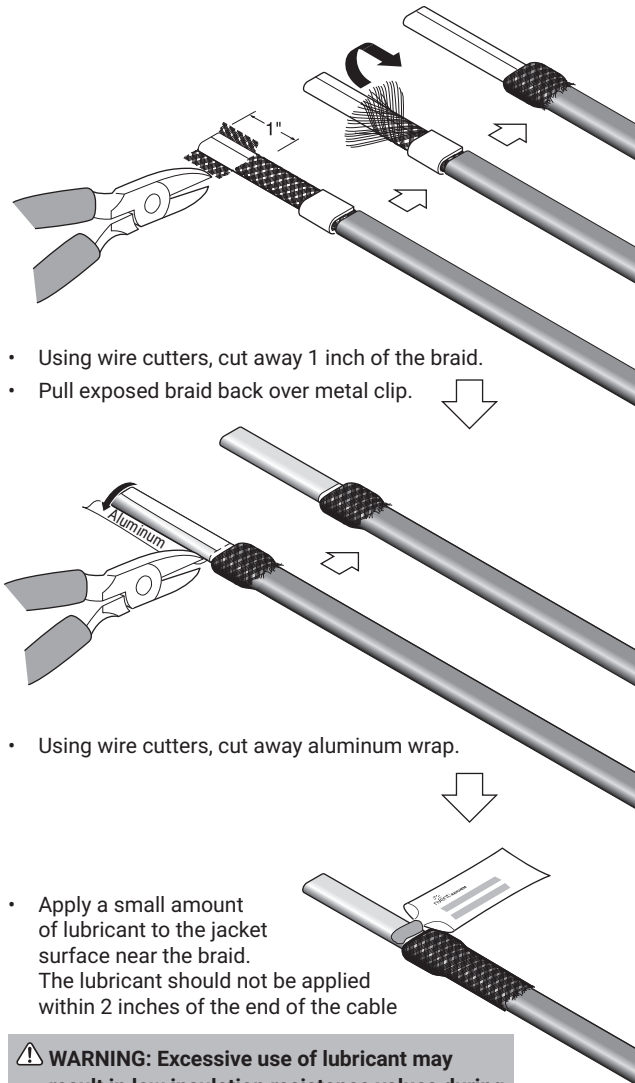
5

- Remove the outer jacket.
- Place metal clip over the base of exposed braid.



HWAT ONLY

6A

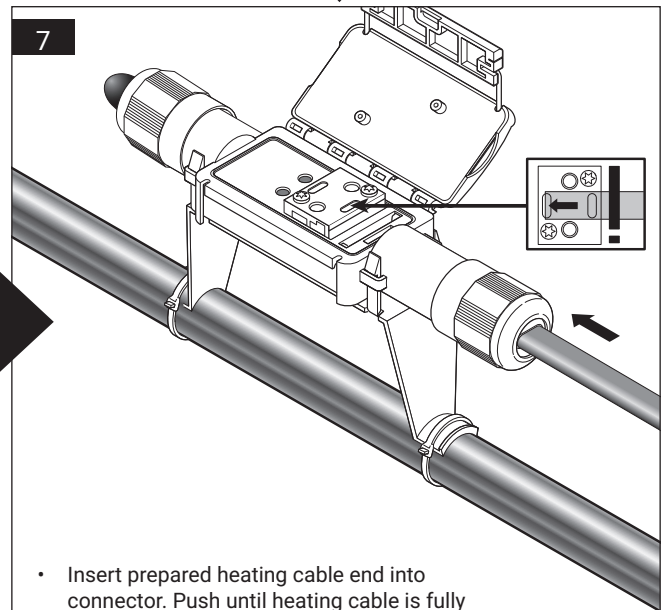
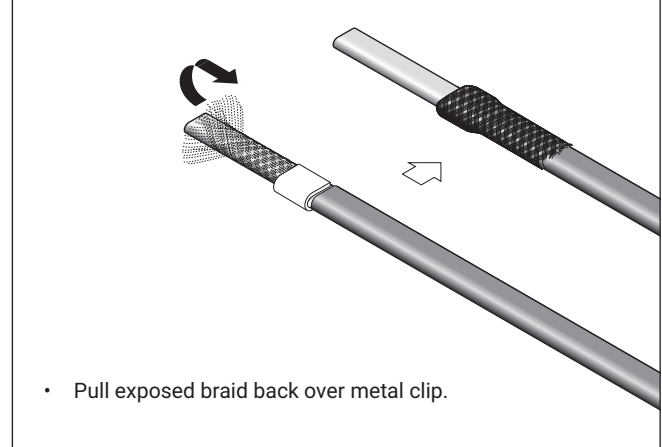


⚠ WARNING: Excessive use of lubricant may result in low insulation resistance values during testing or a short circuit across the bus wires.

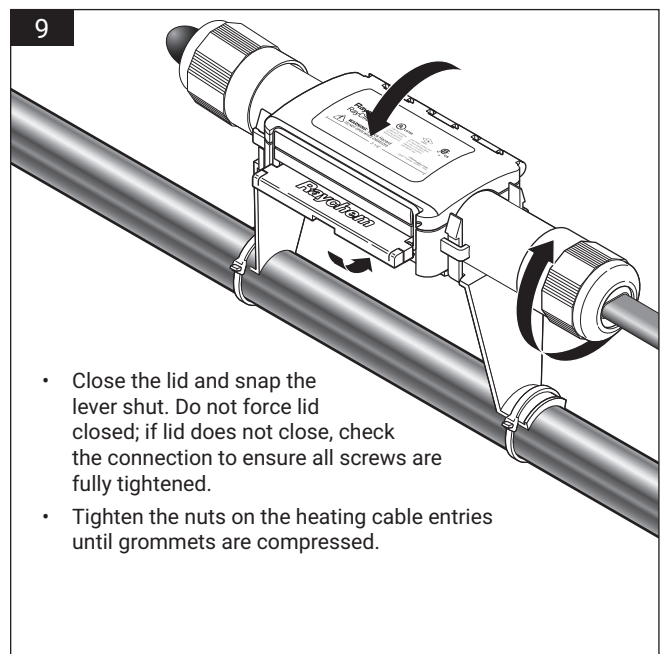
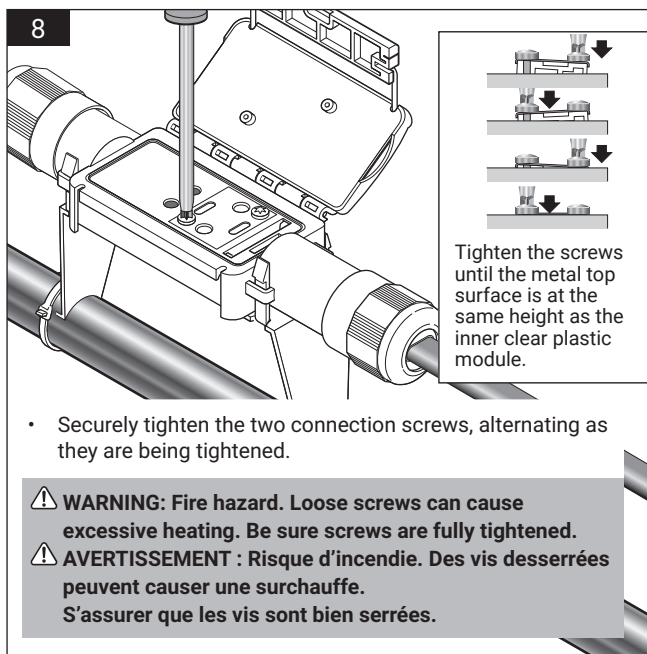
⚠ AVERTISSEMENT : L'utilisation excessive de lubrifiant peut entraîner de faibles valeurs de résistance d'isolement lors des essais ou un court-circuit entre les fils du bus.

ICESTOP AND XL-TRACE EDGE ONLY

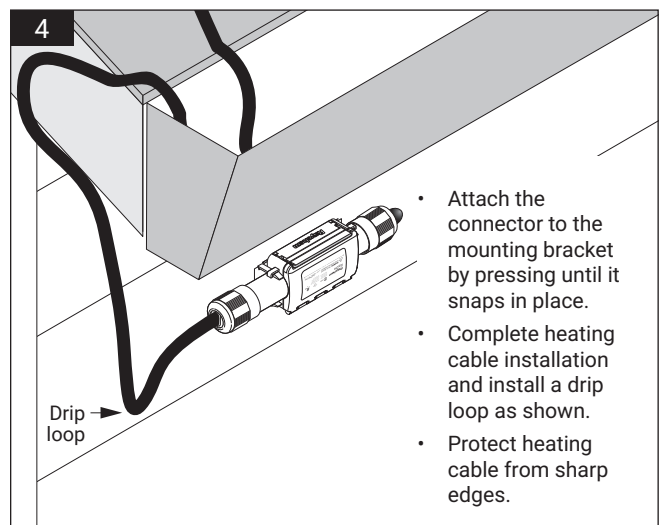
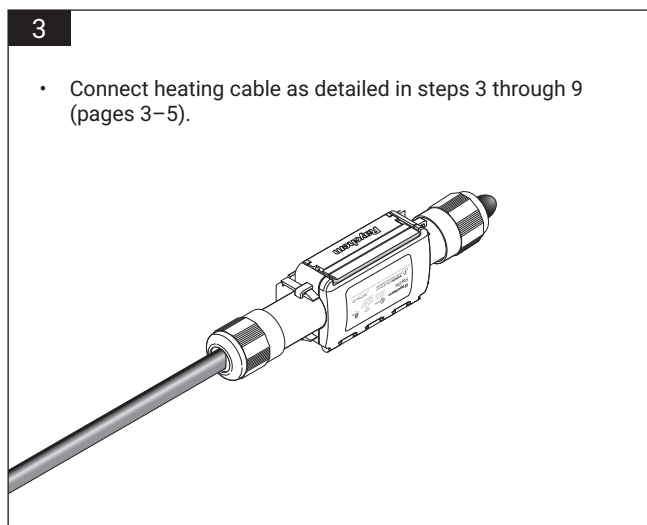
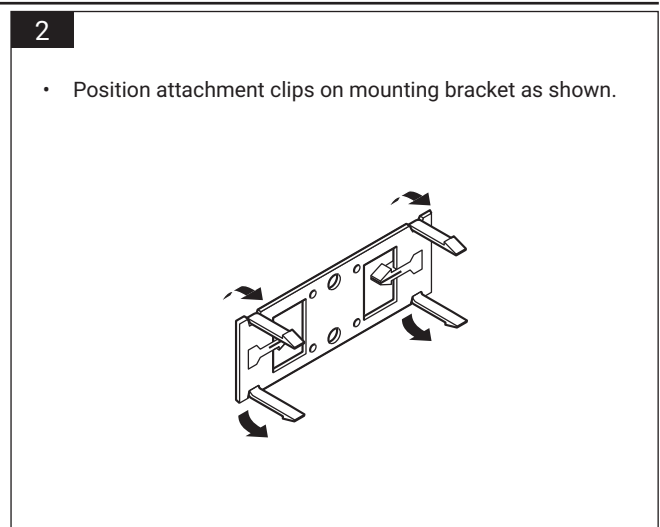
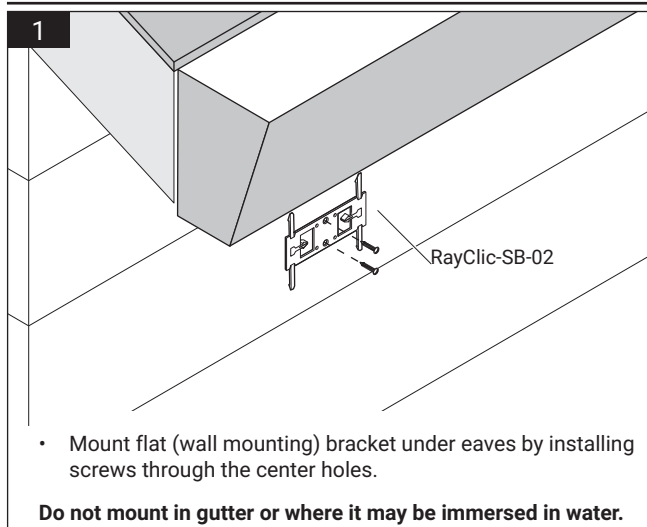
6B



Note: RayClic connection kits are designed to be installed only once; the heating cable cannot be removed once installed

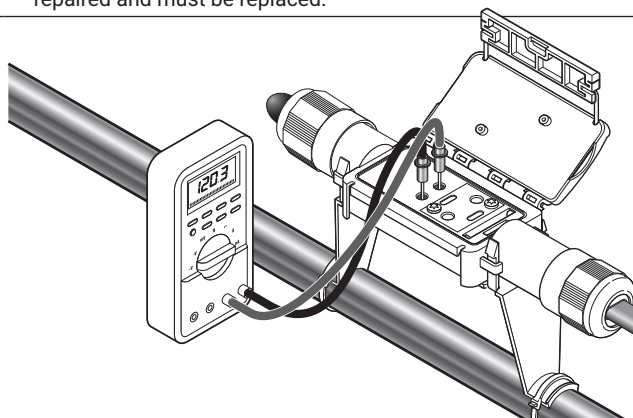


ROOF INSTALLATION



TROUBLESHOOTING GUIDE

Problem	Solution
Braid clips are missing.	The braid clips are attached to the cardboard packing insert under the lid. The braid clips must be used to ensure a ground connection. If clips are missing or lost, call Chemelex at (800) 545-6258.
Mounting bracket is missing.	A pipe mounting bracket is supplied with the Power Connection, Powered Splice, Powered Tee and Lighted End Seal kits. A wall mounting bracket or additional pipe mounting bracket may be ordered using one of the catalog numbers listed under "Optional Accessories" on the front page of these instructions when you place your order.
Connector does not snap onto bracket.	The bracket has two sets of attachment clips. Fold up the four outer clips for the Power Connection and Lighted End Seal kit. Fold up only the center clips for the Powered Splice and Powered Tee kits.
Heating cable type not mentioned.	Raychem RayClic connection kits are approved for use only with HWAT, XL-Trace Edge, and IceStop heating cables. Do not use with other heating cables.
Braid clip does not fit.	Be sure the clip is installed on the metal braid, not on the outer jacket.
Heating cable does not have aluminum wrap.	Only HWAT heating cables have the aluminum wrap under the braid. Skip the aluminum wrap removal step for XL-Trace Edge and IceStop heating cables.
Heating cable cannot be inserted into connector.	Check for the following: <ul style="list-style-type: none"> • Apply lubricant to heating cable primary (white) jacket. • Outer jacket strip length is 3$\frac{1}{8}$ inches. • Braid clip is installed on top of the metal braid, not on the outer jacket. • Braid is pulled back over braid clip. • For HWAT, 1 inch of braid is removed. • Sealing nut is loose (but not removed). • Connection screws are loose.
Lid does not close.	Be sure all screws are fully tightened before closing the lid.
Heating cable cannot be removed.	The power connection and end seal are designed to be installed only once; the heating cable cannot be removed once installed. Additional Raychem RayClic-E and RayClic-LE end seals can be ordered from Chemelex.
Light does not come on.	<ul style="list-style-type: none"> • Verify there is voltage present. • Verify the cable guide is screwed down completely. • If the light still does not function, the RayClic-LE cannot be repaired and must be replaced.





North America

Tel +1 800 545 6258
info@chemelex.com

Latin America

Tel +1 713 868 4800
info@chemelex.com

Europe, Middle East, Africa, India

Tel +32 16 213 511
Fax +32 16 213 604
info@chemelex.com

Asia Pacific

Tel +86 21 2412 1688
infoAPAC@chemelex.com

chemelex
excellence is everything

Raychem

Tracer

Pyrotenax

Nuheat