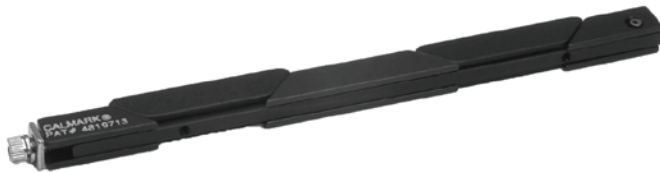


Series 263 Card-Lok

Meets **VITA** 46, 48.2, and 48.4
In alignment with the
SOSA® Technical Standard



RECOMMENDED GAP WIDTH

PCB + 8.25 mm (.325 in)

RECOMMENDED TORQUE

68 N-cm (6 in-lbs) With "L" option 90 N-cm (8 in-lbs)

WEIGHT

1.07 g/cm (.096 oz/in)

MATERIALS AND FINISH

Bodies, Wedges and Shaft

- **Material:** Aluminum Alloy 6061-T6 per ASTM-B221 or AMS-QQ-A-200/8
- **Finish:** See finish table on opposite page

Screw, Lock and Flat Washer

.09 in. or 2.5 mm hex. socket head cap screw, depending on mounting configuration

- **Material:** NAS1352C, Modified NAS1352C04 or 8-8 stainless steel
- **Finish:** Passivated per AMS2700

Lock Washer

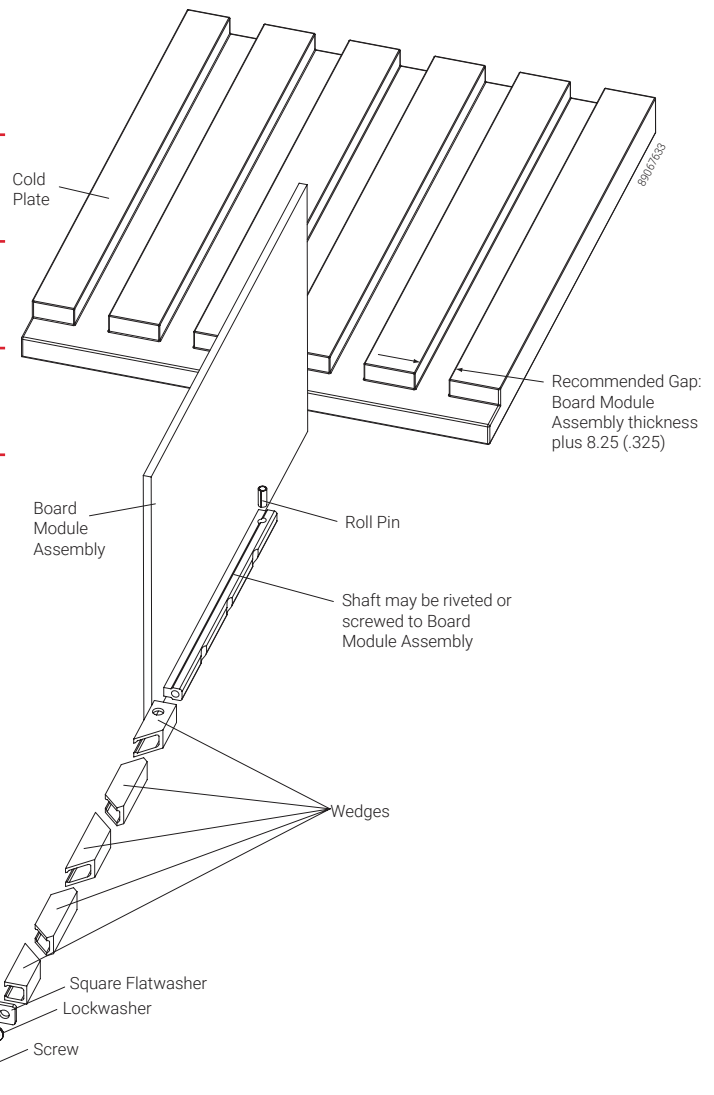
- **Material:** MS35338-135
- **Finish:** Passivated per AMS2700

Flat Washer

- **Material:** 300 series stainless steel
- **Finish:** Passivated per AMS2700

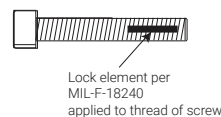
Roll Pin

- **Material:** 400 series stainless steel
- **Finish:** Passivated per AMS2700



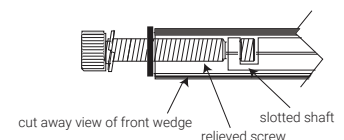
Detail "V"

Provides visual lock indication.



Detail "L"

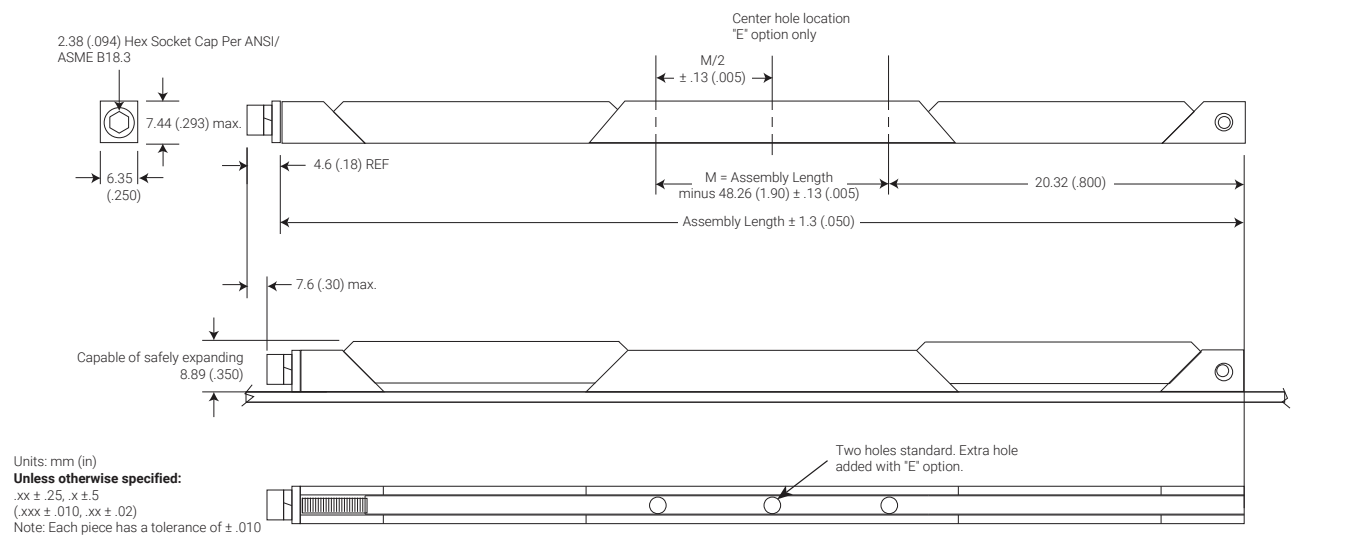
Provides prevailing torque for resistance to loosening from shock and vibration. Adds 22 N-cm (2 in-lbs) torque to assembly.



Detail "K"

Prevents the unintentional disassembly of screw from shaft.

SERIES 263 CARD-LOK



Part Number Code	M	V	A	263	-	2.80	E	H	L	K
Screw										
Metric Screw Head 2.5 mm Hex Drive							M			
Standard Screw Head 3/32 Hex Drive							[Blank]			
Type										
Torque Limiting Version*							TLC			
Standard version with Visual Indicator							V			
Standard version							[Blank]			
Finish										
Black Anodized							A			
or select code letter from Finish Table										
Length										
Length in 12.7 (.50) increments							71.12 [2.80]			
							to 325.12 [12.80]			
Mounting										
Additional Center Mounting Hole.								E		
None								[Blank]		
Mounting Options – through mounting holes.									H	
Or choose from Mounting Method Table										
Lock Patch										
Lock Patch									L	
None									[Blank]	
Captive Screw										K
None										[Blank]

Part Number Code Example:
TLC263-4.80TM2.5

Series 263 Card-Lok, with torque limiting option, gold chem film finish, 121.9 (4.80) long and M2.5 x 0.45 tapped holes for mounting.

Finish Table

Code Letter	Finish
[blank]	Chemical Film per Mil-DTL-5541 Class 3, Gold
"R"	Chemical Film per Mil-DTL-5541 Class 3, Type II, Clear
"A"	Black Anodize per Mil-A-8625 Type II, Class 2
"HA"	Hard Black Anodize per Mil-A-8625 Type III, Class 2
"EN"	Electroless Nickel per Mil-C-26074 Class 4, Grade B, Bright

Mounting Method Table

Code Letter	Method
"H"	Ø 1.73/1.85 (.068/.073) dia. through holes countersink 100° x 1.52 (.060) deep
"T0"	0–80 tapped hole
"T2"	2–56 tapped hole
"TM2"	M2 x 0.40 tapped hole
"TM2.5"	M2.5 x 0.45 tapped hole

NOTE: For torque limiting "tlc" version: the minimum length is 96.52 (3.80) the front mounting hole, nearest to the screw, will be replaced with an indexing pin visual indicator lock patch options not available must click 3+ times for proper installation

nVent SCHROFF, Inc.
7328 Trade Street San Diego,
CA 92121 USA
+1 800-525-4682

CALMARK™



Our powerful portfolio of brands:
CADDY ERICO HOFFMAN ILSCO SCHROFF TRACHTE