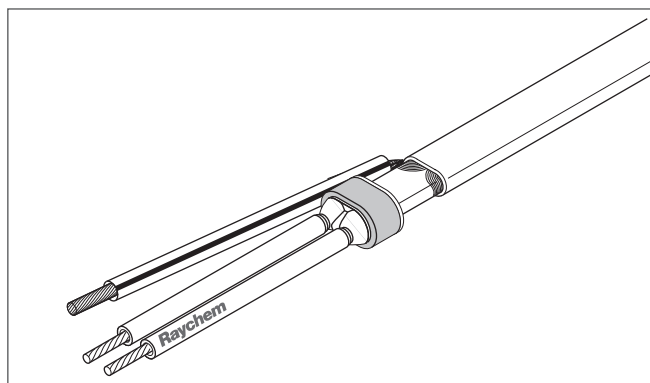


CS-100

Heating Cable Core Sealer Installation Instructions



APPROVALS

The core sealer is FM Approved and CSA Certified for ordinary and hazardous locations when used as described above.

KIT CONTENTS

Item	Qty	Description
A	1	CS-100 core sealer
B	1	Green/yellow tube

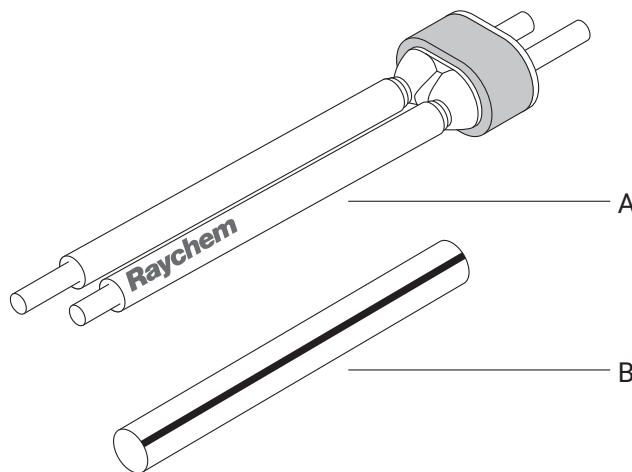
DESCRIPTION

The Raychem CS-100 core sealer is a fluoroether-sealant-filled insulator. It is designed for use with Raychem BTV-CR, BTV-CT, QTVR-CT, XTVR-CT, HTV-CT, and VPL-CT industrial parallel heating cables. The core sealer is for use only as a replacement for the heat-shrinkable tubing insulators or CS-100 core sealer in the following kits.

- JBS-100-A
- JBM-100-A
- JS-100-A
- C75-100-A
- JBS-100-L-A
- JBM-100-L-A
- HAK-C-100
- T-100
- AMG-BC-III
- AMG-BS-III
- AMG-BY-III

This product must not be used with monitor wire, LBTV2 heating cables, with other connection kits, or by itself.

For technical support, call your local Chemelex representative.



⚠ WARNING:

This component must be installed correctly to ensure proper operation and to prevent shock or fire. Read these important warnings and carefully follow all the installation instructions.

- Component approvals and performance are based on the use of Chemelex-specified parts only. Do not use substitute parts or vinyl electrical tape.
- Bus wires will short if they contact each other. Keep bus wires separated.
- Damaged bus wires can overheat or short. Do not break bus wire strands when handling them.
- Keep components and heating cable ends dry before and during installation.

⚠ CAUTION:

HEALTH HAZARD: Prolonged or repeated contact with the sealant in the boot may cause skin irritation. Wash hands thoroughly.

Overheating or burning the sealant will produce fumes that may cause polymer fume fever.

Avoid contamination of cigarettes or tobacco.

Consult MSDS VEN 0058 for further information.

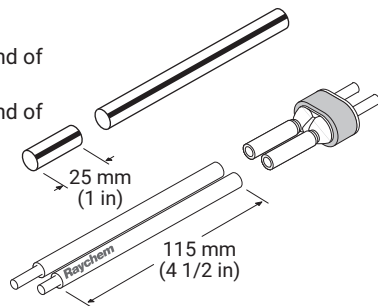
CHEMTREC 24-hour emergency telephone:
(800) 424-9300

Non-emergency health and safety information:
(800) 545-6258.

FOLLOW HEATING CABLE PREPARATION STEPS IN THE APPROPRIATE RAYCHEM CONNECTION KIT, THEN FOLLOW STEPS ILLUSTRATED BELOW.

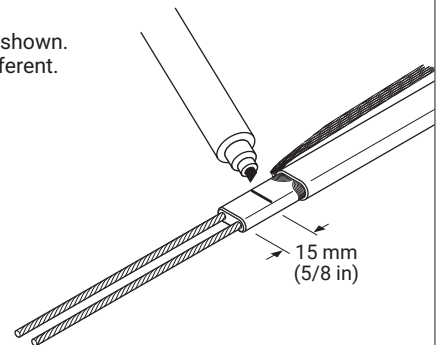
For VPL Only

- Cut off and discard end of green/yellow tube.
- Cut off and discard end of core sealer legs.



1

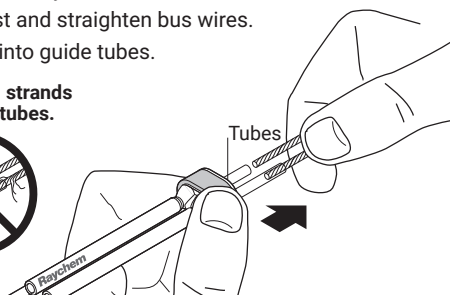
- Mark the jacket as shown. VPL will appear different.



2

- Refer to material safety data sheet VEN 0058.
- If needed, re-twist and straighten bus wires.
- Insert bus wires into guide tubes.

Make sure all strands go into the tubes.

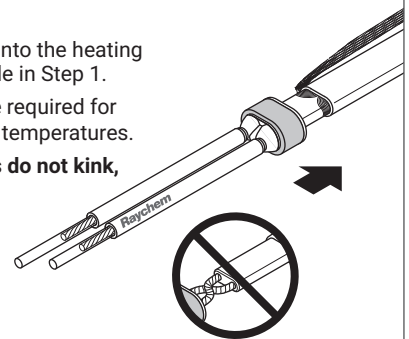


3

- Push the core sealer onto the heating cable to the mark made in Step 1.

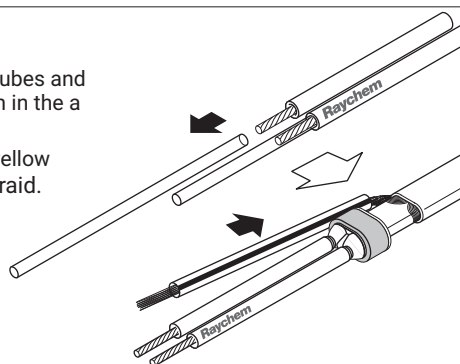
Note: Extra force may be required for larger cables or at lower temperatures.

Make sure the bus wires do not kink, bunch, or cross over.



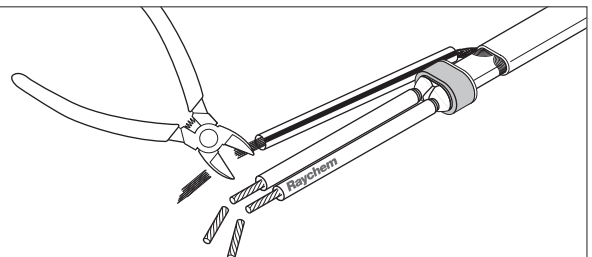
4

- Remove guide tubes and dispose of them in the plastic bag.
- Slip the green/yellow tube onto the braid.



5

- Trim wires to length specified in kit installation instructions.
- Resume instructions in the kit at the appropriate step.
- Leave these instructions with the end user for future reference.



North America

Tel +1 800 545 6258
info@chemelex.com

Latin America

Tel +1 713 868 4800
info@chemelex.com

Europe, Middle East, Africa, India

Tel +32 16 213 511
Fax +32 16 213 604
info@chemelex.com

Asia Pacific

Tel +86 21 2412 1688
infoAPAC@chemelex.com

chemelex
excellence is everything

chemelex.com

Raychem

Tracer

Pyrotenax

Nuheat

©2025 Chemelex. All Chemelex marks and logos are owned or licensed by Chemelex Europe GmbH or its affiliates. All other trademarks are the property of their respective owners. Chemelex reserves the right to change specifications without notice.

RAYCHEM-IM-H55821-CS100-EN-2504

PN 940845-000