

# Series 260HTS Card-Lok



Meets **VITA** 46, 48.2, 48.4, 48.5  
In alignment with the  
**SOSA**® Technical Standard

## RECOMMENDED GAP WIDTH

PCB + 7.62 mm (.300 in)

## RECOMMENDED TORQUE

68 N-cm (6 in-lbs)

## WEIGHT

1.21 g/cm (.109 oz/in)

## MATERIALS AND FINISH

### Brackets and Front Wedge

- **Material:** Aluminum Alloy 6061-T6 or T6XXX per ASTM-B221 or AMS-QQ-A-200/8
- **Finish:** See finish table on opposite page

### Screw and Washers

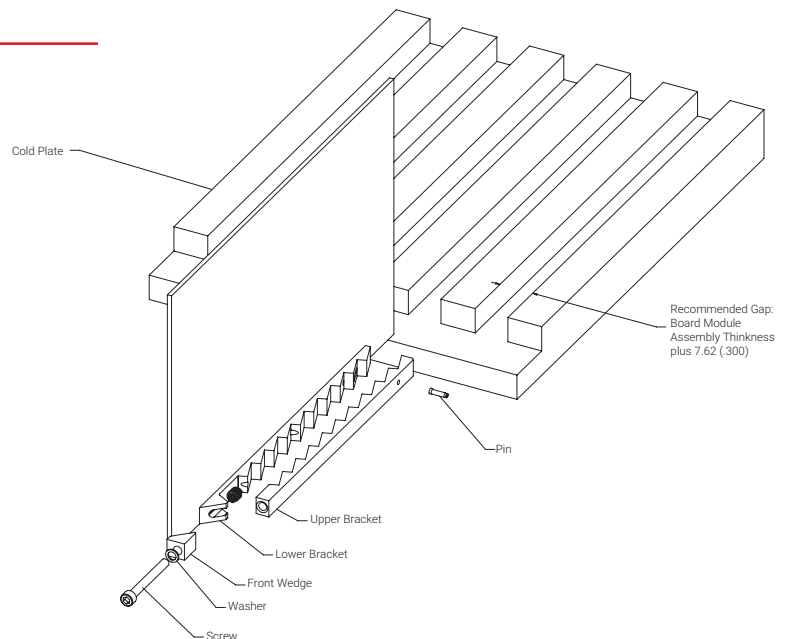
- **Material:** Stainless steel
- **Finish:** Passivated per AMS2700

### Threaded Insert

- **Material:** Stainless steel
- **Finish:** Passivated per AMS2700

### Pin

- **Material:** Stainless steel
- **Finish:** Passivated per AMS2700

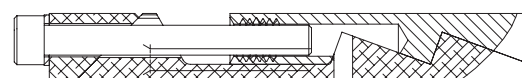


DETAIL K (RELAXED VIEW)

### Detail K

Prevents the unintentional disassembly of screw from shaft.

SOSA is a registered trademark of The Open Group

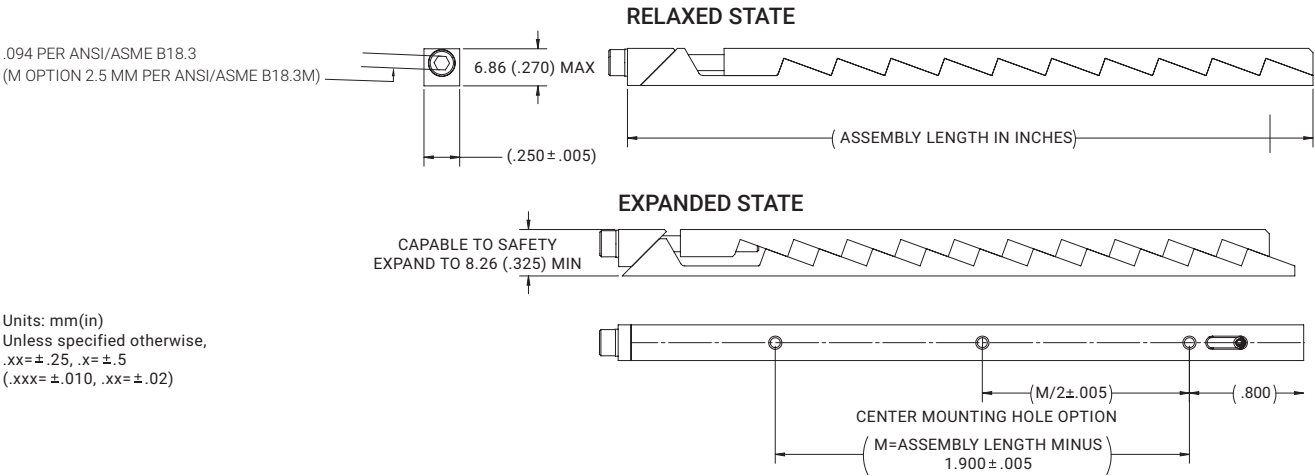


DETAIL L (RELAXED VIEW)

### Detail L

#### SCREW LOCKING INSERT

Provides prevailing torque for resistance to loosening from shock and libration. Meets NASM 8846.



**Part Number Code**  
Series 260HTS Card-Lok

**Screw Drive**  
Metric Screw Head 2.5 mm Hex Drive          M  
Standard Screw Head 3/32 Hex Drive          [Blank]

**Surface Finish**  
Black Anodized          A  
Electroless Nickel          EN

**Length**  
Length in 12.7 (.50 increments)          71.12 (2.80)  
to 325.12 (12.80)

**Mounting**  
Additional Center Mounting Hole          E  
None          [Blank]  
or choose from Mounting Method Table

**Threaded Insert**  
Locking Insert          L  
Free-Running Insert          [Blank]

**Screw Type**  
Captive Screw          K  
Standard          [Blank]

M A 260HTS -2.80 E L K

Part Number Code example:

M A 260HTS – 4.80ET2LK

Series 260HTS Card-Lok with 2.5 mm hex drive, black anodized finish, 121.9 (4.80) long, with additional mounting hole, 2–56 tapped hole, locking insert and captive screw.

Finish Table

Code Letter	Surface Finish
A	Black Anodize Per MIL-A-8625 Type II, Class 2
EN	Electroless Nickel Per MIL-C-26074 Class 4, Grade B, Bright

Mounting Method Table

Code Letter	Surface Finish
E	Additional Center Mounting Hole
T0	0–80 Tapped Hole
T2	2–56 Tapped Hole
TM2	M2 x 0.40 Tapped Hole
TM2.5	M2.5 x 0.45 Tapped Hole

nVent SCHROFF, Inc.

7328 Trade Street San Diego,  
CA 92121 USA,  
+1 800-525-4682

CALMARK™



Our powerful portfolio of brands:

CADDY ERICO HOFFMAN ILSCO SCHROFF TRACHTE