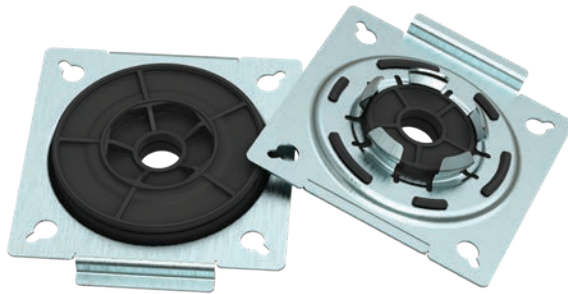


nVent LENTON Interlok Form Saver Seal

The nVent LENTON Interlok Form Saver Seal provides an easy and efficient means for securing nVent LENTON Interlok Grout-Fill Coupler variants to formwork. Designed for cast-in-place applications, simply click and tap the Form Saver Seal into the coupler and utilize the sturdy mounting plate to fasten onto the formwork. The integrated seal allows the secondary rebar to be inserted into the coupler and prevents concrete paste contamination and grout leakage out of the cavity.

Interlok Grout-Fill Coupler variants can be used to splice steel bars in various cast-in-place applications. When combined with the Form Saver Seal, this powerful combination can be utilized for segmental pours, closure pours, post-tensioned slabs, and repair work.



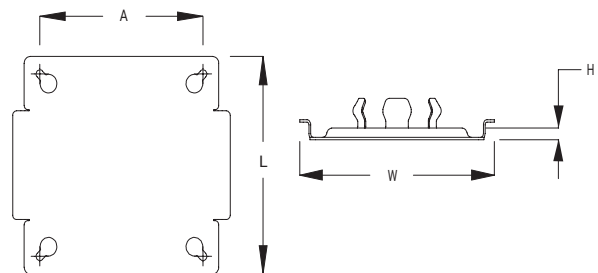
Material: Steel
Finish: Plain

FEATURES:

- Sturdy, spring-steel mounting flange
- Integrated rubber seal for grout cavity
- Easy snap-in installation
- Four keyholes for easy fastening using nails/screws
- Anchor tabs prevent dislodging in concrete
- Compatible with all nVent LENTON Interlok Grout-Fill Coupler variants

Catalog Number	Length L	Width W	Height H	Key Hole Spacing A	Color	Unit Weight
LKFSA16	4"	4.47"	0.4"	3.35"	Black	0.2 lb
LKFSA22	4"	4.47"	0.4"	3.35"	Blue	0.2 lb
LKFSA25	4"	4.47"	0.4"	3.35"	Red	0.2 lb
LKFSA20	4"	4.47"	0.4"	3.35"	Yellow	0.2 lb

Catalog Number	Compatible With:	
	Interlok Standard Grout Filled Couplers (LK Series)	Interlok No-Thread Grout Filled Couplers (LKNT Series)
LKFSA16	LK16, LK16D	—
LKFSA20	LK20(D)	LKNT20(D)
LKFSA22	LK5, LK6, LK7, LK22(D)	LKNT22(D)
LKFSA25	LK8, LK25(D)	LKNT25(D)



Our powerful portfolio of brands:

CADDY ERICO HOFFMAN ILSCO RAYCHEM SCHROFF