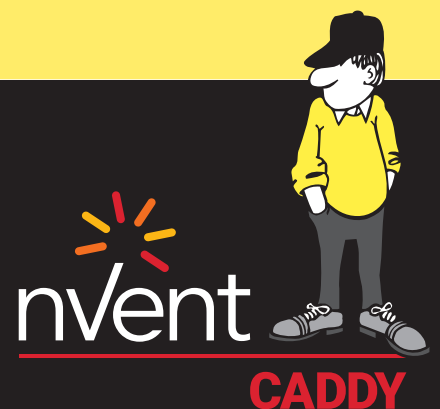




CONNECT AND PROTECT

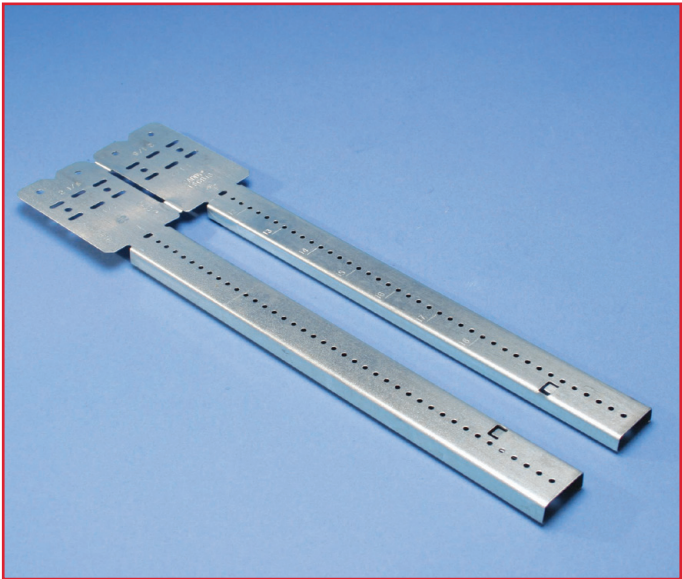
# Telescopic Screw Gun Bracket & Accessories



# TSGB


## FEATURES AND BENEFITS:

- Fast and easy installation
- Allows attachment from the front or inside of the stud in any depth
- Improved design with stamped inch markings and pilot holes accelerates precise mounting between studs
- Pilot holes allow easy and precise attachment of pipe clamps with a screwdriver
- Reduces movement of the tube and pipe and minimizes rattling
- Combined with the ESGP grommet, the TSGB allows safe and noiseless pipe and tube runs inside stud walls, even if crossing the studs
- Available in kits
- TSGBHDD is ideal for heavy applications, like supporting sinks, cabinets and showerheads
- Eliminates the need to search for wood joists
- Saves space



The TSGB Telescopic Screw Gun Bracket for the installation of pipe and tube runs between studs offers a unique, one-piece, break-apart design that makes mounting easier than ever. Requiring only a screw gun for installation (nVent recommends low-profile screw nVent CADDY Part No. SMS8), the TSGB is adjustable to allow non-standard stud spacing and features interlocking tabs

for convenient identification and bending. The TSGB16 works with stud spacing from 11 to 18 inches, and the TSGB24 works with stud spacing from 17 to 26 inches. Both versions of the TSGB are notched and marked for easy identification and bending at 1-1/2 inch and 2-1/8 inch depths.

	Description	Packing Unit
TSGB16	16" adjustable screw gun box bracket for stud space 11" to 18"	50
TSGB24	24" adjustable screw gun box bracket for stud space 17" to 26"	50
TSGBHDD	Adjustable screw gun box bracket for stud space 13" to 23-5/8"	10
TSGB16112	TSGB16 with TPC112	25 + 50
TSGB24112	TSGB24 with TPC112	25 + 50



# TSGB

## INSTALLATION INSTRUCTIONS:



1. Bend TSGB at score mark.



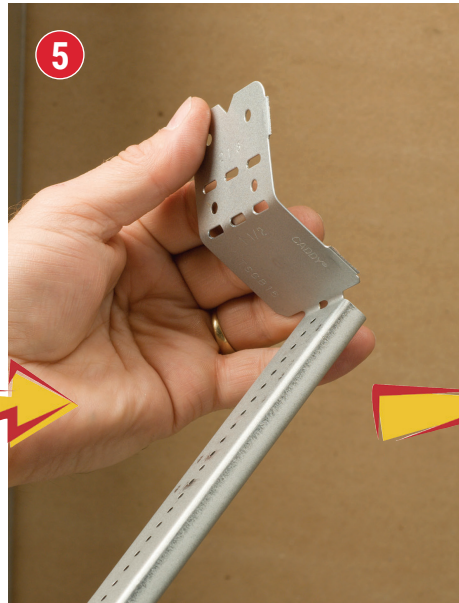
2. Break apart into two pieces.



3. Slide one arm on top of the other until you hear a click.



4. Bend side tabs at first score.



5. Bend side tabs at second score to adjust for the stud depth.



6. Install TSGB to stud with SMS8 low-profile screw.

# TSGBHD

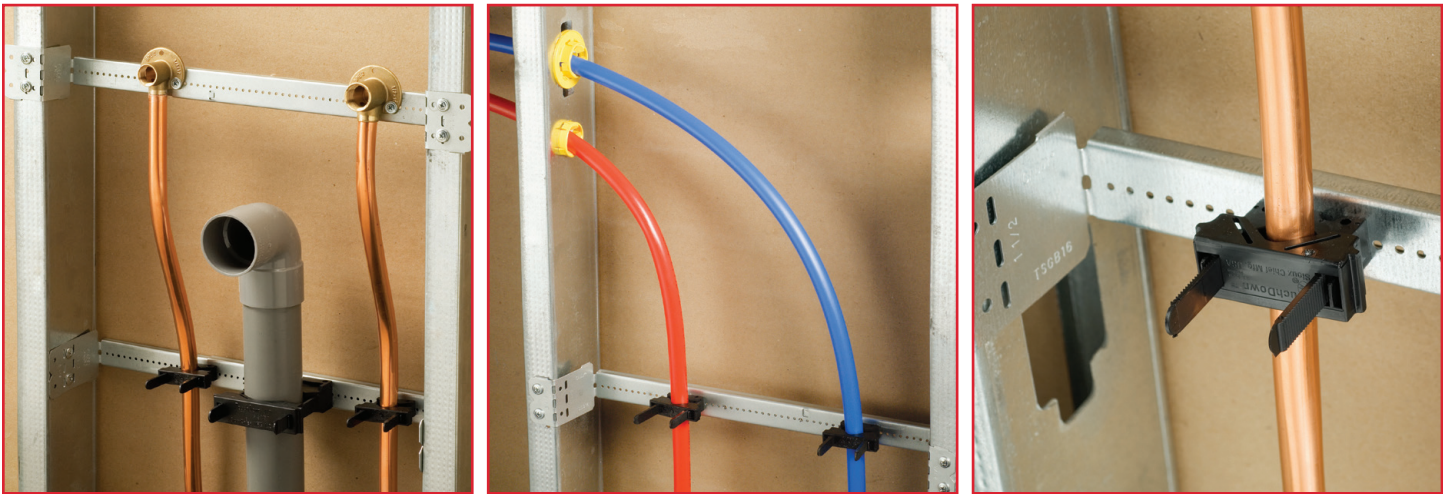
The TSGBHD provides a strong mounting platform between metal or wood studs for heavier applications, such as sinks, cabinets and showerheads. The TSGBHD has 3-1/8 inches of usable vertical mounting space, allowing the installer greater flexibility in mounting devices to the bracket.



# TPC Tube and Pipe Clamps

The patented design of the TPC clamp offers a unique, time-saving solution for tube/pipe positioning within the range of 3/8 through 2-3/8 inches OD. The strong, UV-resistant Nylon 66 reduces vibration and noise and serves as an insulator. Pilot holes in the bracket permit easy attachment with a screwdriver. The locking mechanism is releasable. The pipe clamps are applicable in temperatures from -10°F through +130°F.

Nº	Description	Packing Unit
TPC112	Tube and pipe clamp 3/8" thru 1-1/8"	50
TPC238	Tube and pipe clamp 5/8" thru 2-3/8"	50



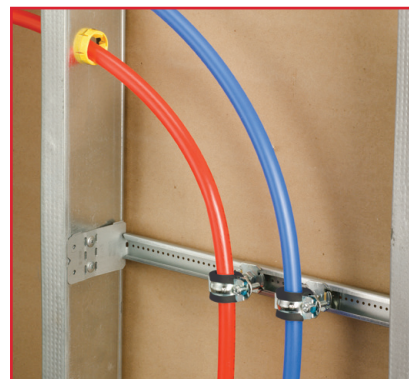
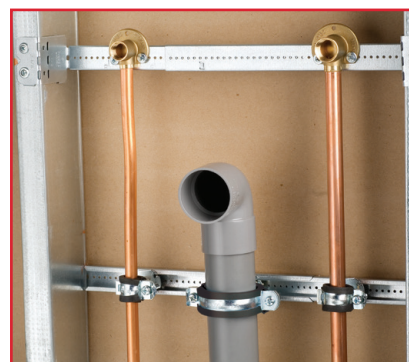


# nVent CADDY Superfix 454

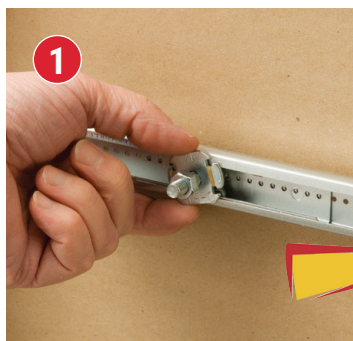
The Superfix 454 pipe clamps feature a patented closing mechanism to allow easy installation and eliminate the need to disassemble the clamp prior to installation. An integrated EPDM 45° A shore rubber gasket helps eliminate vibration and rattling, meets the requirements of DIN 4109 and is temperature rated from -58°F to 230°F. An electro-galvanized zinc layer protects the clamps against corrosion. Use C-FIX snap-in hammerhead bolts for connection.

The Superfix 454 is an easy-to-close one-screw pipe clamp that works on steel and copper pipes from IP 1/4 inch, CT 3/8 to 2 inches. It uses a 3/8 inch nut for connection, which is specially designed to mount the pipe as close as possible to the TSGB.

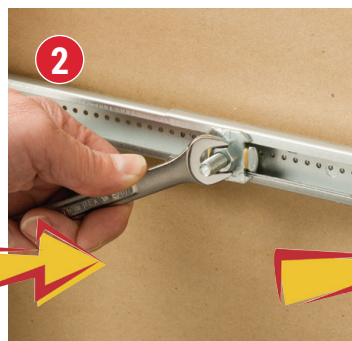
Nº	Description	Packing Unit
454001	Superfix 454 3/8" 1/4" IP - 3/8" CT	150
454002	Superfix 454 3/8" 3/8" IP - 1/2" CT	150
454003	Superfix 454 3/8" 5/8" CT	100
454004	Superfix 454 3/8" 1/2" IP - 3/4" CT	100
454005	Superfix 454 3/8" 3/4" IP - 1" CT	100
454006	Superfix 454 3/8" 1" IP - 1-1/4" CT	50
454007	Superfix 454 3/8" 1-1/4" IP - 1-1/2" CT	50
454008	Superfix 454 3/8" 1-1/2" IP	50
454009	Superfix 454 3/8" 2" CT	50
454010	Superfix 454 3/8" 2" IP	50



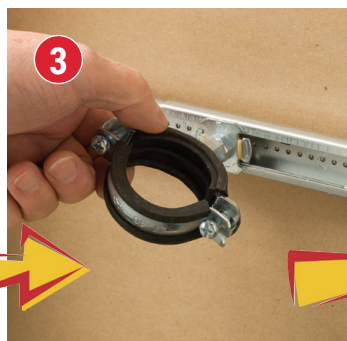
## INSTALLATION INSTRUCTIONS:



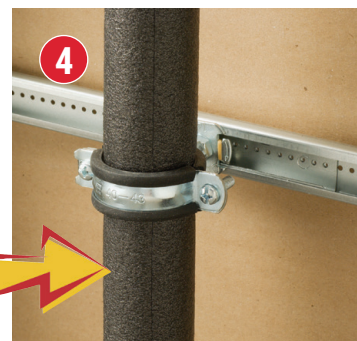
Insert the channel nut into the channel and turn the washer 90° clockwise.



Slide the C-FIX to the correct position and tighten the hex nut with a wrench.



Apply the pipe clamp by turning clockwise at least 2-1/2 turns; do not turn counterclockwise to adjust the angle.

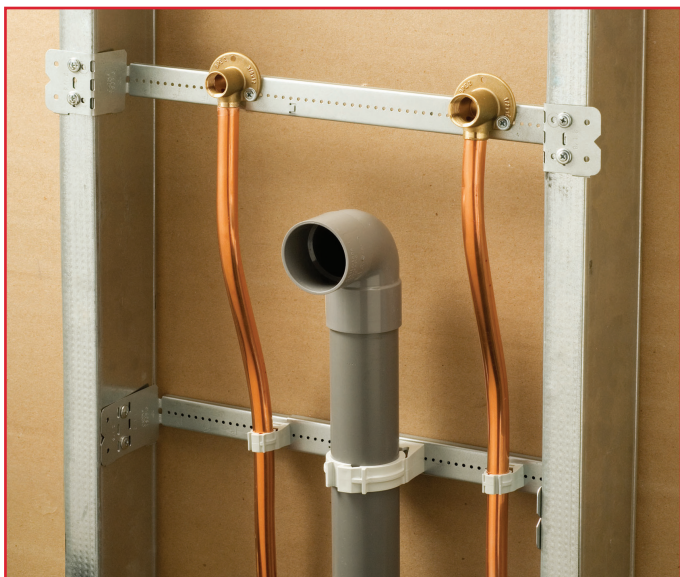


Insert the pipe and close the pipe clamp.

# nVent CADDY Superklip

The universally applicable Superklip pipe clamp is suitable for pipe sizes ranging from 3/8 to 2 inches. The pipe clamp closes and locks automatically when the pipe is inserted. Premium-grade copolymer Xenoy® construction makes the Superklip resistant to environmental stresses. It also resists oil and gas, UV and aging. The special design of the pipe clamp permits axial pipe expansion and contraction. It holds a KIWA certificate and is recyclable. The pipe clamps are also applicable in temperatures from -13°F to 194°F.

Nº	Description	Packing Unit
389001	Superklip 3/8" CT	100
389002	Superklip 1/2" CT	100
389003	Superklip 3/8" IP, 5/8" CT	100
389004	Superklip 1/2" IP	100
389005	Superklip 3/4" CT	100
389006	Superklip 3/4" IP	50
389007	Superklip 1" CT	50
389008	Superklip 1" IP, 1-1/4" CT	50
389011	Superklip 1-1/4" IP, 1-1/2" CT	25
389012	Superklip 1-1/2" IP	25
389013	Superklip 2" CT	25
389014	Superklip 2" IP	20





# ESGP Grommet and MSP20

The ESGP Grommet provides 360° protection for plumbing and fire protection piping and tubing. It fits all factory- and field-punched holes due to its unique back-to-back design. For the field, nVent CADDY offers the MSP20 Metal Stud Punch. The ESGP Grommet is suitable for plastic, steel or copper pipe with outer diameters up to 1-1/8 inches.



Nº	Description	Packing Unit
ESGP	Easy Snap Grommet	100
MSP20	Metal Stud Punch	1

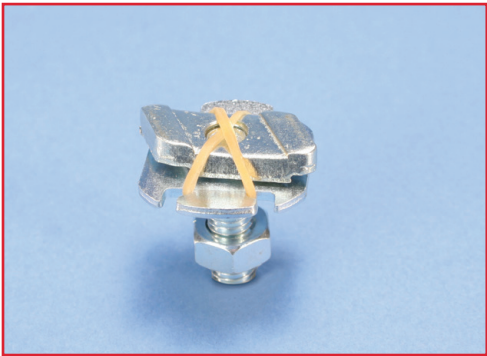


## Self-Tapping Screws



Nº	Description	Packing Unit
SMS8	Low profile, self tapping screw	1000

## C-FIX Hammerhead Bolts



Nº	Description	Packing Unit
CFIX0380100EG	Channel nut with flat washer	100

Our powerful portfolio of brands:

**CADDY   ERICO   HOFFMAN   RAYCHEM   SCHROFF   TRACER**



**[nVent.com/CADDY](https://nVent.com/CADDY)**

**WARNING:** nVent products shall be installed and used only as indicated in nVent's product instruction sheets and training materials. Instruction sheets are available at [nVent.com/ERICO](https://nVent.com/ERICO) and from your nVent customer service representative. Improper installation, misuse, misapplication or other failure to completely follow nVent's instructions and warnings may cause product malfunction, property damage, serious bodily injury and/or death, and void your warranty.

Xenoy is a registered trademark of General Electric Company

©2018 nVent. All nVent marks and logos are owned or licensed by nVent Services GmbH or its affiliates. All other trademarks are the property of their respective owners. nVent reserves the right to change specifications without notice.

CADDY-SB-M761B-M1139LT07NAEN-EN-1805