

Cable Entry Systems

Cable Entry Solution – Round Modular



INDUSTRY STANDARDS

UL 508A Component Recognized; Type 1, 12, 4X (indoor only);
File No. E61997
UL94 V-0 Flammability

IP66; NEMA 1, 12, 4X (indoor only)

CE

APPLICATION

Anywhere a generic cable gland is used is where the Cable Entry Round Modular Solution (CCFR) will excel. This solution has been designed to be more robust than generic glands, while featuring excellent strain relief, and being quick and easy to assemble/install.

FEATURES

- The Cable Entry Round Modular Solution accepts preassembled and non-assembled cables with or without connectors: no need to disassemble and reconnect connectors which may void cable manufacturer warranty.
- The modularity of this solution comes from the component combination of Frame, Locking Adapter, and Counter Nut, all of which are included in this "kit". Spare parts are available as needed.
- Grommets and Inlays can be combined in many ways resulting in numerous configurations for improved versatility over a singular generic cable gland; both Grommets and Inlays sold separately.
- Constructed from black TPE plastic with a smooth matte finish; glass-fiber reinforced for additional strength.
- Sold in packs of 10.
- Functional Operating Temp.: –40 to 90°C/–40 to 194°F

BULLETIN: CE1

Catalog Number	Outer Diameter mm (in.)	Cutout Diameter mm (in.)	Grommets Accepted	Package Quantity
CCFR20	48 (1.89)	20.3 (0.80)	Single Small Grommet only	10
CCFR25	48 (1.89)	25.3 (1.00)	Single Small Grommet only	10
CCFR32	48 (1.89)	32.3 (1.27)	Single Small Grommet only	10
CCFR40	80 (3.15)	40.4 (1.59)	Multiple Grommet combinations	10
CCFR50	80 (3.15)	50.4 (1.98)	Multiple Grommet combinations	10
CCFR63*	80 (3.15)	63.4 (2.50)	Multiple Grommet combinations	10

*CCFR63 is not UL Recognized at this time.

Cable Entry Solution – Rectangular, Inside (CCFI)



INDUSTRY STANDARDS

UL 508A Component Recognized; Type 1, 12, 4X (indoor only);
File No. E61997
UL94 V-0 Flammability

IP66; NEMA 1, 12, 4X (indoor only)

CE

APPLICATION

The Rectangular Cable Entry Solution CCFI is designed to affix to the outside of an enclosure with gland components and cable routing from the inside-out. Anywhere a series of generic cable glands are used is where the CCFI solution will excel. This solution has been designed to be more robust than generic glands, while featuring excellent strain relief, and being quick and easy to assemble/install.

FEATURES

- The Cable Entry Rectangular Solution (CCFI) accepts preassembled and non-assembled cables with or without connectors: no need to disassemble and reconnect connectors which may void cable manufacturer warranty.
- CCFI comes standard with Inlays to accept Small Grommets, but said Grommets are sold separately. For alternate configurations, consult the Gland sections of Inlays and Grommets. Also sold separately is the CCFLI Lock, which ensures UL compliance is maintained for the solution.
- Through the combination of Inlays and Grommets one is able to construct numerous configurations with far superior versatility over generic cable glands.
- Consider the use of our Cable Entry Rectangular Hole Punch tools to achieve the appropriate cutout.
- Constructed from black TPE plastic with a smooth matte finish; glass-fiber reinforced for additional strength.
- Sold individually.
- Functional Operating Temp.: -40 to 90°C/-40 to 194°F

BULLETIN: CE1

Catalog Number	Description	Cable Entries	Cutout Size (mm)	Cutout Size (in.)	Height (mm)	Height (in.)	Width (mm)	Width (in.)
CCFI14	Inside Modular cable entry 1/4	4	46 x 46	1.81 x 1.81	81	3.19	70	2.76
CCFI610	Inside Modular cable entry 6/10	6	68.5 x 46	2.70 x 1.81	106	4.17	70	2.76
CCFI816	Inside Modular cable entry 8/16	8	91 x 46	3.58 x 1.81	126	4.96	70	2.76
CCFI1024	Inside Modular cable entry 10/24	10	113 x 46	4.47 x 1.81	153	6.02	70	2.76

Cable Entry Solution – Rectangular, Outside (CCFO)



INDUSTRY STANDARDS

UL 508A Component Recognized; Type 1, 12, 4X (indoor only);
File No. E61997
UL94 V-0 Flammability

IP66; NEMA 1, 12, 4X (indoor only)

CE

APPLICATION

The Rectangular Cable Entry Solution CCFO is designed to affix to the outside of an enclosure with gland components and cable routing also from the outside. Anywhere a series of generic cable glands are used is where the CCFO solution will excel. This solution has been designed to be more robust than generic glands, while featuring excellent strain relief, and being quick and easy to assemble/install.

FEATURES

- The Cable Entry Rectangular Solution (CCFO) accepts preassembled and non-assembled cables with or without connectors: no need to disassemble and reconnect connectors which may void cable manufacturer warranty.
- CCFO comes standard with Inlays to accept Small Grommets, but said Grommets are sold separately. For alternate configurations, consult the Gland sections of Inlays and Grommets. Also sold separately is the CCFO Lock, which ensures UL compliance is maintained for the solution.
- Through the combination of Inlays and Grommets one is able to construct numerous configurations with far superior versatility over generic cable glands.
- Consider the use of our Cable Entry Rectangular Hole Punch tools to achieve the appropriate cutout.
- Constructed from black TPE plastic with a smooth matte finish; glass-fiber reinforced for additional strength.
- Sold individually.
- Functional Operating Temp.: -40 to 90°C/-40 to 194°F

BULLETIN: CE1

Catalog Number	Description	Cable Entries	Cutout Size (mm)	Cutout Size (in.)	Height (mm)	Height (in.)	Width (mm)	Width (in.)
CCFO14	Outside Modular cable entry 1/4	4	46 x 36	1.81 x 1.42	64	2.52	81	3.19
CCFO610	Outside Modular cable entry 6/10	6	65 x 36	2.56 x 1.42	64	2.52	106	4.17
CCFO816	Outside Modular cable entry 8/16	8	86 x 36	3.39 x 1.42	64	2.52	126	4.96
CCFO1024	Outside Modular cable entry 10/24	10	112 x 36	4.41 x 1.42	64	2.52	153	6.02

Cable Entry Solution – Enhanced Rectangular Membrane



INDUSTRY STANDARDS

UL 508A Component Recognized; Type 1, 12, 4X (indoor only);
File No. E61997
UL94 V-0 Flammability

IP66; NEMA 1, 12, 4X (indoor only)

CE

APPLICATION

The Enhanced Rectangular Membrane Cable Entry Solution features outstanding strain relief through the presence of cone grommets molded in the membrane. The solution installs quickly and reliably with a snap-in system that secures from outside the enclosure, and screw-fixation from within the enclosure. Again, the membrane accepts many cables of various sizes, thus replacing numerous generic glands.

FEATURES

- The Enhanced Rectangular Membrane solution is designed for use on enclosures with a wall thickness of 1.5–2.5 mm (0.06–0.10 in).
- Built-in plastic frame increases strength and rigidity of membrane solution, and features snap-in clips to secure solution from outside enclosure prior to screw-fixation.
- Consider the use of our Cable Entry Rectangular Hole Punch tools to achieve the appropriate cutout.
- Constructed from black TPE plastic with a smooth matte finish; both Halogen and silicone free.
- Sold individually.
- Operating Temperature: –40 to 90°C/–40 to 194°F

BULLETIN: CE1

Catalog Number	Total Cable Entries	Number of Cables x Wire Diameter Range mm (in.)	Cutout Size (mm/in.)	Height (mm/in.)	Width (mm/in.)
CEPH1324	13	10 x 3.2–6.3 (0.13–0.25) 3 x 16.0–20.5 (0.63–0.81)	36 x 112 1.42 x 4.41	58 2.28	149.6 5.89
CEPH1624	16	8 x 3.2–5.5 (0.13–.22) 6 x 5.0–8.5 (0.20–0.33) 2 x 9.5–14.5 (0.37–0.57)	36 x 112 1.42 x 4.41	58 2.28	149.6 5.89
CEPH16124	16	2 x 3.2–6.3 (0.13–0.25) 9 x 4.0–7.5 (0.16–0.30) 1 x 5.5–10.5 (0.22–0.41) 1 x 8.0–12.5 (0.31–0.49) 3 x 12.0–16.2 (0.47–0.64)	36 x 112 1.42 x 4.41	58 2.28	149.6 5.89
CEPH2024	20	12 x 3.2–6.3 (0.13–0.25) 8 x 5.5–10.5 (0.22–0.41)	36 x 112 1.42 x 4.41	58 2.28	149.6 5.89
CEPH2124	21	1 x 3.2–6.3 (0.13–0.25) 14 x 4.0–7.5 (0.16–0.30) 4 x 5.5–10.5 (0.22–0.41) 2 x 8.0–12.5 (0.31–0.49)	36 x 112 1.42 x 4.41	58 2.28	149.6 5.89
CEPH3224	32	32 x 3.2–6.3 (0.13–0.25)	36 x 112 1.42 x 4.41	58 2.28	149.6 5.89

Cable Entry Solution – Round Membrane



FEATURES

- The Round Membrane solution is designed for use on enclosures with a wall thickness of 1.5–2.5 mm (0.06–0.10 in).
- Constructed from gray TPE plastic with a smooth matte finish; both Halogen and silicone free.
- Sold in packs of 10.
- Operating Temperature: –40 to 90°C/–40 to 194°F

BULLETIN: CE1

INDUSTRY STANDARDS

UL 508A Component Recognized; Type 1, 12;
File No. E61997
UL94 V-0 Flammability

IP54; NEMA 1, 12

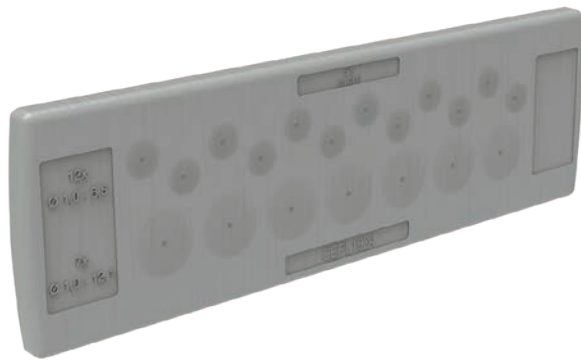
CE

APPLICATION

The Round Membrane Cable Entry Solution installs quickly and easily from outside the enclosure, and accepts many cables of various sizes, thus replacing numerous generic glands.

Catalog Number	Total Cable Entries	Number of Cables x Wire Diameter Range mm (in.)	Cutout Diameter mm (in.)	Outer Diameter mm (in.)	Package Quantity
CEPRL5009	9	5 x 1.0–7.0 (0.04–0.28) 4 x 1.0–18.0 (0.04–0.71)	50 (1.97)	58 (2.28)	10
CEPRL5011	11	7 x 1.0–7.2 (0.04–0.28) 3 x 1.0–11.2 (0.04–0.44) 1 x 1.0–22.5 (0.04–0.89)	50 (1.97)	58 (2.28)	10
CEPRL5012	12	10 x 1.0–9.2 (0.04–0.36) 2 x 1.0–11.2 (0.04–0.44)	50 (1.97)	58 (2.28)	10
CEPRL5016	16	4 x 1.0–5.3 (0.04–0.21) 5 x 1.0–6.3 (0.04–0.25) 3 x 1.0–9.5 (0.04–0.37) 4 x 1.0–11.3 (0.04–0.44)	50 (1.97)	58 (2.28)	10
CEPRL5018	18	2 x 1.0–4.0 (0.04–0.16) 2 x 1.0–6.0 (0.04–0.24) 4 x 1.0–7.2 (0.04–0.28) 5 x 1.0–9.4 (0.04–0.37) 5 x 1.0–12.0 (0.04–0.47)	50 (1.97)	58 (2.28)	10
CEPRL5020	20	16 x 1.0–6.3 (0.04–0.25) 4 x 1.0–9.3 (0.04–0.37)	50 (1.97)	58 (2.28)	10
CEPRL5035	35	35 x 1.0–5.2 (0.04–0.20)	50 (1.97)	58 (2.28)	10

Cable Entry Solution – Rectangular Membrane



FEATURES

- The Rectangular Membrane solution is designed for use on enclosures with a wall thickness of 1.5–2.5 mm (0.06–0.10 in).
- Consider the use of our Cable Entry Rectangular Hole Punch tools to achieve the appropriate cutout.
- Constructed from gray TPE plastic with a smooth matte finish; both Halogen and silicone free.
- Sold in packs of 10.
- Operating Temperature: –40 to 90°C/–40 to 194°F

INDUSTRY STANDARDS

UL 508A Component Recognized; Type 1, 12;
File No. E61997
UL94 V-0 Flammability

IP54; NEMA 1, 12

CE

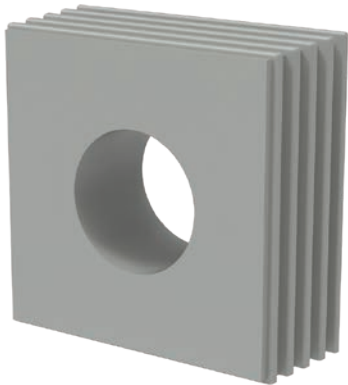
APPLICATION

The Rectangular Membrane Cable Entry Solution installs quickly and easily from outside the enclosure, and accepts many cables of various sizes, thus replacing numerous generic glands.

BULLETIN: CE1

Catalog Number	Total Cable Entries	Number of Cables x Wire Diameter Range mm (in.)	Cutout Size (mm/in.)	Height (mm/in.)	Width (mm/in.)	Package Quantity
CEPL1224	12	12 x 1.0–15.0 (0.04–0.59)	36 x 112 1.42 x 4.41	44 1.73	142 5.59	10
CEPL1424	14	14 x 1.0–12.1 (0.04–0.48)	36 x 112 1.42 x 4.41	44 1.73	142 5.59	10
CEPL1724	17	5 x 1.0–10.5 (0.04–0.41) 12 x 1.0–12.6 (0.04–0.50)	36 x 112 1.42 x 4.41	44 1.73	142 5.59	10
CEPL1824	18	4 x 1.0–6.5 (0.04–0.26) 5 x 1.0–10.5 (0.04–0.41) 5 x 1.0–12.5 (0.04–0.49) 4 x 1.0–16.1 (0.04–0.63)	36 x 112 1.42 x 4.41	44 1.73	142 5.59	10
CEPL1924	19	12 x 1.0–6.5 (0.04–0.26) 7 x 1.0–12.1 (0.04–0.48)	36 x 112 1.42 x 4.41	44 1.73	142 5.59	10
CEPL2624	26	16 x 1.0–6.5 (0.04–0.26) 4 x 1.0–12.1 (0.04–0.48) 4 x 1.0–16.1 (0.04–0.63) 2 x ASI-LTG	36 x 112 1.42 x 4.41	44 1.73	142 5.59	10
CEPL4224	42	12 x 1.0–7.2 (0.04–0.28) 17 x 1.0–6.4 (0.04–0.25) 12 x 1.0–5.0 (0.04–0.20) 1 x 1.0–4.7 (0.04–0.19)	36 x 112 1.42 x 4.41	44 1.73	142 5.59	10
CEPL4824	48	48 x 1.0–6.5 (0.04–0.26)	36 x 112 1.42 x 4.41	44 1.73	142 5.59	10
CEPL5024	50	50 x 1.0–6.5 (0.04–0.26)	36 x 112 1.42 x 4.41	44 1.73	142 5.59	10

Gland – Cable Entry Small Grommet



INDUSTRY STANDARDS

UL 508A Component Recognized; Type 1, 12, 4X (indoor only);
File No. E61997
UL94 V-0 Flammability

IP66; NEMA 1, 12, 4X (indoor only)

CE

APPLICATION

The Cable Entry Small Grommet is the principle gland solution used to pass wire and cable sized 1.5 mm up to 16 mm.

FEATURES

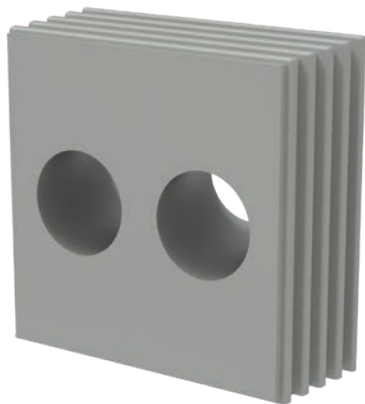
- Grommets work in tandem with Cable Entry Inlays to facilitate cable passage in a multitude of applications with various entry requirements. Grommets are not supplied standard with Cable Entry CCF solutions, and must be purchased separately.
- Grommets feature a conical shape for easy and directional installation, four edge ribs for enhanced sealing, and a wave cut that also enhances sealing while eliminating the need to remove connectors on assembled cables.
- Grommets are first placed around cable, and then inserted into the cable gland with the narrow end leading; said Grommets provide a static strain relief in accordance with DIN EN 62444.
- Consider the use of Tool CEAT01 for ergonomic installation of Grommets.
- Constructed from gray TPE plastic with a smooth matte finish; both Halogen and silicone free.
- Sold in packs of 10.
- Operating Temperature: -40 to 90°C/-40 to 194°F

BULLETIN: CE1

Catalog Number	Description	Package Quantity
CCFGSB	Grommet small blind	10
CCFGS015	Grommet small 1.5–2 mm	10
CCFGS2	Grommet small 2–3 mm	10
CCFGS3	Grommet small 3–4 mm	10
CCFGS4	Grommet small 4–5 mm	10
CCFGS5	Grommet small 5–6 mm	10
CCFGS6	Grommet small 6–7 mm	10
CCFGS7	Grommet small 7–8 mm	10
CCFGS8	Grommet small 8–9 mm	10
CCFGS9	Grommet small 9–10 mm	10
CCFGS10	Grommet small 10–11 mm	10
CCFGS11	Grommet small 11–12 mm	10
CCFGS12	Grommet small 12–13 mm	10
CCFGS13	Grommet small 13–14 mm	10
CCFGS14*	Grommet small 14–15 mm	10
CCFGS15*	Grommet small 15–16 mm	10

*Both CCFGS14 and CCFGS15 are not UL Recognized.

Gland – Cable Entry Small, Multi-Hole Grommet



INDUSTRY STANDARDS

UL 508A Component Recognized; Type 1, 12, 4X (indoor only);
File No. E61997

UL94 V-0 Flammability

IP66; NEMA 1, 12, 4X (indoor only)

CE

APPLICATION

The Cable Entry Small, Multi-Hole Grommet is identical in size and shape as the standard Small Grommet, but features multiple holes to support the passage of additional cables.

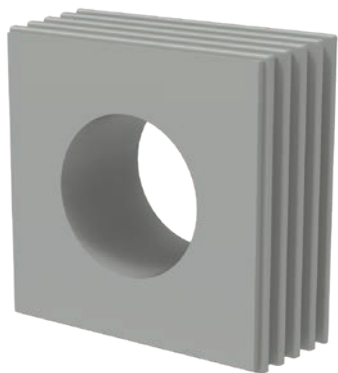
FEATURES

- Grommets work in tandem with Cable Entry Inlays to facilitate cable passage in a multitude of applications with various entry requirements. Grommets are not supplied standard with Cable Entry CCF solutions, and must be purchased separately.
- Grommets feature a conical shape for easy and directional installation, four edge ribs for enhanced sealing, and a wave cut that also enhances sealing while eliminating the need to remove connectors on assembled cables.
- Grommets are first placed around cable, and then inserted into the cable gland with the narrow end leading; said Grommets provide a static strain relief in accordance with DIN EN 62444.
- Consider the use of Tool CEAT01 for ergonomic installation of Grommets.
- Constructed from gray TPE plastic with a smooth matte finish; both Halogen and silicone free.
- Sold in packs of 10.
- Operating Temperature: -40 to 90°C/-40 to 194°F

BULLETIN: CE1

Catalog Number	Description	Package Quantity
CCFGSX45	Grommet small; four, 5 mm holes	10
CCFGSX36	Grommet small; three, 6 mm holes	10
CCFGSX27	Grommet small; two, 7 mm holes	10
CCFGSX28	Grommet small; two, 8 mm holes	10
CCFGSX46	Grommet small; four, 6 mm holes	10
CCFGSX25	Grommet small; two, 5 mm holes	10
CCFGSX26	Grommet small; two, 6 mm holes	10
CCFGSX43	Grommet small; four, 3 mm holes	10
CCFGSX44	Grommet small; four, 4 mm holes	10
CCFGSX445	Grommet small; four, 4.5 mm holes	10
CCFGSX265	Grommet small; two, 6.5 mm holes	10

Gland – Cable Entry Large Grommet



INDUSTRY STANDARDS

UL 508A Component Recognized; Type 1, 12, 4X (indoor only);
File No. E61997
UL94 V-0 Flammability

IP66; NEMA 1, 12, 4X (indoor only)

CE

APPLICATION

The Cable Entry Large Grommet is an alternate gland solution when passing larger diameter cables sized 14 mm up to 35 mm. The Large Grommet takes the place of four Small Grommets and Plus-Shaped Inlay in a Cable Entry CCF solution.

FEATURES

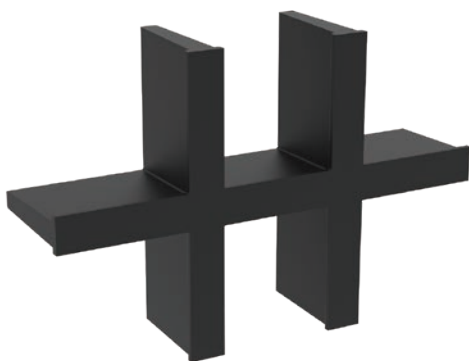
- Grommets work in tandem with Cable Entry Inlays to facilitate cable passage in a multitude of applications with various entry requirements. Grommets are not supplied standard with Cable Entry CCF solutions, and must be purchased separately.
- Grommets feature a conical shape for easy and directional installation, four edge ribs for enhanced sealing, and a wave cut that also enhances sealing while eliminating the need to remove connectors on assembled cables.
- Grommets are first placed around cable, and then inserted into the cable gland with the narrow end leading; said Grommets provide a static strain relief in accordance with DIN EN 62444.
- Constructed from gray TPE plastic with a smooth matte finish; both Halogen and silicone free.
- Sold in packs of 10.
- Operating Temperature: -40 to 90°C/-40 to 194°F

BULLETIN: CE1

Catalog Number	Description	Package Quantity
CCFGLB	Grommet large blind	10
CCFGL14	Grommet large 14–15 mm	10
CCFGL15	Grommet large 15–16 mm	10
CCFGL16	Grommet large 16–17 mm	10
CCFGL17	Grommet large 17–18 mm	10
CCFGL18	Grommet large 18–19 mm	10
CCFGL19	Grommet large 19–20 mm	10
CCFGL20	Grommet large 20–21 mm	10
CCFGL21	Grommet large 21–22 mm	10
CCFGL22	Grommet large 22–23 mm	10
CCFGL23	Grommet large 23–24 mm	10
CCFGL24	Grommet large 24–25 mm	10
CCFGL25	Grommet large 25–26 mm	10
CCFGL26	Grommet large 26–27 mm	10
CCFGL27	Grommet large 27–28 mm	10
CCFGL28	Grommet large 28–29 mm	10
CCFGL29	Grommet large 29–30 mm	10
CCFGL30	Grommet large 30–31 mm	10
CCFGL31	Grommet large 31–32 mm	10
CCFGL32	Grommet large 32–33 mm	10
CCFGL33*	Grommet large 33–34 mm	10
CCFGL34*	Grommet large 34–35 mm	10

*Both CCFGL33 and CCFGL34 are not UL Recognized.

Gland – Cable Entry Inlay



INDUSTRY STANDARDS

UL 508A Component Recognized;
File No. E61997
UL94 V-0 Flammability

APPLICATION

The Cable Entry Inlay, or Divider, functions to create glands within the Cable Entry solution, where Grommets facilitate cable passage. Through the use of various Inlays and Grommets, any number of configurations can be produced.

Catalog Number	Shape & Function	Package Quantity
CCFD1	Straight Inlay; creates 2 glands	5
CCFD2	T-Shaped Inlay; creates 3 glands	5
CCFD4	Plus-Shaped Inlay; creates 4 glands	5
CCFD6	Side-by-side Plus-Shaped Inlay; creates 6 glands	5

FEATURES

- The Cable Entry Inlay works in tandem with Grommets to facilitate cable passage in a multitude of applications with various entry requirements.
- An audible “click” serves as confirmation of a correct installation.
- Note that Rectangular CCF solutions come standard with Inlays designed to support small Grommets only: Inlays can be replaced for alternate configurations.
- Constructed from black TPE plastic with a smooth matte finish.
- Sold in packs of 5.
- Functional Operating Temp.: –40 to 90°C/–40 to 194°F

BULLETIN: CE1

Gland – Cable Entry CCFI Lock



INDUSTRY STANDARDS

UL 508A Component Recognized;
File No. E61997
UL94 V-0 Flammability

APPLICATION

The Cable Entry CCFI Lock is considered an optional lock that is sold separately, but it is required for UL compliance. The Lock ensures that the Grommets cannot be pushed out of the frame without the use of tools.

Catalog Number	Description	Package Quantity
CCFLI14	Locking frame for CCFI14	10
CCFLI610	Locking frame for CCFI610	10
CCFLI816	Locking frame for CCFI816	10
CCFLI1024	Locking frame for CCFI1024	10

FEATURES

- The Cable Entry CCFI Lock is used with the CCFI Cable Entry solution, where the associated gland accessories install from within the enclosure.
- The CCFI Lock ensures UL compliance of the Cable Entry solution, while also adding some degree of additional strain relief.
- Constructed from black Polyamide with a smooth matte finish.
- Sold in packs of 10.
- Functional Operating Temp.: –40 to 90°C/–40 to 194°F

BULLETIN: CE1

Gland – Cable Entry CCFO Lock



INDUSTRY STANDARDS

UL 508A Component Recognized;
File No. E61997
UL94 V-0 Flammability

APPLICATION

The Cable Entry CCFO Lock is considered an optional lock that is sold separately, but it is required for UL compliance. The Lock ensures that the Grommets cannot be pushed out of the frame without the use of tools.

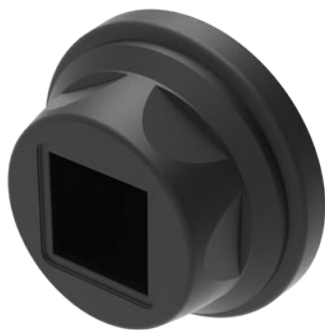
Catalog Number	Description	Package Quantity
CCFLO01	Locking frame for CCFO	20

FEATURES

- The Cable Entry CCFO Lock is used with the CCFO Cable Entry solution, where the associated gland accessories install from outside the enclosure.
- The CCFO Lock ensures UL compliance of the Cable Entry solution, while also adding some degree of additional strain relief.
- Constructed from black Polyamide with a smooth matte finish.
- Sold in packs of 20.
- Functional Operating Temp.: -40 to 90°C/-40 to 194°F

BULLETIN: CE1

Spare Parts – Round Modular Frame



INDUSTRY STANDARDS

UL 508A Component Recognized;
File No. E61997
UL94 V-0 Flammability

APPLICATION

The Cable Entry Round Frame is included standard in the Cable Entry Round Modular solution, so the below series of items are spare/replacement parts.

Catalog Number	Mating Locking Adapters	Counter Nut	Grommets Accepted	Package Quantity
CCFR2032	CCFRM20A, CCFRM25A, or CCFRM32A	CCFRM20NUT, CCFRM25NUT, or CCFRM32NUT	Single Small Grommet only	5
CCFR4063	CCFRM40A, CCFRM50A, or CCFRM63A	CCFRM40NUT, CCFRM50NUT, or CCFRM63NUT	Multiple Grommet combinations	5

FEATURES

- The Round Frame accepts grommets and inlays to serve as the principle cable management component within the Cable Entry Round Modular solution; the Frame mates with the Locking Adapter and Counter Nut.
- The Round Frame is being offered as a spare/replacement part: CCFR Locking Adapter and Counter Nut required to form round modular solution, all items sold separately unless purchasing Modular Solution.
- Constructed from black TPE plastic with a smooth matte finish.
- Sold in packs of 5.
- Functional Operating Temp.: -40 to 90°C/-40 to 194°F

BULLETIN: CE1

Spare Parts – Round Modular Locking Adapter



INDUSTRY STANDARDS

UL 508A Component Recognized;
File No. E61997
UL94 V-0 Flammability

APPLICATION

The Cable Entry Locking Adapter is included standard in the Cable Entry Round Modular solution, so the below series of items are spare/replacement parts.

FEATURES

- The Locking Adapter is a two-piece solution that mates with the Round Frame and Counter Nut: threading inside said Round Frame, extending through the enclosure, and accepting the Counter Nut from inside the enclosure.
- The Locking Adapter is being offered as a spare/ replacement part: CCFR Frame and Counter Nut required to form round modular solution, all items sold separately unless purchasing Modular Solution.
- Constructed from black TPE plastic with a smooth matte finish.
- Sold in packs of 5.
- Functional Operating Temp.: -40 to 90°C/-40 to 194°F

BULLETIN: CE1

Catalog Number	Mating Counter Nut	Round Frame	Package Quantity
CCFRM20A	CCFRM20NUT	CCFR2032	5
CCFRM25A	CCFRM25NUT	CCFR2032	5
CCFRM32A	CCFRM32NUT	CCFR2032	5
CCFRM40A	CCFRM40NUT	CCFR4063	5
CCFRM50A	CCFRM50NUT	CCFR4063	5
CCFRM63A	CCFRM63NUT	CCFR4063	5

Spare Parts – Round Modular Counter Nut



INDUSTRY STANDARDS

UL 508A Component Recognized;
File No. E61997
UL94 V-0 Flammability

APPLICATION

The Cable Entry Counter Nut is included standard in the Cable Entry Round Modular solution, so the below series of items are spare/replacement parts.

FEATURES

- The Counter Nut is a two-piece solution that mates with the Locking Adapter, threading in place from inside the enclosure.
- The Counter Nut is being offered as a spare/replacement part: CCFR Frame and Locking Adapter required to form round modular solution, all items sold separately unless purchasing Modular Solution.
- Constructed from black TPE plastic with a smooth matte finish.
- Sold in packs of either 5 or 10.
- Functional Operating Temp.: -40 to 90°C/-40 to 194°F

BULLETIN: CE1

Catalog Number	Mating Locking Adapters	Round Frame	Package Quantity
CCFRM20NUT	CCFRM20A	CCFR2032	10
CCFRM25NUT	CCFRM25A	CCFR2032	10
CCFRM32NUT	CCFRM32A	CCFR2032	10
CCFRM40NUT	CCFRM40A	CCFR4063	5
CCFRM50NUT	CCFRM50A	CCFR4063	5
CCFRM63NUT	CCFRM63A	CCFR4063	5

Hole Seal – Cable Entry Sealing Plug



FEATURES

- The Sealing Plugs seal errant or unnecessary pierced holes in the Cable Entry Membrane solution (CEP).
- Plugs seal to a depth of 18 mm (0.70 in).
- Constructed from white Polyamide with a smooth matte finish.
- Sold in packs of 25.
- Functional Operating Temp.: –40 to 90°C/–40 to 194°F

BULLETIN: CE1

INDUSTRY STANDARDS

UL94 V-0 Flammability;
File No. E61997

IP66; NEMA 1, 12, 4X (indoor only)

CE

APPLICATION

The Cable Entry Sealing Plugs function to seal holes pierced in the Cable Entry Membrane solution (CEP) to maintain the IP-rating of said solution.

Catalog Number	Description	Plug Diameter (mm)	Plug Diameter (in.)	Package Quantity
CEAS02	Sealing plug for CEP 2 mm	2	0.08	25
CEAS03	Sealing plug for CEP 3 mm	3	0.12	25
CEAS04	Sealing plug for CEP 4 mm	4	0.16	25
CEAS05	Sealing plug for CEP 5 mm	5	0.20	25
CEAS06	Sealing plug for CEP 6 mm	6	0.24	25
CEAS07	Sealing plug for CEP 7 mm	7	0.28	25
CEAS08	Sealing plug for CEP 8 mm	8	0.31	25
CEAS09	Sealing plug for CEP 9 mm	9	0.35	25
CEAS10	Sealing plug for CEP 10 mm	10	0.39	25
CEAS11	Sealing plug for CEP 11 mm	11	0.43	25
CEAS12	Sealing plug for CEP 12 mm	12	0.47	25
CEAS13	Sealing plug for CEP 13 mm	13	0.51	25
CEAS14	Sealing plug for CEP 14 mm	14	0.55	25
CEAS15	Sealing plug for CEP 15 mm	15	0.59	25
CEAS16	Sealing plug for CEP 16 mm	16	0.63	25
CEAS17	Sealing plug for CEP 17 mm	17	0.67	25
CEAS22	Sealing plug for CEP 22 mm	22	0.87	25

Hole Seal – Cable Entry Blind Cover



FEATURES

- The Blind Cover seals an errant or unnecessary rectangular hole that would accept a Cable Entry CCF.
- Cover secures via screw fixation.
- Constructed from black TPE plastic with a smooth matte finish.
- Sold in packs of 10.
- Operating Temperature: -40 to 120°C/-40 to 248°F

BULLETIN: CE1

INDUSTRY STANDARDS

File No. E61997
UL94 V-0 Flammability

IP66; NEMA 1, 12, 4X (indoor only)

CE

APPLICATION

The Cable Entry Blind Cover functions to seal a Cable Entry CCF solution rectangular hole.

Catalog Number	Description	Height (mm)	Height (in.)	Width (mm)	Width (in.)	Depth (mm)	Depth (in.)	Package Quantity
CEAB816	Blind cover CCFx816	55	2.17	126	4.96	11.5	0.45	10
CEAB1024	Blind cover CCFx1024	55	2.17	126	4.96	11.5	0.45	10

Tool – Cable Entry Actuation



FEATURES

- Tool functions in the precise installation or removal of grommets; channel present to support installed wire/cable.
- Ergonomic design reduces stress on fingers/hand experienced when repeatedly installing grommets.
- Constructed from recycled Polyamide with an orange, smooth matte finish.
- Sold individually.

BULLETIN: CE1

APPLICATION

The Cable Entry Actuation Tool supports the installation or removal of grommets from the frame.

Catalog Number	Description
CEAT01	Actuating tool for grommet installation/removal

Tool – Cable Entry Rectangular Hole Punch



FEATURES

- Tool functions in the generation of a rectangular through-hole, free from chips and splintering, to support installation of CCF or CEP cable entry solutions.
- Built-in punch hole marking tips can be used to mark drill points for application of through-holes for cable entry screw fixation.
- Mild steel punch with a black, mill finish.
- Sold individually.
- Caution: use on stainless steel is not recommended as it will cause premature wear.

BULLETIN: CE1

APPLICATION

The Cable Entry Rectangular Hole Punch produces a hole for the installation of the rectangular cable entry solutions of CCF and CEP.

Catalog Number	Description/Usage	Cutout Produced (mm/in.)
CEAP14	Hole punch CCFx14	46 x 46 1.81 x 1.81
CEAP610	Hole punch CCFx610	46 x 68.5 1.81 x 2.70
CEAP816	Hole punch CCFx816	46 x 91 1.81 x 3.58
CEAP1024	Hole punch CCFx1024	46 x 113.5 1.81 x 4.47
CEAP01–CEP	Hole punch CEPx	36 x 112 1.42 x 4.41



Our powerful portfolio of brands:

CADDY ERICO HOFFMAN ILSCO SCHROFF TRACHTE