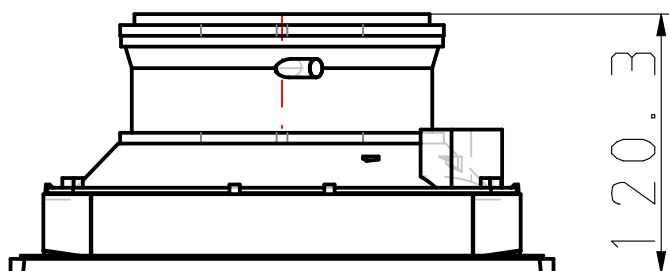
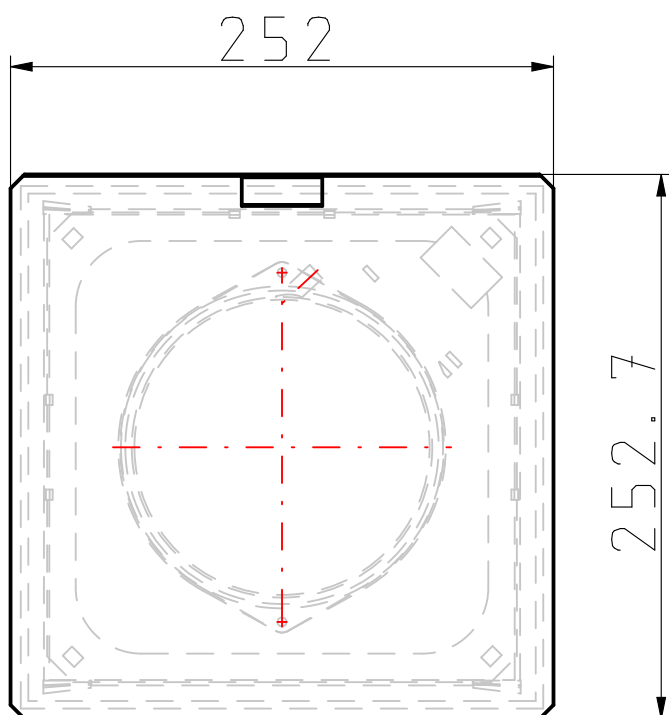
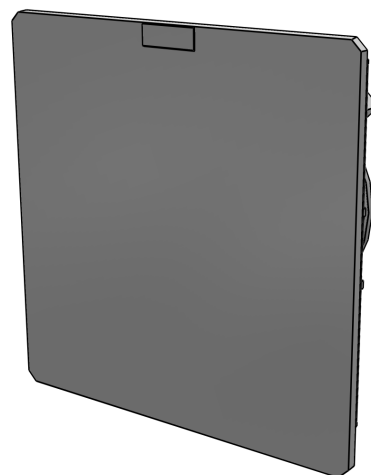


ITEM (Item no.)	EF300R5
DETAIL ()	low
INFO (Info PDF)	Info PDF
DES (Description)	Filter Fan Air flow 256 m ³ /h
MAT (Material)	Thermoplastic
OV (Operating voltage)	230 V AC, 50/60 Hz
IP (Protection)	IP 54 TYPE 12
BT (Bearing type)	Ball
CON (Connection)	Spring type
I (Current / A)	0.32/0.26
N (Noise / dB)	33
FAF (Free air flow / m ³ /h)	256
AF (EF+EFA Air flow / m ³ /h)	201/223
CONT (Connection Type)	3
UA (Unimpeded airflow / m ³ /h)	223/247
FM (Filter mat / EN779)	G4
FE (Filtration efficiency / %)	>90
SE (Service life L10 / hl)	40 000
CO (Cut-out / mm)	223 x 223
PO (Power / W)	45/39



CE EAC