

S13 METRIC PARALLEL BOLT COUPLER, PLAIN, WORLDWIDE DESIGN



CERTIFICATIONS



FEATURES

Provides continuity between reinforcing bar and ISO® 965 metric all-thread rod or bolts

May be used to anchor load-bearing equipment to foundations, columns or walls

Machined from non-weldable grades of material, but can be tack welded

SPECIFICATIONS

Finish: Plain
 Material: Steel
 Design Version: Worldwide (Globally Available Materials)

Catalog Number	Rebar Size, Metric	Rebar Size, US	Rebar Size, Canada	Hex Width(W)	Diameter(Ø)	Length(L)	A	Bar Depth(BD)	Thread Size(TS)	Thread Depth(TD)	Unit Weight	Certifications
EL10S1 3N	10 mm	#3		17 mm		53 mm	28 mm	18 mm	M12	14 mm	0.070 kg	AFCAB, DIBt, TZUS, ITB
EL12S1 3N	12 mm	#4	10M	22 mm		58 mm	33 mm	19 mm	M16	19 mm	0.120 kg	AFCAB, CARES, DIBt, TZUS, ITB

Catalog Number	Rebar Size, Metric	Rebar Size, US	Rebar Size, Canada	Hex Width(W)	Diameter(Ø)	Length(L)	A	Bar Depth(BD)	Thread Size(TS)	Thread Depth(TD)	Unit Weight	Certifications
EL14S1 3N	14 mm			27 mm		63 mm	35 mm	21 mm	M18	21 mm	0.120 kg	AFCAB, CARES, DIBt, TZUS, ITB
EL16S1 3N	16 mm	#5	15M	27 mm		68 mm	37 mm	24 mm	M20	23 mm	0.210 kg	AFCAB, CARES, DIBt, TZUS, ITB
EL18S1 3N	18 mm				35 mm	75 mm	39 mm	29 mm	M22	25 mm	0.400 kg	TZUS, ITB
EL20S1 3AN	20 mm	#6	20M		35 mm	83 mm	39 mm	35 mm	M22	25 mm	0.430 kg	
EL20S1 3BN	20 mm	#6	20M		35 mm	81 mm	37 mm	35 mm	M20	23 mm	0.440 kg	
EL20S1 3N	20 mm	#6	20M		35 mm	98 mm	55 mm	35 mm	M24	27 mm	0.480 kg	AFCAB, CARES, DIBt, TZUS, ITB
EL22S1 3N	22 mm	#7			40 mm	104 mm	58 mm	37 mm	M27	31 mm	0.670 kg	TZUS, ITB
EL12S1 3AN	12 mm	#4	10M		45 mm	86 mm	61 mm	19 mm	M30	33 mm	1.020 kg	
EL25S1 3BN	25 mm	#8	25M		45 mm	85 mm	37 mm	40 mm	M20	24 mm	0.800 kg	
EL25S1 3AN	25 mm	#8	25M		45 mm	103 mm	55 mm	40 mm	M24	27 mm	0.900 kg	
EL25S1 3N	25 mm	#8	25M		45 mm	110 mm	61 mm	40 mm	M30	33 mm	0.900 kg	AFCAB, CARES, DIBt, TZUS, ITB
EL28S1 3N	28 mm	#9	30M		50 mm	115 mm	64 mm	42 mm	M33	37 mm	1.160 kg	DIBt, TZUS, ITB
EL32S1 3AN	32 mm	#10			55 mm	115 mm	61 mm	45 mm	M30	33 mm	1.540 kg	
EL40S1 3CN	40 mm				65 mm	127 mm	61 mm	57 mm	M30	33 mm	2.440 kg	
EL32S1 3N	32 mm	#10			55 mm	125 mm	70 mm	45 mm	M39	43 mm	1.420 kg	AFCAB, CARES, DIBt, TZUS, ITB
EL34S1 3N	34 mm				55 mm	134 mm	70 mm	55 mm	M39	43 mm	1.520 kg	
EL30S1 3N	30 mm				55 mm	128 mm	67 mm	52 mm	M36	40 mm	1.620 kg	

Catalog Number	Rebar Size, Metric	Rebar Size, US	Rebar Size, Canada	Hex Width(W)	Diameter(Ø)	Length(L)	A	Bar Depth(BD)	Thread Size(TS)	Thread Depth(TD)	Unit Weight	Certifications
EL40S1 3BN	40 mm				65 mm	133 mm	67 mm	57 mm	M36	40 mm	2.410 kg	
EL40S1 3M33N	40 mm				64 mm	160 mm	74 mm	57 mm	M33	42 mm	2.900 kg	
EL50TS 13M33N	50 mm				64 mm	160 mm	74 mm	70 mm	M33	42 mm	2.400 kg	
EL36S1 3N	36 mm	#11	35M		65 mm	134 mm	73 mm	52 mm	M42	46 mm	2.340 kg	TZUS
EL38S1 3N	38 mm	#12			65 mm	139 mm	77 mm	53 mm	M45	49 mm	2.260 kg	
EL40S1 3N	40 mm				65 mm	143 mm	77 mm	57 mm	M45	49 mm	2.280 kg	AFCAB, CARES, DIBt, TZUS, ITB
EL40S1 3AN	40 mm				65 mm	146 mm	80 mm	57 mm	M48	52 mm	2.180 kg	
EL50TS 13N	50 mm				85 mm	171 mm	88 mm	70 mm	M56	60 mm	4.830 kg	CARES

Designed to Meet: AASHTO;ABNT NBR 8548:1984;ACI 318 Type 1 (125% Specified Yield);ACI 318 Type 2 (Specified Tensile);ACI 349;ACI 359;AS3600;BS EN 1992-1-1;BS EN 1992-2;CAN/CSA - N287.2/.3/.4;DIN EN 1992-1-1;Eurocode 2;IBC Type 1 (125% Specified Yield);IBC Type 2 (Specified Tensile);ISO 15835;NEN EN 1992-1-1;NF A 35-020-1;NF EN 1992-1-1;ÖNORM EN 1992-1-1;Sellafield Ltd. Std. ES_0_3110;US Army Corps of Engineers;CAN/CSA - A23.3

ADDITIONAL PRODUCT DETAILS

Bar dimensions and weights listed may vary by region. Coupler sizes not shown may be available by special order. Contact your nVent LENTON representative for more information.

Coupler supplied without bolt.

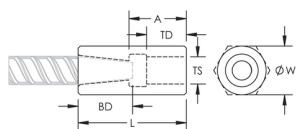
Bolt may be replaced by threaded rod of same class/grade.

All calculations based on a minimum bolt engagement equal to Thread Depth (TD).

System Capacity based on bolt to coupler connection. For rebar to coupler connection, refer to applicable building codes and approvals or contact your nVent LENTON representative.

Bolt-to-Coupler Capacity (kN)					
Part Number	Grade 4.8	Grade 5.8	Grade 8.8	Grade 10.9	Grade 12.9
EL10S13N	33.7	42.1	67.4	67.7	67.7
EL12S13AN	224.2	280.3	448.5	526.3	526.3
EL12S13N	62.7	78.3	109.8	109.8	109.8
EL14S13N	77.0	96.2	154.0	192.5	193.4
EL16S13N	97.9	122.4	162.0	162.0	162.0
EL18S13N	121.4	151.7	242.7	303.4	364.1
EL20S13AN	121.4	151.7	242.7	303.4	356.8
EL20S13BN	97.9	122.4	195.8	244.8	289.4
EL20S13N	141.0	176.3	282.0	332.3	332.3
EL22S13N	183.8	229.7	367.5	449.9	449.9
EL25S13AN	141.0	176.3	282.0	352.5	422.9
EL25S13BN	97.9	122.4	195.8	244.8	293.8
EL25S13N	224.2	280.3	448.5	560.5	560.5
EL28S13N	277.4	346.8	554.8	693.6	728.0
EL30S13N	326.7	408.4	653.4	816.7	890.7
EL32S13AN	224.2	280.3	448.5	560.6	672.7
EL32S13N	390.3	487.9	780.6	783.8	783.8
EL34S13N	390.3	487.9	780.6	783.8	783.8
EL36S13N	448.4	560.5	896.7	1120.9	1197.1
EL38S13N	522.4	653.0	1044.8	1054.8	1054.8
EL40S13AN	589.3	736.6	1178.5	1312.4	1312.4
EL40S13BN	326.7	408.4	653.4	816.7	980.1
EL40S13CN	224.2	280.3	448.5	560.6	672.7
EL40S13M33N	522.4	653.0	1044.8	1054.8	1054.8
EL40S13N	522.4	653.0	1044.8	1054.8	1054.8
EL50TS13M33N	812.0	1015.0	1624.0	2030.0	2168.3
EL50TS13N	812.0	1015.0	1624.0	2030.0	2168.3

DIAGRAMS



WARNING

nVent products shall be installed and used only as indicated in nVent's product instruction sheets and training materials. Instruction sheets are available at www.nvent.com and from your nVent customer service representative. Improper installation, misuse, misapplication or other failure to completely follow nVent's instructions and warnings may cause product malfunction, property damage, serious bodily injury and death and/or void your warranty.

North America

+1.800.753.9221

Option 1 – Customer Care

Option 2 – Technical Support

Europe

Netherlands:

+31 800-0200135

France:

+33 800 901 793

Europe

Germany:

800 1890272

Other Countries:

+31 13 5835404

APAC

Shanghai:

+ 86 21 2412 1618/19

Sydney:

+61 2 9751 8500



Our powerful portfolio of brands:
nVent.com CADDY ERICO HOFFMAN RAYCHEM SCHROFF
TRACER