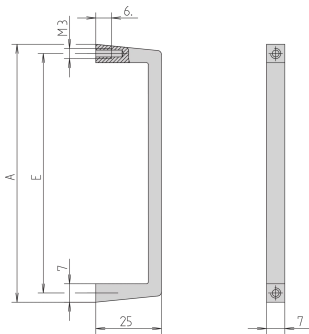


# Front Handle, Width 7 mm

## Power Utilities



Slim Aluminium profile front handle, 7 mm. The assembly of the handle will be done from the rear side.

## CERTIFICATIONS



## FEATURES

Static load-carrying capacity 10 kg/pair

The assembly of the handle will be done from the rear side

## SPECIFICATIONS

Table 1/2

Catalog Number	Package Quantity	Handle Type	Color	Material	Product Family	Product Type
10501-001	1	Straight	Silver	Aluminum	EuropacPRO, MultipacPRO	Handle
10501-002	1	Straight	Silver	Aluminum	EuropacPRO, MultipacPRO	Handle

Table 2/2

Catalog Number	Static Load	Width	Works With
----------------	-------------	-------	------------

10501-001	10 kgf	7 mm	Subracks, Chassis, Front Panels
10501-002	10 kgf	7 mm	Subracks, Chassis, Front Panels

ADDITIONAL PRODUCT DETAILS

Please take into consideration that deliveries may be carried out in the stated SPQs (SPQ, e.g. 5 pieces, 10 pieces, 50 pieces, etc.). Differing order quantities (e.g. 2 pieces) may be changed to the next possible delivery quantity = Standard Pack Quantity.

WARNING

nVent products shall be installed and used only as indicated in nVent's product instruction sheets and training materials. Instruction sheets are available at [www.nvent.com](http://www.nvent.com) and from your nVent customer service representative. Improper installation, misuse, misapplication or other failure to completely follow nVent's instructions and warnings may cause product malfunction, property damage, serious bodily injury and death and/or void your warranty.



Our powerful portfolio of brands:

CADDY   ERICO   HOFFMAN   ILSCO   SCHROFF   TRACHTE