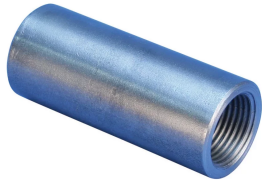


# A12 Standard Coupler, Modified



This coupler is modified to specifically meet the requirements of the Sellafield Engineering Standard ES\_0\_3110, CARES Appendix TA1-C, Class B and CARES Appendix TA1-C, Class A (when combined with nVent LENTON Plus)

## FEATURES

Designed to splice the same diameter bars where the second bar can be rotated and is not restricted in its axial direction

Slim design maintains concrete cover

Installs quickly and easily

## SPECIFICATIONS

Table 1/2

Catalog Number	Material	Finish	Design Version	Rebar Size, Metric	Diameter (Ø)	Длина мм (L)
EL50TA12X0285N	Сталь	Plain	Worldwide (Globally Available Materials)	50 mm	70 mm	285mm

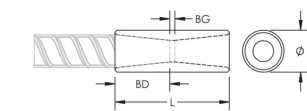
Table 2/2

Catalog Number	Bar Depth (BD)	Bar Gap (BG)	Unit Weight
EL50TA12X0285N	70mm	145mm	6.27 kg

**Designed to Meet:**

AASHTO;ABNT NBR 8548:1984;ACI 318 Type 1 (125% Specified Yield);ACI 318 Type 2 (Specified Tensile);ACI 349;ACI 359;AS3600

DIAGRAMS



WARNING

nVent products shall be installed and used only as indicated in nVent's product instruction sheets and training materials. Instruction sheets are available at [www.nvent.com](http://www.nvent.com) and from your nVent customer service representative. Improper installation, misuse, misapplication or other failure to completely follow nVent's instructions and warnings may cause product malfunction, property damage, serious bodily injury and death and/or void your warranty.

North America

+1.800.753.9221  
Option 1 – Customer Care  
Option 2 – Technical  
Support

Europe

Netherlands:  
+31 800-0200135  
France:  
+33 800 901 793

Europe

Germany:  
800 1890272  
Other Countries:  
+31 13 5835404

APAC

Shanghai:  
+ 86 21 2412 1618/19  
Sydney:  
+61 2 9751 8500



Our powerful portfolio of brands:

CADDY   ERICO   HOFFMAN   ILSCO   SCHROFF   TRACHTE