

nVent ERIFLEX Flexbus Firestop Block FBB



CERTIFICATIONS



FEATURES

Highly-elastic moldable block

Easy access for difficult-to-reach openings

Age, smoke and damp resistant

Re-enterable and repairable

Excellent adhesion

No backing material required

F-rating / E-rating up to 2 hours

T-rating / I-rating up to 2 hours

SPECIFICATIONS

Width (W): 450 mm Max

Height (H): 500 mm Max

Table 1/2

| Catalog Number | Article Number | Color | A | B | C | Complies With |
|----------------|----------------|-------|---|---|---|---------------|
|----------------|----------------|-------|---|---|---|---------------|

| | | | | | | |
|---------------------|--------|-------------------|--------|--------|-------|--|
| FLEXFIREBLOC K | 508151 | Красный, Brown | 200 mm | 144 mm | 60 mm | EN 13501-1, EN 1366-3 |
| FLEXFIREBLOC KUL | 508154 | Красный, Brown | 200 mm | 130 mm | 60 mm | ASTM E 84 (UL 723), ASTM E 814 (UL 1479) |

Table 2/2

| Catalog Number | Article Number | Density | Flammability Rating | Unit Weight | Certifications |
|---------------------|----------------|-----------------|---------------------|-------------|--|
| FLEXFIREBLOCK | 508151 | 240 - 300 kg/m³ | DIN 4102 (B2) | 0.56 kg | CE, RoHS, ESTI ERIFLEX FlexBus, FBS-EN |
| FLEXFIREBLOCKU L | 508154 | | | 0.56 kg | ESTI ERIFLEX FlexBus, cULus Classified, CE, RoHS |

ADDITIONAL PRODUCT DETAILS

The thickness of the penetration seal has to be minimum 200mm, depending on the fire resistance classification (see Annex J-1 of the ETA) in order to obtain EI120 fire-resistance.

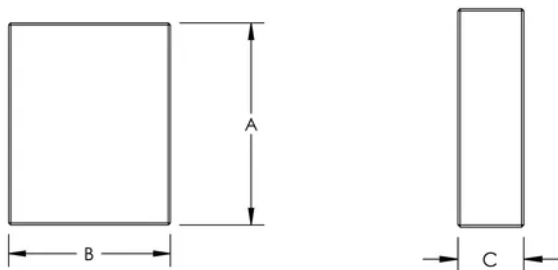
If 200mm is not possible, the FIB (intumescent wrap) needs to be used around the Flexbus Conductors and with 150mm width on both sides in order to reach EI120 fire resistance.

The width and height is referring to the maximum opening size of the penetration seal.

The total cross section of the installation (including insulation and conductor) must not be more than 60% of the opening size of the penetration seal.

The first support for the Flexbus Conductor has to be at a maximum 200mm measured from the surface of the penetration seal.

DIAGRAMS



WARNING

nVent products shall be installed and used only as indicated in nVent's product instruction sheets and training materials. Instruction sheets are available at www.nvent.com and from your nVent customer service representative. Improper

installation, misuse, misapplication or other failure to completely follow nVent's instructions and warnings may cause product malfunction, property damage, serious bodily injury and death and/or void your warranty.

North America

+1.800.753.9221
Option 1 – Customer Care
Option 2 – Technical
Support

Europe

Netherlands:
+31 800-0200135
France:
+33 800 901 793

Europe

Germany:
800 1890272
Other Countries:
+31 13 5835404

APAC

Shanghai:
+ 86 21 2412 1618/19
Sydney:
+61 2 9751 8500



Our powerful portfolio of brands:

CADDY ERICO HOFFMAN ILSCO SCHROFF TRACHTE