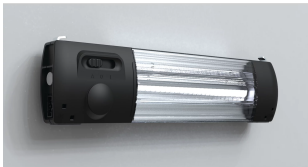


, EL900D



An LED light specially designed for nVent HOFFMAN enclosures. Tool-free assembly reduces the assembly time. Simple through wiring based on a plug and play system.

FEATURES

Description: LED enclosure light specially designed for nVent HOFFMAN enclosures. Fast and tool-free assembly thanks to a latching hook system designed to fit the 25mm hole pattern on nVent HOFFMAN enclosures. May be fitted horizontally or vertically.

Please be advised that when using the clamp mechanism to mount these lights, they cannot be installed on the top rail of ProLine and ProLine G2 cabinet frames.

SPECIFICATIONS

| | |
|------------------------|---------------|
| Color Temperature: | 4000K |
| Color: | Черный |
| Тип лампы: | Светодиод |
| Цвет света: | Neutral White |
| Material: | Plastic |
| Finish: | Smooth |
| Operating Temperature: | -20 to 55°C |

| Table 1/1 | | | | | | |
|----------------|-----------|-----------|------------|---------------|--------------|------------|
| Catalog Number | Высота мм | Ширина мм | Глубина мм | Socket Type | Light Output | Мощность W |
| EL1200D24V | 76mm | 315mm | 48mm | NA | 1200lm | 12W |
| EL1200M24V | 76mm | 315mm | 48mm | NA | 1200lm | 12W |
| EL1200DS | 76mm | 364mm | 48mm | SCHUKO, Тип F | 1200lm | 12W |
| EL1200DS-BF | 76mm | 364mm | 48mm | Тип E | 1200lm | 12W |
| EL1200DS-CH | 76mm | 364mm | 48mm | Type J | 1200lm | 12W |
| EL1200DS-GB | 76mm | 364mm | 48mm | Type G | 1200lm | 12W |
| EL1200DS-US | 76mm | 364mm | 48mm | Тип B | 1200lm | 12W |
| EL1200M | 76mm | 315mm | 48mm | NA | 1200lm | 12W |
| EL1200MS | 76mm | 364mm | 48mm | SCHUKO, Тип F | 1200lm | 12W |
| EL1200MS-BF | 76mm | 364mm | 48mm | Тип E | 1200lm | 12W |
| EL1200MS-CH | 76mm | 364mm | 48mm | Type J | 1200lm | 12W |
| EL1200MS-GB | 76mm | 364mm | 48mm | Type G | 1200lm | 12W |
| EL1200MS-US | 76mm | 364mm | 48mm | Тип B | 1200lm | 12W |
| EL900D | 76mm | 314mm | 48mm | NA | 900lm | 9W |
| EL900DS | 76mm | 364mm | 48mm | SCHUKO, Тип F | 900lm | 9W |

| Catalog Number | Высота мм | Ширина мм | Глубина мм | Socket Type | Light Output | Мощность W |
|----------------|-----------|-----------|------------|-------------|--------------|------------|
| EL900DS-BF | 76mm | 364mm | 48mm | Тип Е | 900lm | 9W |
| EL900DS-CH | 76mm | 364mm | 48mm | Type J | 900lm | 9W |
| EL900DS-GB | 76mm | 364mm | 48mm | Type G | 900lm | 9W |
| EL900DS-US | 76mm | 364mm | 48mm | Тип В | 900lm | 9W |

WARNING

nVent products shall be installed and used only as indicated in nVent's product instruction sheets and training materials. Instruction sheets are available at www.nvent.com and from your nVent customer service representative. Improper installation, misuse, misapplication or other failure to completely follow nVent's instructions and warnings may cause product malfunction, property damage, serious bodily injury and death and/or void your warranty.



Our powerful portfolio of brands:

CADDY ERICO HOFFMAN ILSCO SCHROFF TRACHTE