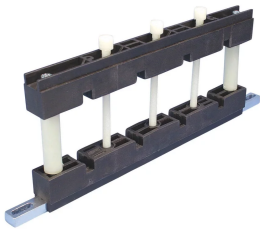


# Reinforced Compact Busbar Support with Neutral Circuit



## CERTIFICATIONS



## FEATURES

Compact design fits in 400 mm (15 3/4") deep panels

Mechanically reinforced

Includes mounting holes for direct fixing of protection screen

Installs quickly and easily

Halogen free

RoHS compliant

## SPECIFICATIONS

<b>Busbar Width:</b>	50 - 80 mm
<b>Max Working Voltage, IEC (Ui):</b>	1000;1500
<b>Complies With:</b>	IEC® 60439.1;IEC® 61439.1;IEC® 60695-2-11 (Glow Wire Test 960 °C)
<b>Flammability Rating:</b>	UL® 94V-0
<b>Working Temperature:</b>	-40 to 130 °C

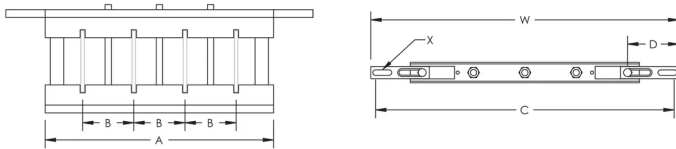
Table 1/2

Catalog Number	Article Number	Material	Typical Application Current Rating	Busbar Thickness	Busbars per Phase	Width (W)
RCBS1-6TN	552050	Aluminum, Glass Fibre Reinforced Polyamide	500 - 1200 A	6.35 mm	1	338 - 390 mm
RCBS1-10TN	552070	Aluminum, Glass Fibre Reinforced Polyamide	500 - 1600 A	10 mm	1	338 - 390 mm

Table 2/2

Catalog Number	Article Number	A	B	C	D	X
RCBS1-6TN	552050	290 mm	65 mm	325 - 377 mm	65 mm	6.5 x 23 mm
RCBS1-10TN	552070	290 mm	65 mm	325 - 377 mm	65 mm	6.5 x 23 mm

## DIAGRAMS



## WARNING

nVent products shall be installed and used only as indicated in nVent's product instruction sheets and training materials. Instruction sheets are available at [www.nvent.com](http://www.nvent.com) and from your nVent customer service representative. Improper installation, misuse, misapplication or other failure to completely follow nVent's instructions and warnings may cause product malfunction, property damage, serious bodily injury and death and/or void your warranty.

#### North America

+1.800.753.9221

Option 1 – Customer Care

Option 2 – Technical

Support

#### Europe

Netherlands:

+31 800-0200135

France:

+33 800 901 793

#### Europe

Germany:

800 1890272

Other Countries:

+31 13 5835404

#### APAC

Shanghai:

+ 86 21 2412 1618/19

Sydney:

+61 2 9751 8500



Our powerful portfolio of brands:

**CADDY**

**ERICO**

**HOFFMAN**

**ILSCO**

**SCHROFF**

**TRACHTE**