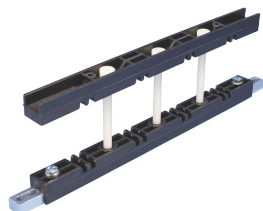


# Compact Busbar Support with Neutral Circuit



## CERTIFICATIONS



## FEATURES

Compact design fits in 400 mm (15 3/4") deep panels

Includes mounting holes for direct fixing of protection screen

Installs quickly and easily

Halogen free

RoHS compliant

## SPECIFICATIONS

<b>Busbar Width:</b>	25 - 80 mm
<b>Typical Application Current Rating:</b>	250 - 1600 A
<b>Max Working Voltage, IEC (Ui):</b>	1000;1500
<b>Complies With:</b>	IEC® 60439.1;IEC® 61439.1;IEC® 60695-2-11 (Glow Wire Test 960 °C)
<b>Flammability Rating:</b>	UL® 94V-0
<b>Working Temperature:</b>	-40 to 130 °C

Table 1/2

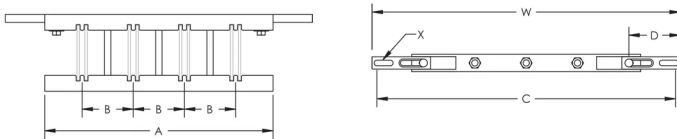
Catalog Number	Article Number	Material	Busbars per Phase	Busbar Thickness	Width (W)	A
----------------	----------------	----------	-------------------	------------------	-----------	---

CBS-B2-5TN	551151	Aluminum, Glass Fibre Reinforced Polyamide	1 - 2	5 mm	338 - 390 mm	290 mm
CBS-B1-10TN	551181	Aluminum, Glass Fibre Reinforced Polyamide	1	10 mm	338 - 390 mm	290 mm

Table 2/2

Catalog Number	Article Number	B	C	D	X
CBS-B2-5TN	551151	65 mm	325 - 377 mm	65 mm	6.5 x 23 mm
CBS-B1-10TN	551181	60 mm	325 - 377 mm	65 mm	6.5 x 23 mm

## DIAGRAMS



## WARNING

nVent products shall be installed and used only as indicated in nVent's product instruction sheets and training materials. Instruction sheets are available at [www.nvent.com](http://www.nvent.com) and from your nVent customer service representative. Improper installation, misuse, misapplication or other failure to completely follow nVent's instructions and warnings may cause product malfunction, property damage, serious bodily injury and death and/or void your warranty.

### North America

+1.800.753.9221  
Option 1 – Customer Care  
Option 2 – Technical  
Support

### Europe

Netherlands:  
+31 800-0200135  
France:  
+33 800 901 793

### Europe

Germany:  
800 1890272  
Other Countries:  
+31 13 5835404

### APAC

Shanghai:  
+ 86 21 2412 1618/19  
Sydney:  
+61 2 9751 8500



Our powerful portfolio of brands:

**CADDY ERICO HOFFMAN ILSCO SCHROFF TRACHTE**