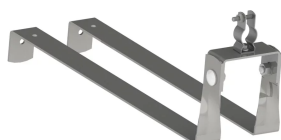


# ISONV Conductor Clamp for Interlocking Roof Tile



## FEATURES

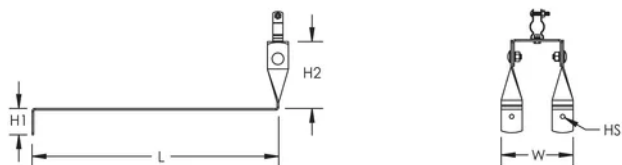
Secures ISONV Insulated Conductor to roof tiles

## SPECIFICATIONS

Table 1/1

Catalog Number	Material	Height 1 (H1)	Height 2 (H2)	Длина мм (L)	Width (W)	Hole Size (HS)
ISONVTILE	Stainless Steel 304 (EN 1.4301)	50mm	130mm	470mm	140 mm	8 mm

## DIAGRAMS



## WARNING

---

nVent products shall be installed and used only as indicated in nVent's product instruction sheets and training materials. Instruction sheets are available at [www.nvent.com](http://www.nvent.com) and from your nVent customer service representative. Improper installation, misuse, misapplication or other failure to completely follow nVent's instructions and warnings may cause product malfunction, property damage, serious bodily injury and death and/or void your warranty.

### North America

+1.800.753.9221

Option 1 – Customer Care

Option 2 – Technical

Support

### Europe

Netherlands:

+31 800-0200135

France:

+33 800 901 793

### Europe

Germany:

800 1890272

Other Countries:

+31 13 5835404

### APAC

Shanghai:

+ 86 21 2412 1618/19

Sydney:

+61 2 9751 8500



Our powerful portfolio of brands:

**CADDY**

**ERICO**

**HOFFMAN**

**ILSCO**

**SCHROFF**

**TRACHTE**