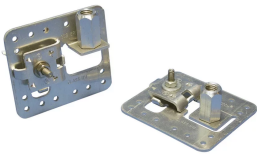


Air Terminal Base, Stamped Adjustable, Imperial Thread



CERTIFICATIONS



FEATURES

For use on flat, vertical or sloping surfaces

Air terminal support tab is field adjustable, eliminating the need for swivel adaptors

Available pre-configured for vertical applications

Install with adhesive or screw down fixings

Positive single bolt tension for multi-directional cable clamping

SPECIFICATIONS

Conductor Size, UL: Class 1 - Class 2 (4/0 Max)

Table 1/2

| Catalog Number | Material | Thread Size (TS) | Type | Hole Size (HS) | Глубина мм (D) | Height (H) |
|----------------|----------|------------------|------|----------------|----------------|------------|
| LPA30212 | Алюминий | 1/2" UNC | Flat | 7.14 mm | 88.9mm | 34.92 mm |

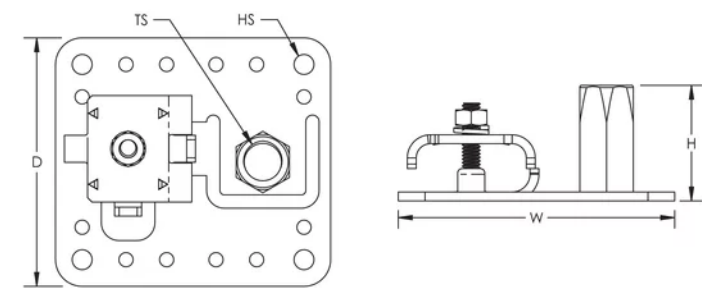
| CatalogNumber | Material | Thread Size (TS) | Type | Hole Size (HS) | Глубина мм(D) | Height (H) |
|---------------|---------------|------------------|------|----------------|---------------|------------|
| LPA30258 | Алюминий | 5/8" UNC | Flat | 7.14 mm | 88.9mm | 34.92 mm |
| LPC30212 | Bronze, Brass | 1/2" UNC | Flat | 7.14 mm | 88.9mm | 34.92 mm |
| LPC30258 | Bronze, Brass | 5/8" UNC | Flat | 7.14 mm | 88.9mm | 34.92 mm |
| LPC302M16 | Bronze, Brass | M16 | Flat | 7.14 mm | 88.9mm | 34.92 mm |

| Table 2/2 | |
|----------------|-----------|
| Catalog Number | Width (W) |
| LPA30212 | 101.6 mm |
| LPA30258 | 101.6 mm |
| LPC30212 | 101.6 mm |
| LPC30258 | 101.6 mm |
| LPC302M16 | 101.6 mm |

ADDITIONAL PRODUCT DETAILS

Vertical type bases are factory pre-configured for vertical mount applications.

DIAGRAMS



WARNING

nVent products shall be installed and used only as indicated in nVent's product instruction sheets and training materials. Instruction sheets are available at www.nvent.com and from your nVent customer service representative. Improper installation, misuse, misapplication or other failure to completely follow nVent's instructions and warnings may cause product malfunction, property damage, serious bodily injury and death and/or void your warranty.

⚠ WARNING: This product can expose you to chemicals including lead, which is known to the State of California to cause cancer and birth defects or other reproductive harm. For more information go to www.P65Warnings.ca.gov.

North America

+1.800.753.9221
Option 1 – Customer Care
Option 2 – Technical
Support

Europe

Netherlands:
+31 800-0200135
France:
+33 800 901 793

Europe

Germany:
800 1890272
Other Countries:
+31 13 5835404

APAC

Shanghai:
+ 86 21 2412 1618/19
Sydney:
+61 2 9751 8500



Our powerful portfolio of brands:

CADDY ERICO HOFFMAN ILSCO SCHROFF TRACHTE