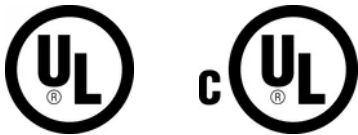


nVent CADDY Speed Link SLS with Hook



CERTIFICATIONS



FEATURES

Complete system includes wire, locking device and pre-assembled hook end fitting

Hooks to a wide range of nVent CADDY fasteners

Fastens to the building structure or hanging services by looping around and hooking to wire rope

Easy to remove for applications requiring maintenance

Spring latch helps provide secure connection

Insert cable through hole and use bottom side of hook as an end stop

Finger tightening of nut secures the locking device into position without tools

Installs in strut profiles without the need to insert fingers or tools into the strut

SPECIFICATIONS

Static Load Safety Factor: 5:1

Finish: Electrogalvanized

Complies With: SMACNA HVAC-DCS

Catalog Number	SLS2L10	SLS2L2	SLS2L3	SLS3L10	SLS3L3	SLS3L5
----------------	---------	--------	--------	---------	--------	--------

Article Number	196746	196742	196743	196752	196749	196750
Material	Steel Zinc Alloy Polypropylene	Steel Zinc Alloy Polypropylene	Steel Zinc Alloy Polypropylene	Steel Zinc Alloy Polypropylene	Steel Zinc Alloy Polypropylene	Steel Zinc Alloy Polypropylene
Wire Rope Diameter	2 mm	2 mm	2 mm	3 mm	3 mm	3 mm
Wire Rope Length	10m	2m	3m	10m	3m	5m
A	57 mm	57 mm	57 mm	57.6 mm	57.6 mm	57.6 mm
B	20 mm	20 mm	20 mm	23.2 mm	23.2 mm	23.2 mm
C	5.5 mm	5.5 mm	5.5 mm	6.1 mm	6.1 mm	6.1 mm
Height 1 (H1)	53mm	53mm	53mm	53mm	53mm	53mm
Height 2 (H2)	43.5mm	43.5mm	43.5mm	46.5mm	46.5mm	46.5mm
Thread Size (TS)	M8	M8	M8	M12	M12	M12
Width (W)	16 mm	16 mm	16 mm	20 mm	20 mm	20 mm
Hole Size (HS)	8 - 10 mm	8 - 10 mm	8 - 10 mm	12 - 14 mm	12 - 14 mm	12 - 14 mm
Slot Size (SS)	8 x 6.5 mm - 8 x 10 mm	8 x 6.5 mm - 8 x 10 mm	8 x 6.5 mm - 8 x 10 mm	12 x 10 mm - 12 x 14 mm	12 x 10 mm - 12 x 14 mm	12 x 10 mm - 12 x 14 mm
Thickness (T)	4 mm Max	4 mm Max	4 mm Max	6 mm Max	6 mm Max	6 mm Max
Static Load	270N	270N	270N	670N	670N	670N

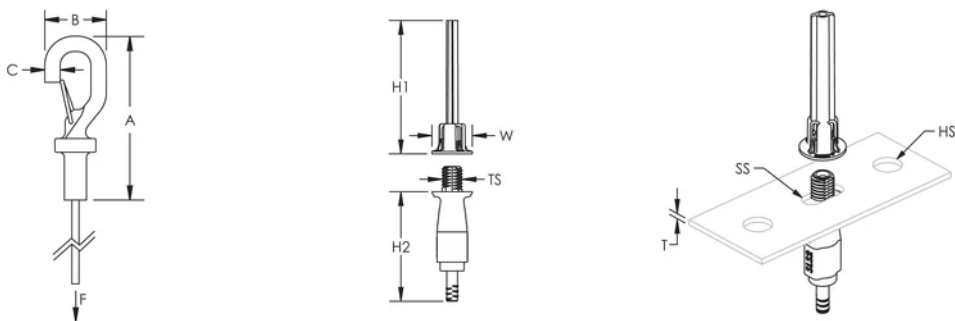
ADDITIONAL PRODUCT DETAILS

The 2 mm locking device is compatible with C-Channel Types E0 and E0L.

The 3 mm locking device is compatible with C-Channel Types E1, E2, E2L, E3, E4, E5, Strut Channel Type C, Slotted, Strut Channel Type A, Slotted, Strut Channel Type AS, Perforated, Strut Channel Type CC, Slotted, Strut Channel Type AA, Slotted.

Total load per wire on a multi-tier trapeze must not exceed static load.

DIAGRAMS



WARNING

nVent products shall be installed and used only as indicated in nVent's product instruction sheets and training materials. Instruction sheets are available at www.nvent.com and from your nVent customer service representative. Improper installation, misuse, misapplication or other failure to completely follow nVent's instructions and warnings may cause product malfunction, property damage, serious bodily injury and death and/or void your warranty.

North America

+1.800.753.9221
Option 1 – Customer Care
Option 2 – Technical
Support

Europe

Netherlands:
+31 800-0200135
France:
+33 800 901 793

Europe

Germany:
800 1890272
Other Countries:
+31 13 5835404

APAC

Shanghai:
+ 86 21 2412 1618/19
Sydney:
+61 2 9751 8500



Our powerful portfolio of brands:

CADDY ERICO HOFFMAN ILSCO SCHROFF TRACHTE

