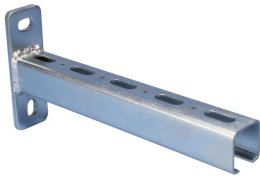


Cantilever Arm with E3 Channel



CERTIFICATIONS



FEATURES

Perforated, cold rolled

Slotted backplate

SPECIFICATIONS

Finish: Pregalvanized

Material: Сталь

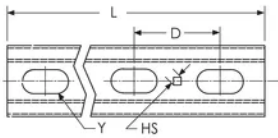
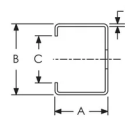
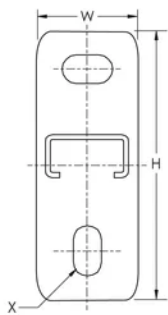
Table 1/1

Catalog Number	Article Number	Длина мм (L)
CE320H0250EG	585860	250mm
CE320H0500EG	585870	500mm
CE320H0750EG	585880	750mm

Thickness (T): 2 mm

Hole Size (HS):	5 mm
E:	6 mm
X:	11 x 18 mm
Y:	11 x 27 mm
C:	15.5 mm
A:	35 mm
B:	35 mm
Width (W):	40 mm
D:	50 mm
Height (H):	120 mm

DIAGRAMS



WARNING

nVent products shall be installed and used only as indicated in nVent's product instruction sheets and training materials. Instruction sheets are available at www.nvent.com and from your nVent customer service representative. Improper installation, misuse, misapplication or other failure to completely follow nVent's instructions and warnings may cause product malfunction, property damage, serious bodily injury and death and/or void your warranty.

North America

+1.800.753.9221

Option 1 – Customer Care

Option 2 – Technical

Support

Europe

Netherlands:

+31 800-0200135

France:

+33 800 901 793

Europe

Germany:

800 1890272

Other Countries:

+31 13 5835404

APAC

Shanghai:

+ 86 21 2412 1618/19

Sydney:

+61 2 9751 8500



Our powerful portfolio of brands:

CADDY

ERICO

HOFFMAN

ILSCO

SCHROFF

TRACHTE

