

nVent ERICO Ericontact Double Rail Contact



The nVent ERICO Ericontact series of rail contacts provides a superior quality connection to the rail web with a very low contact resistance. The contacts are quickly and easily fitted by means of an insertion tool, regardless of weather conditions. All nVent ERICO Ericontact components are manufactured according to high standards and norms. Tested to the most demanding requirements of the Rail Industry Standards, nVent ERICO Ericontact is the ideal solution for mechanically applied connections such as signal engineering, earthing (grounding), or traction return current.

The nVent ERICO Ericontact Double Rail Contact series offers connections on both sides of the rail web. This is a significant advantage when making interconnections in the station area, for example. The nVent ERICO Ericontact Double Contact is ideal solution in confined spaces. With a clearance of only 50 mm between the rail heads, the nVent ERICO Ericontact can still be inserted and the cable lug connected from both sides.

CARACTERISTICI

Easy to install

Very low contact resistance ($< 5 \mu\Omega$)

Same electrical resistance on the two sides of the contact

The contact surface of the two copper bushes is made inside the rail

SPECIFICAȚII

Table 1/2

Număr de catalog	Article Number	Rail Web Thickness	Rail Type	Drill Hole Diameter	Screw Diameter (Sc)	Screw Length (L)
DSK13518	715061	14.0 - 18.5 mm	136 lb RE, 141 lb AB, AS68, AS71	13.5mm	10	55mm
DSK1912	715060	12.0 - 13.4 mm	AS41, BHP42, RI59, RI60, S41	19mm	12	60mm

Număr de catalog	Article Number	Rail Web Thickness	Rail Type	Drill Hole Diameter	Screw Diameter (Sc)	Screw Length (L)
DSK191416	715057	13.5 - 16.5 mm	100 lb ARAB, 115 lb AREA, 127 lb NYC, 132 lb RE, 85 lb ASCE, AS50, AS60	19mm	12	60mm
DSK191416SS	715054	13.5 - 16.5 mm	100 lb ARAB, 115 lb AREA, 127 lb NYC, 132 lb RE, 85 lb ASCE, AS50, AS60	19mm	12	60mm
DSK191516L		13.5 - 16.5 mm	100 lb ARAB, 115 lb AREA, 127 lb NYC, 132 lb RE, 85 lb ASCE, AS50, AS60	19mm	12	70mm

Table 2/2

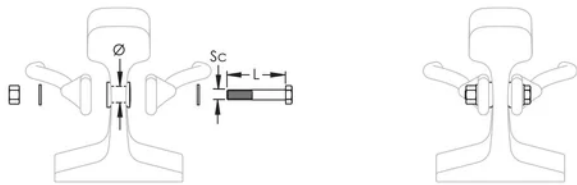
Număr de catalog	Article Number	Washer Inner Diameter	Washer Outer Diameter	Nut Material
DSK13518	715061		20mm	Electroplated Steel
DSK1912	715060	13mm	24mm	Stainless Steel 304
DSK191416	715057	13mm	24mm	Electroplated Steel
DSK191416SS	715054	13mm	24mm	Stainless Steel 304
DSK191516L		13mm	24mm	Electroplated Steel

DETALII SUPLIMENTARE DESPRE PRODUS

Kit includes: (1) hex-head stainless steel 304 bolt, (1) electrolytically tin-plated copper bush set (2 parts), (2) stainless steel 304 round washers, and (1) hexagonal stainless steel 304 nut or (1) electroplated steel nut (depending on contact type).

The washer and nut for DSK13518 are integrated into one piece.

DIAGRAMS



AVERTIZARE

Produsele nVent trebuie instalate și utilizate numai așa cum este indicat în fișele de instrucțiuni și materialele de formare ale nVent. Fișele de instrucțiuni sunt disponibile pe www.nvent.com și de la reprezentantul dvs. de servicii clienți nVent. O instalare incorectă, o utilizare abuzivă, o aplicare greșită sau orice altă lipsă de respectare completă a instrucțiunilor și avertismentelor nVent poate duce la defectarea produsului, la deteriorarea proprietății, la răniri corporale grave și moarte și/sau poate anula garanția dvs.

North America

+1.800.753.9221
Option 1 – Customer Care
Option 2 – Technical
Support

Europe

Netherlands:
+31 800-0200135
France:
+33 800 901 793

Europe

Germany:
800 1890272
Other Countries:
+31 13 5835404

APAC

Shanghai:
+ 86 21 2412 1618/19
Sydney:
+61 2 9751 8500



Portofoliul nostru puternic de mărci:

CADDY ERICO HOFFMAN ILSCO SCHROFF TRACHTE