

IBS Advanced Round Insulated Braided Conductor, Halogen Free

IBS Advanced Round Insulated Braided Conductor, Halogen Free are the ideal ready-to-install flexible wire replacement solution. Round IBS Advanced connect to the terminals of an electrical device without the need for additional accessories, such as angular connectors, spreaders, ring terminal connectors or extenders. Round IBS Advanced are available in cross sections of 120, 185 and 240 mm² (236.82, 365.10, and 473.65 kcmil), lengths from 330 to 1,030 mm (9.06" to 40.55"), and amperages ranging from 420 to 630 A.

Manufactured in an ISO 9001 2015 certified automated facility, round IBS Advanced is formed by weaving high-quality electrolytic copper wire to form a durable low voltage connector with maximum flexibility that allows for more compact power connections to electrical devices. The round IBS Advanced allows users to reduce the total size and weight of the installation, improving both design flexibility and assembly aesthetics.

The round IBS Advanced features pre-punched palms that are ready to connect out of the box. There are no lugs to purchase or install, making connections simpler and faster and eliminating faulty connections due to vibration or fatigue.

The advanced technology insulation is a high-resistance low smoke, halogen-free and flame retardant thermoplastic.

Round IBS Advanced does not generate corrosive gases and produces a relatively low smoke opacity in accordance with IEC 61034-2 and UL 2885. The low smoke characteristic improves the visibility conditions for people to be able to easily locate the emergency exit and also allows rescue workers to better assess an emergency situation. Round IBS Advanced means greater safety for individuals, less damage for your electrical equipment and less environmental impact.

The halogen-free feature enables a reduction in the quantity of toxic smoke. Round IBS Advanced does not contain any halogens, according to IEC 60754-1 and UL 2885, minimizing toxicity and making it the ideal product for use in enclosed spaces such as data centers, rail, and public facilities such as hospitals and schools. This also facilitates the use of round IBS Advanced in specific



applications such as submarines, switchboards and other enclosed environments that require a low emissions solution.

In addition to the above features, round IBS Advanced is also compliant with the UL 94-V0 testing standard and Glow wire test 960 °C. The flame retardant portion of the test illustrates the self-extinguish feature. This superior feature of round IBS Advanced is also shown by the Limiting Oxygen Index (LOI) at 30%. In case of fire, round IBS Advanced generates a limited quantity of smoke that is less damaging to your electrical equipment.

CERTIFICATIONS



CARACTERÍSTICAS

Resistant to vibration, improving reliability and performance

Insulated by high-resistance, halogen free, flame retardant and low smoke material

Tinned copper provides superior corrosion resistance

Improves assembly flexibility and aesthetics

Quick and easy installation

No additional cutting, stripping, crimping and punching needed

Conforms to NF EN 45545 obtaining an HL3 classification for chapters R22 and R23

Small wire diameter provides maximum flexibility

Dramatically smaller and more flexible than comparable cable based on ampacity

Better power density than cable with lower skin effect ratio

Reduces total installation cost

RoHS compliant

ESPECIFICAÇÕES

Diâmetro do fio:	0.15mm
Espessura do isolamento:	1.8 mm
Rigidez dielétrica:	20
Insulation Elongation:	500 %
Max Working Voltage, UL 67:	600
Max Working Voltage, IEC/UL 758	1000;1500
:	

Max Working Voltage, EN 50264-3-1:

6000V

Em conformidade com:

IEC® 60439.1; IEC® 60695-2-11 (Glow Wire Test 960 °C); IEC® 61439.1; IEC® 61439.1 Class II

Halogen Free Rating:

UL® 2885; IEC® 60754-1; IEC® 62821-1

Low Smoke Rating:

IEC® 61034-2; ISO 5659-2; UL® 2885

Acabamento:

Tinned

UV Resistance Rating:

UL® 854; UL® 2556

Certification Details:

UL® 67; UL® 758

Flammability Rating:

UL® 94V-0

Temperatura de trabalho:

-50 to 115 °C

Table 1/2

Número de catálogo	Número do artigo	Typical Application Current Rating	Material	Corte transversal	Largura do condutor	Espessura do condutor
IBSADV120-1030	534519	400 A	Copper, Elastômero Termoplástico	120mm ²	24 mm	10 mm
IBSADV120-330	534514	400 A	Copper, Elastômero Termoplástico	120mm ²	24 mm	10 mm
IBSADV120-430	534515	400 A	Copper, Elastômero Termoplástico	120mm ²	24 mm	10 mm
IBSADV120-530	534516	400 A	Copper, Elastômero Termoplástico	120mm ²	24 mm	10 mm
IBSADV120-630	534517	400 A	Copper, Elastômero Termoplástico	120mm ²	24 mm	10 mm
IBSADV120-830	534518	400 A	Copper, Elastômero Termoplástico	120mm ²	24 mm	10 mm
IBSADV185-1030	534525	500 A	Copper, Elastômero Termoplástico	185mm ²	24 mm	15 mm
IBSADV185-330	534520	500 A	Copper, Elastômero Termoplástico	185mm ²	24 mm	15 mm
IBSADV185-430	534521	500 A	Copper, Elastômero Termoplástico	185mm ²	24 mm	15 mm

Número de catálogo	Número do artigo	Typical Application Current Rating	Material	Corte transversal	Largura do condutor	Espessura do condutor
IBSADV185-530	534522	500 A	Copper, Elastômero Termoplástico	185mm ²	24 mm	15 mm
IBSADV185-630	534523	500 A	Copper, Elastômero Termoplástico	185mm ²	24 mm	15 mm
IBSADV185-830	534524	500 A	Copper, Elastômero Termoplástico	185mm ²	24 mm	15 mm
IBSADV240-1030	534531	630 A	Copper, Elastômero Termoplástico	240mm ²	32 mm	15 mm
IBSADV240-330	534526	630 A	Copper, Elastômero Termoplástico	240mm ²	32 mm	15 mm
IBSADV240-430	534527	630 A	Copper, Elastômero Termoplástico	240mm ²	32 mm	15 mm
IBSADV240-530	534528	630 A	Copper, Elastômero Termoplástico	240mm ²	32 mm	15 mm
IBSADV240-630	534529	630 A	Copper, Elastômero Termoplástico	240mm ²	32 mm	15 mm
IBSADV240-830	534530	630 A	Copper, Elastômero Termoplástico	240mm ²	32 mm	15 mm

Table 2/2

Número de catálogo	Número do artigo	Length (L)	A	Diâmetro (Ø)	Tamanho do orifício (HS)	Peso unitário
IBSADV120-1030	534519	1030mm	12 mm	27 mm	10.5 mm	1.6 kg
IBSADV120-330	534514	330mm	12 mm	27 mm	10.5 mm	0.52 kg
IBSADV120-430	534515	430mm	12 mm	27 mm	10.5 mm	0.66 kg
IBSADV120-530	534516	530mm	12 mm	27 mm	10.5 mm	0.8 kg

Número de catálogo	Número do artigo	Length (L)	A	Diâmetro (Ø)	Tamanho do orifício (HS)	Peso unitário
IBSADV120-630	534517	630mm	12 mm	27 mm	10.5 mm	0.94 kg
IBSADV120-830	534518	830mm	12 mm	27 mm	10.5 mm	1.22 kg
IBSADV185-1030	534525	1030mm	12 mm	31 mm	10.5 mm	2.3 kg
IBSADV185-330	534520	330mm	12 mm	31 mm	10.5 mm	0.82 kg
IBSADV185-430	534521	430mm	12 mm	31 mm	10.5 mm	1.07 kg
IBSADV185-530	534522	530mm	12 mm	31 mm	10.5 mm	1.26 kg
IBSADV185-630	534523	630mm	12 mm	31 mm	10.5 mm	1.48 kg
IBSADV185-830	534524	830mm	12 mm	31 mm	10.5 mm	1.9 kg
IBSADV240-1030	534531	1030mm	13 mm	36 mm	12.5 mm	3.2 kg
IBSADV240-330	534526	330mm	13 mm	36 mm	12.5 mm	1.07 kg
IBSADV240-430	534527	430mm	13 mm	36 mm	12.5 mm	1.39 kg
IBSADV240-530	534528	530mm	13 mm	36 mm	12.5 mm	1.64 kg
IBSADV240-630	534529	630mm	13 mm	36 mm	12.5 mm	1.93 kg
IBSADV240-830	534530	830mm	13 mm	36 mm	12.5 mm	2.46 kg

DETALHES ADICIONAIS DO PRODUTO

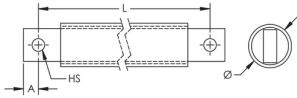
ΔT = Temperature of conductors – Internal temperature of panel.

This table indicates the temperature rise produced by chosen current in the given section. This calculation does not take into account the heat dissipation from the switch gear.

Distance between supports must not exceed 630 mm (17.8") according to IEC 61439-1.

Maximum Ampacity Ratings								
Cross Section (mm ² /kcmil)	ΔT 30° C (A)	ΔT 40° C (A)	ΔT 45° C (A)	ΔT 50° C (A)	ΔT 55° C (A)	ΔT 60° C (A)	ΔT 70° C (A)	2 Bar Current Coefficient
120/236.82	325	376	398	420	441	460	497	1.6
185/365.10	407	470	499	526	552	576	622	1.6
240/473.65	488	563	598	630	661	690	745	1.6

DIAGRAMAS



AVISO

Os produtos nVent devem ser instalados e utilizados apenas conforme indicado nas fichas de instrução do produto e materiais de treinamento da nVent. As fichas de instrução estão disponíveis em www.nVent.com e com nossos representantes de atendimento ao cliente nVent. A instalação inadequada, uso incorreto, aplicação incorreta ou outra falha qualquer em seguir completamente as instruções e avisos da nVent podem levar ao mau funcionamento do produto, danos à propriedade, lesões corporais graves e morte, e/ou anular sua garantia.

América do Norte

+1 800 753 9221
Opção 1 – Apoio ao cliente
Opção 2 – Assistência
técnica

Europa

Países Baixos:
+31 800-0200135
França:
+33 800 901 793

Europa

Alemanha:
800 1890272
Outros países:
+31 13 5835404

APAC

Xangai:
+ 86 21 2412 1618/19
Sydney:
+61 2 9751 8500



O nosso forte portefólio de marcas:

CADDY ERICO HOFFMAN ILSCO SCHROFF TRACHTE