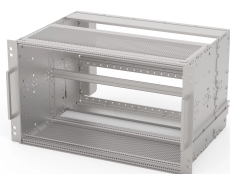


EuropacPRO 19" Subrack Kit for Railway, Shielded, SNCF, CompactPCI

Concessionárias de energia

Subrack for Railway applications, conform to SNCF Standard, shielded version for CompactPCI applications.



CERTIFICAÇÕES



RECURSOS

SNCF listed, EuropacPRO-fer, tested to NF F 61-005 and NF F 60-002

The 19" bracket is firmly fixed to the side panel (tox-cold welded) and is especially suited for high mechanical stresses (vibration resistance)

Lateral support bars to NFF standard facilitate insertion of subrack into the (cabinet) frame. The double 19" screwing position adds to additionally safety (NFF standard)

IP 20, in accordance with IEC 60529

EMC of approximately 40 dB at 1 GHz, 30 dB at 2 GHz, assuming that the front is covered with shielded front panels, testing in accordance with VG 95373 part 15

Aluminum construction

Modifications such as cutouts, different finishes or dimensions available

Supplied as space-saving flat-pack

ESPECIFICAÇÕES

Table 1/3						
Número do catálogo	Rack Height	Rack Width	Package Quantity	For Mounting	Board Depth	EMC Gasket Type
21500-046	6 U	84 HP	1	Backplane	160 mm	Textile
21500-047	3 U	84 HP	1	Backplane	160 mm	Textile
21500-069	3 U	36 HP	1	Backplane	160 mm	Textile
21500-072	6 U	36 HP	1	Backplane	160 mm	Textile

Table 2/3						
Número do catálogo	Shock and Vibration Tolerance	Handle Included	Instalação	Em conformidade com	Profundidade	EMC Shielding
21500-046	5 g (force)	Sim	Rack	IEC 60297-3-103, IEEE 1101.10, SNCF NFF 61005, SNCF NFF 60002	320 mm	Sim
21500-047	5 g (force)	Sim	Rack	IEC 60297-3-103, IEEE 1101.10, SNCF NFF 61005, SNCF NFF 60002	320 mm	Sim
21500-069	5 g (force)	Sim	Rack	IEC 60297-3-103, IEEE 1101.10, SNCF NFF 61005, SNCF NFF 60002	320 mm	Sim
21500-072	5 g (force)	Sim	Rack	IEC 60297-3-103, IEEE 1101.10, SNCF NFF 61005, SNCF NFF 60002	320 mm	Sim

Table 3/3			
Número do catálogo	Product Type	Carga estática	Certificações

21500-046	Subrack/Chassis	15 kgf	RoHS, SNCF
21500-047	Subrack/Chassis	15 kgf	RoHS, SNCF
21500-069	Subrack/Chassis	15 kgf	RoHS
21500-072	Subrack/Chassis	15 kgf	RoHS

ADDITIONAL PRODUCT DETAILS

Fer = ferroviaire = French Railways, 1 T = 4 HP = 20.32 mm Receptacle/mounting frame for subracks, stainless steel, 9 T or 21 T on request.

Version 9 T available on request; Test reports available online.

Guide rails color according to IEEE 1101.10 red = space for CPU-board; grey = space for peripheral boards; green = space for CompactPCI; 19"-power supplies 0,1" offset.

Individual configuration: broad range of variants in height, width and depth; guide rails for a wide variety of applications; interior options; accessories and mounting material.

AVISO

Os produtos nVent devem ser instalados e utilizados apenas conforme indicado nas fichas de instrução do produto e materiais de treinamento da nVent. As fichas de instrução estão disponíveis em www.nVent.com e com nossos representantes de atendimento ao cliente nVent. A instalação inadequada, uso incorreto, aplicação incorreta ou outra falha qualquer em seguir completamente as instruções e avisos da nVent podem levar ao mau funcionamento do produto, danos à propriedade, lesões corporais graves e morte, e/ou anular sua garantia.



Our powerful portfolio of brands:

CADDY ERICO HOFFMAN ILSCO SCHROFF TRACHTE