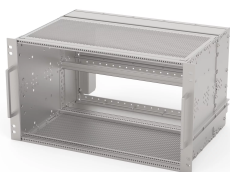


# EuropacPRO 19" Subrack Kit for Railway, Shielded, SNCF

## Servizi di distribuzione di energia

Subrack for Railway applications, conform to SNCF Standard.



### CERTIFICAZIONI



### CARATTERISTICHE

SNCF listed, EuropacPRO-fer, tested to NF F 61-005 and NF F 60-002

The 19" bracket is firmly fixed to the side panel (tox-cold welded) and is especially suited for high mechanical stresses (vibration resistance)

Lateral support bars to NFF standard facilitate insertion of subrack into the (cabinet) frame. The double 19" screwing position adds to additionally safety (NFF standard)

IP 20, in accordance with IEC 60529

EMC of approximately 40 dB at 1 GHz, 30 dB at 2 GHz, assuming that the front is covered with shielded front panels, testing in accordance with VG 95373 part 15

Aluminum construction

Modifications such as cutouts, different finishes or dimensions available

Supplied as space-saving flat-pack

## SPECIFICHE

Table 1/3

| Numero catalogo | Rack Height | Rack Width | Package Quantity | For Mounting | Board Depth | EMC Gasket Type |
|-----------------|-------------|------------|------------------|--------------|-------------|-----------------|
| 21500-028       | 6 U         | 84 HP      | 1                | Backplane    | 220 mm      | Textile         |
| 21500-030       | 3 U         | 84 HP      | 1                | Backplane    | 220 mm      | Textile         |
| 21500-068       | 3 U         | 36 HP      | 1                | Backplane    | 220 mm      | Textile         |
| 21500-071       | 6 U         | 36 HP      | 1                | Backplane    | 220 mm      | Textile         |

Table 2/3

| Numero catalogo | Shock and Vibration Tolerance | Handle Included | Montaggio | È conforme a                                    | Profondità | EMC Shielding |
|-----------------|-------------------------------|-----------------|-----------|---|------------|---------------|
| 21500-028       | 5 g (force)                   | Si.             | Rack      | IEC 60297-3-103, SNCF NFF 61005, SNCF NFF 60002 | 320 mm     | Si.           |
| 21500-030       | 5 g (force)                   | Si.             | Rack      | IEC 60297-3-103, SNCF NFF 61005, SNCF NFF 60002 | 320 mm     | Si.           |
| 21500-068       | 5 g (force)                   | Si.             | Rack      | IEC 60297-3-103, SNCF NFF 61005, SNCF NFF 60002 | 320 mm     | Si.           |
| 21500-071       | 5 g (force)                   | Si.             | Rack      | IEC 60297-3-103, SNCF NFF 61005, SNCF NFF 60002 | 320 mm     | Si.           |

Table 3/3

| Numero catalogo | Product Type    | Carico statico | Certificazioni |
|-----------------|-----------------|----------------|----------------|
| 21500-028       | Subrack/Chassis | 15 kgf         | RoHS, SNCF     |
| 21500-030       | Subrack/Chassis | 15 kgf         | RoHS, SNCF     |
| 21500-068       | Subrack/Chassis | 15 kgf         | RoHS           |

| Numero catalogo | Product Type    | Carico statico | Certificazioni |
|-----------------|-----------------|----------------|----------------|
| 21500-071       | Subrack/Chassis | 15 kgf         | RoHS           |

## ADDITIONAL PRODUCT DETAILS

Fer = ferroviaire = French Railways, 1 T = 4 HP = 20.32 mm.

Receptacle/mounting frame for subracks, stainless steel, 9 T or 21 T on request.

Individual configuration: broad range of variants in height, width and depth; guide rails for a wide variety of applications; interior options; accessories and mounting material.

## AVVERTENZA

AVVERTENZA: i prodotti nVent devono essere installati e usati solo secondo le indicazioni riportate nei fogli delle istruzioni del prodotto nVent e nei materiali di formazione. I fogli di istruzioni sono disponibili sul sito [www.nvent.com](http://www.nvent.com) e presso il vostro rappresentante locale dell'assistenza clienti di nVent. Un'installazione scorretta, l'uso improprio, l'applicazione errata o altre inosservanze delle istruzioni e delle avvertenze di nVent possono causare un malfunzionamento del prodotto, danni alle proprietà, lesioni corporee gravi e morte e/o l'annullamento della garanzia.



Our powerful portfolio of brands:

**CADDY ERICO HOFFMAN ILSCO SCHROFF TRACHTE**