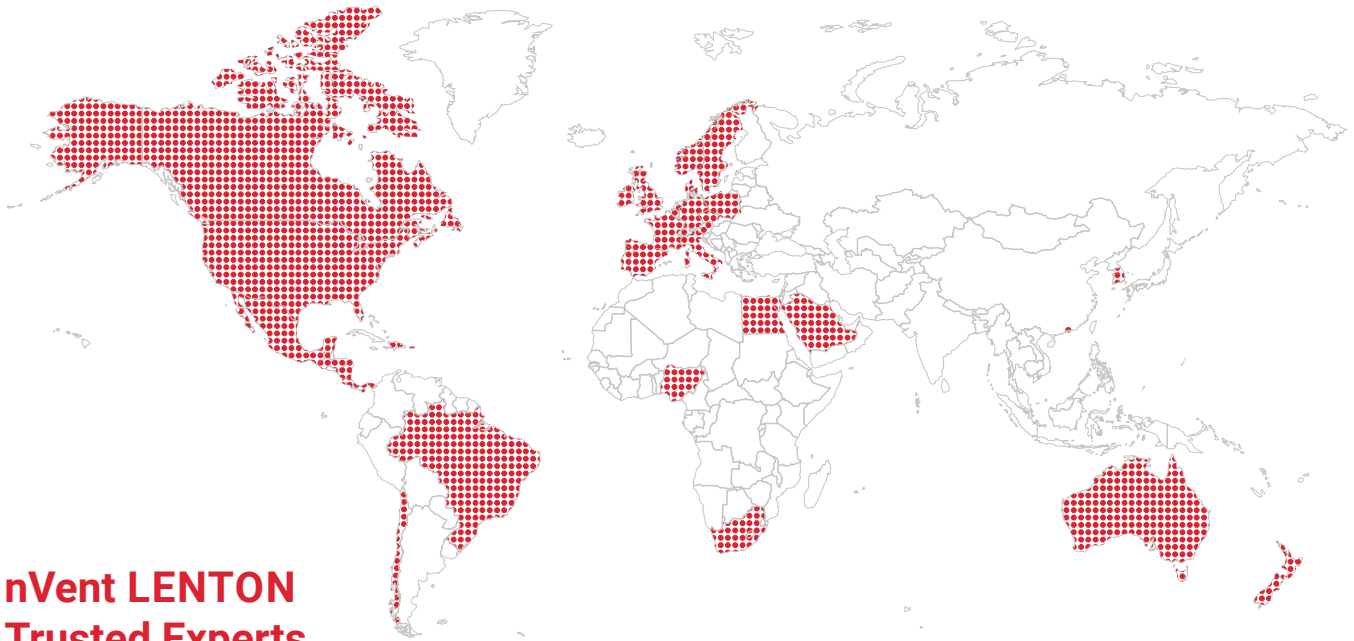


nVent LENTON Interlok Grout-Filled Precast Splicing Systems



Air Traffic Control Tower, Kansas City Airport



nVent LENTON Trusted Experts Across the Globe

nVent LENTON is constantly evolving product offerings to meet new regional needs. Reach out to your local nVent LENTON Sales Representative for more information.

nVent LENTON is a world-leading brand of advanced mechanical rebar splicing systems. Construction in precast concrete is an increasingly popular way to form reliable structures for construction across almost every industry and application. Structures previously made only with cast, in-situ concrete are now constructed using precast concrete. A successful prefab or precast concrete installation for your next job requires special rebar splicing systems that increase the structural integrity of precast concrete constructions.

A BETTER SOLUTION

nVent LENTON Interlok allows for load bearing applications such as columns, beams and shear walls to be efficiently incorporated into projects using segmental precast construction techniques.



NVENT LENTON MECHANICAL REBAR SPLICES: PROVEN AND TESTED



Rebar Splicing Specialists

Designed by nVent LENTON personnel who understand inherent rebar splicing issues.



Customer Safety

Our solutions are created with a Safety First mindset.



Meets Code Requirements

The most effective method of joining reinforcing bars and meeting the code requirements of national and international regulatory organizations.

Rebar Splicing Specialists for the Precast Construction Industry

As precast construction is increasingly used for a wide range of structures, demand for emulation of cast-in-place building performance has also risen. Grouted splices are frequently used in moment frame and diaphragm connection applications due to their ease of use and full-capacity rebar splice performance. Consequently, grouted splices have emerged as the designated solution for efficient precast splicing while maintaining full rebar continuity.

The nVent LENTON Interlok Grout-Fill Precast Splicing System can connect the full range of rebar sizes using superior-quality ductile iron sleeves and high-strength grout. This combination results in a full-strength, reliable splice that is forgiving to misalignment and highly efficient. Architects and engineers gain flexibility in the design and erection of precast concrete elements while reclaiming vital construction time, reducing costs, and improving productivity. Load-bearing applications such as columns, beams, and shear walls can now be systematically incorporated into projects using segmental construction techniques, where previously only structural steel or cast-in-place concrete would have been considered.



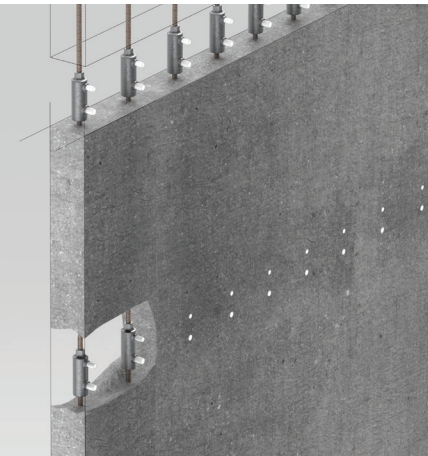
APPLICATIONS

- Columns to Foundations
- Panel to Panel
- Walls to Floor Slab
- Shear Walls to Foundations
- Architectural Panels

Column to Column



Shear Wall to Shear Wall



Why nVent LENTON Interlok

PRE-CAST SPLICING SYSTEM

nVent LENTON Interlok is engineered for use in precast construction. It is designed to provide structural integrity between load bearing precast concrete elements such as columns, beams, shear walls, and panels. nVent LENTON Interlok provides superior dynamic, seismic and ultimate strength performance for moment frame applications.

HOW TO INSTALL

Interlok Couplers are fastened to the rebar and placed into precast forms. This system incorporates either a tapered-thread or set screw and seal system, which creates a positive lock and reduces chances of contamination. With quick and easy alignment of the coupler onto the rebar, nVent LENTON Interlok provides a full-strength mechanical connection in both tension and compression. The splice is completed on site by inserting the exposed dowel of the adjoining structural member into the sleeve and filling the coupler with nVent LENTON Interlok HY15LM high-strength grout, either poured or pumped into the sleeve. The inlet and outlet ports on the sleeve accept commonly available rigid PVC or flexible plastic tubes. The complete splice provides load path continuity allowing precast structures to function as continuous members. A detailed installation guide is available at nVent.com/LENTON outlining correct installation, grout mixing and formwork mounting procedures.

INSTALLATION AND DESIGN BENEFITS

- Helps ensure structural integrity between the precast sections
- Provides load path continuity of the reinforcement, acting as one continuous bar
- Designed for all high-yield deformed rebar sizes
- Eliminates field welding damage to concrete
- Helps to overcome rebar misalignment problems in joining of precast concrete members
- Offers a higher strength connection between the precast elements than traditional joining methods
- Eliminates costly and unsightly patchwork
- No closure pours required between adjacent members
- Tensile loads are transferred through the rebar, and are not dependent on the compressive strength of the concrete
- Optimizes production time and is convenient and flexible to use



PRODUCT SPECIFICATION OPTIONS

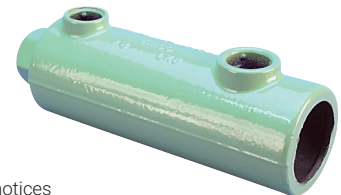
Taper-Threaded



No-Threaded



Durability Coatings



IMPORTANT NOTE: Prior to installation of any products, please read and understand the detailed instructions and safety notices provided in the nVent LENTON Interlok Instruction Manual.



See more information about
nVent LENTON Interlok Installation Guide
nVent.widen.net/s/8vblnzxbmw/pdf008 and nVent.widen.net/s/nmr55ccqrv/ipnalk0



nVent LENTON Projects

With Interlok Grout-Filled Precast Splicing System



**Hot and Cold
Temperature Additives**



**Seismic-Rated
Performance**



**Speedy
Installation**

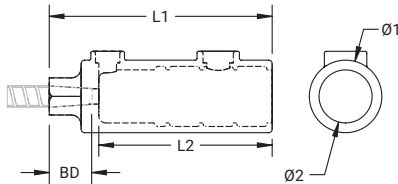


nVent BIM Library

- ✓ Appeal to clients with data-rich 3D modeling capabilities
- ✓ Enhanced Visualization: Create realistic projects in live time
- ✓ Clash detection quickly identifies and resolves issues, limiting errors on site and maximizing cost savings
- ✓ Design support and service when and where it's needed

Interlok Grout-Fill Couplers

nVENT LENTON INTERLOK STANDARD GROUT-FILL COUPLER, PLAIN



- Designed to splice the same diameter bars
- Smaller bars can be installed into the over-sized cavity end if required
- Over-sized cavity allows for greater field tolerance
- Taper-threaded end helps prevent movement of the reinforcing bars and eliminate misalignment
- Requires less grout than most competitive systems
- Digital model available in nVent BIM Library

Material: Cast Iron
Finish: Plain



Part Number	Rebar Size, US	Rebar Size, Canada	Diameter 1 Ø1	Diameter 2 Ø2	Length 1 L1	Length 2 L2	Bar Depth BD	Unit Weight
LK5	#5	15 M	2.56"	1.88"	7.88"	6.13"	0.86"	4.4 lb
LK16D	#5	15 M	2.31"	1.63"	7.91"	6.62"	0.96"	3.7 lb
LK6	#6	20 M	2.56"	1.88"	7.88"	6.13"	1.09"	4.3 lb
LK7	#7	–	2.56"	1.88"	7.88"	6.13"	1.26"	4.3 lb
LK8	#8	25 M	2.69"	2"	8.62"	7"	1.36"	4.7 lb
LK20D	#6	20 M	2.44"	1.75"	8.89"	7"	1.37"	4.4 lb
LK9	#9	30 M	2.81"	2.13"	9.75"	8"	1.49"	5.4 lb
LK25D	#8	25 M	2.69"	2"	8.98"	7"	1.57"	4.99 lb
LK10	#10	–	3"	2.31"	10.81"	9"	1.58"	6.3 lb
LK11	#11	35 M	3.13"	2.44"	12"	9.88"	1.68"	8 lb
LK36D	#11	35 M	3.19"	2.44"	12.34"	9.88"	2.04"	8.91 lb
LKT14	#14	45 M	3.69"	2.75"	15.19"	12.75"	2.2"	16 lb
LK40	–	–	3.69"	2.75"	15.19"	12.75"	2¼"	14 lb

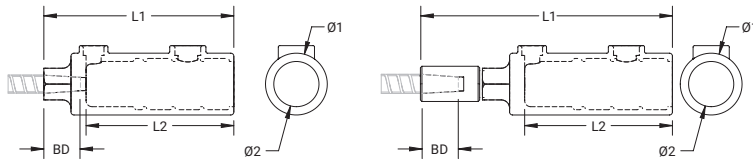
Bar dimensions and weights listed may vary by region. Coupler sizes not shown may be available by special order. Contact your nVent LENTON representative for more information.

Interlok Grout-Fill Couplers

nVENT LENTON INTERLOK TRANSITION GROUT-FILL COUPLER, PLAIN



- Designed to splice different diameter bars
- Over-sized cavity allows for greater field tolerance
- Taper-threaded end helps prevent movement of the reinforcing bars and eliminate misalignment
- Requires less grout than most competitive systems
- Digital model available in nVent BIM Library



Material: Cast Iron

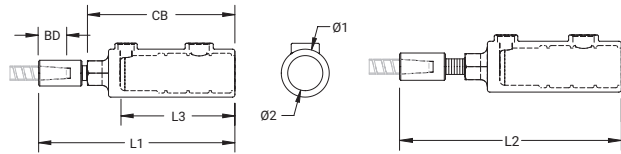
Finish: Plain

Part Number	Rebar Size, US	Rebar Size, Canada	Diameter 1 Ø1	Diameter 2 Ø2	Length 1 L1	Length 2 L2	Bar Depth BD	Unit Weight
LK86	#8, #6	25 M, 20 M	2.69"	2"	8.62"	7"	1.09	5 lb
LK87	#8, #7	–	2.69"	2"	8.62"	7"	1.26	4.8 lb
LK97	#9, #7	–	2.81"	2.13"	9.75"	8"	1.26	5.4 lb
LK98	#9, #8	30 M, 25 M	2.81"	2.13"	9.75"	8"	1.36	5.4 lb
LK109	#10, #9	–	3"	2.31"	10.81"	9"	1.49	8 lb
LK1110	#11, #10	–	3.13"	2.44"	12"	9.88"	1.58	8 lb
LK1410	#14, #10	–	3.69"	2.75"	15.19"	12.75"	1.58	16 lb
LK1411	#14, #11	45 M, 35 M	3.69"	2.75"	15.19"	12.75"	1.68	15.7 lb

Bar dimensions and weights listed may vary by region. Coupler sizes not shown may be available by special order. Contact your nVent LENTON representative for more information.

Interlok Grout-Fill Couplers

NVENT LENTON INTERLOK POSITION GROUT-FILL COUPLER



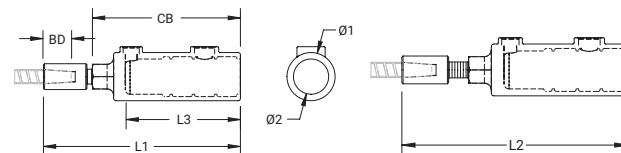
- Designed to splice the same diameter bars
- Smaller bars can be installed into the over-sized cavity end if required
- Positional feature allows the threaded coupler end to telescope out to close a gap between forms and to allow alignment of the grout tubes
- Over-sized cavity allows for greater field tolerance
- Taper-threaded end helps prevent movement of the reinforcing bars and eliminate misalignment
- Requires less grout than most competitive systems
- Digital model available in nVent BIM Library

Material: Cast Iron
Finish: Plain

Part Number	Rebar Size, US	Rebar Size, Canada	Diameter 1 Ø1	Diameter 2 Ø2	Length 1 L1	Length 2 L2	Length 3 L3	Bar Depth BD	Coupler Body CB	Unit Weight
LK6STHD	#6	20 M	2.56"	1.88"	10.44"	11.19"	6.13"	1.09	7.88	5.4 lb
LK11STHD	#11	35 M	3.13"	2.44"	15.31"	16.31"	9.88"	1.68	12	10.1 lb
LKT14STHD	#14	45 M	3.7"	2.76"	19.09"	19.88"	12.28"	2.2	15.2	18.26 lb

Bar dimensions and weights listed may vary by region. Coupler sizes not shown may be available by special order. Contact your nVent LENTON representative for more information.

NVENT LENTON INTERLOK POSITION TRANSITION GROUT-FILL COUPLER



- Designed to splice different diameter bars
- Positional feature allows the threaded coupler end to telescope out to close a gap between forms and to allow alignment of the grout tubes
- Over-sized cavity allows for greater field tolerance
- Taper-threaded end helps prevent movement of the reinforcing bars and eliminate misalignment
- Requires less grout than most competitive systems

Material: Cast Iron
Finish: Plain
Packaging: Standard

Part Number	Rebar Size, US	Rebar Size, Canada	Diameter 1 Ø1	Diameter 2 Ø2	Length 1 L1	Length 2 L2	Length 3 L3	Bar Depth BD	Coupler Body CB	Unit Weight
LK1110STHD	#11, #10	-	3.13"	2.44"	15.12"	16.12"	9.88"	1.58	12	10.1 lb
LK1411STHD	#14, #11	45 M, 35 M	3.69"	2.75"	17.94"	18.94"	12.75"	1.68	15.19	19 lb

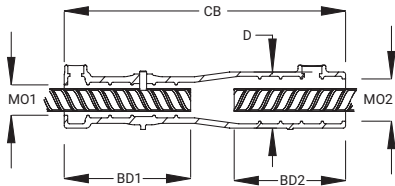
Bar dimensions and weights listed may vary by region. Coupler sizes not shown may be available by special order. Contact your nVent LENTON representative for more information.

Interlok Grout-Fill Couplers

nVENT LENTON INTERLOK NO-THREAD GROUT-FILL COUPLER, PLAIN



- No bar end preparation required
- Used to splice bars of the same or different diameters
- Compatible with nVent LENTON Interlok HY15LM Grout
- Design allows for high-performance installations
- Form-mounted stop prevents over-insertion of the primary rebar
- Digital model available in nVent BIM Library

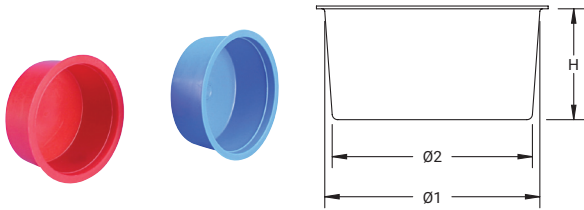


Material: Ductile Iron
Finish: Plain
100% U.S. Domestic Content: Yes

Part Number	Rebar Size, US	Rebar Size, Canada	Diameter Ø	Coupler Body CB	Bar Depth 1	Bar Depth 2	Mouth Opening 1	Mouth Opening 2	Unit Weight
LKNT20D	#6	20 M	2.38"	11.97"	6.34 – 6.72"	4.50 – 5.25"	1.19"	1.75"	4.9 lb
LKNT22D	#7	–	2.5"	13.53"	7.03 – 7.41"	5.25 – 6.13"	1.31"	1.88"	6.1 lb
LKNT25D	#8	25 M	2.66"	15.16"	7.78 – 8.16"	6 – 7"	1.44"	2"	7.5 lb
LKNT28D	#9	30 M	2.81"	16.88"	8.51 – 8.88"	6.77 – 8"	1.59"	2.13"	9.5 lb
LKNT32D	#10	–	3.13"	18.75"	9.38 – 9.75"	7.62 – 9"	1.77"	2.31"	14.5 lb
LKNT36D	#11	35 M	3.25"	20.54"	10.29 – 10.66"	8.46 – 9.88"	2.02"	2.44"	17.5 lb

Interlok Accessories

DUST CAP

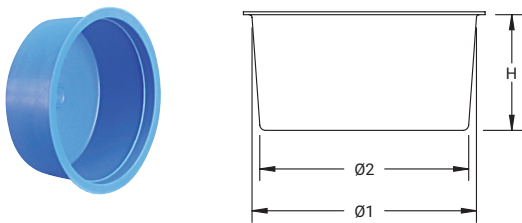


- Snug fit prevents the cap from falling out of the coupler
- Easy to install and remove

Material: Polyethylene

Part Number	Rebar Size, US	Rebar Size, Canada	Height H	Diameter 1 Ø1	Diameter 2 Ø2	Color
LK508	#8	25 M	0.75"	2.07"	1.98"	Red
LK509	#9	30 M	0.75"	2.18"	2.11"	Red
LK507	#5, #6, #7	15 M, 20 M	1"	1.94"	1.81"	Blue
LK510	#10	–	1"	2.33"	2.16"	Blue
LK511	#11	35 M	1"	2.47"	2.3"	Blue

INLET/OUTLET PLUG



- Designed to fit inside schedule 40 PVC pipe
- Easy to install and remove

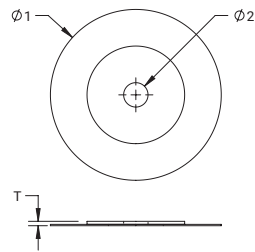
Color: Blue

Material: Polyethylene

Part Number	Type	Height H	Diameter 1 Ø1	Diameter 2 Ø2
LK501	Inlet	0.63"	0.85"	0.75"
LK502	Outlet	0.5"	0.64"	0.55"

Interlok Accessories

SEALING DISK

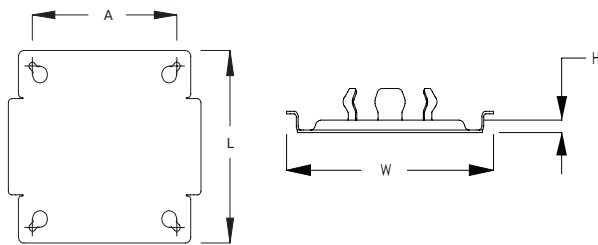
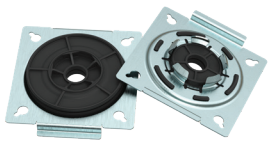


- Rubber seal is designed to fit tightly around the reinforcing bar
- Easy to install

Material: Steel, Neoprene

Part Number	Rebar Size, US	Rebar Size, Canada	Diameter 1 $\phi 1$	Diameter 2 $\phi 2$	Thickness T	Unit Weight
LK607	#5, #6, #7	15 M, 20 M	3.50"	0.5"	0.09"	0.1 lb
LK608	#8	25 M	3.63"	0.88"	0.09"	0.1 lb
LK609	#9	30 M	3.75"	1"	0.09"	0.1 lb
LK610	#10		4"	1.13"	0.09"	0.1 lb
LK611	#11	35 M	4.13"	1.13"	0.09"	0.1 lb
LK614	#14	45 M	4.13"	1.50"	0.09"	0.1 lb

nVENT LENTON INTERLOK FORM SAVER SEAL



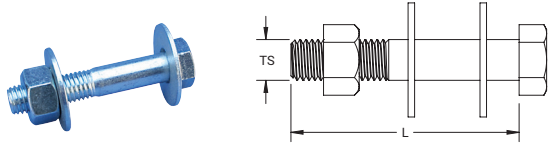
- Sturdy, spring-steel mounting flange
- Integrated rubber seal for grout cavity
- Easy snap-in installation
- Four keyholes for easy fastening using nails/screws
- Anchor tabs prevent dislodging in concrete
- Compatible with all nVent LENTON Interlok Grout-Fill Coupler variants

Material: Steel
Finish: Plain

Part Number	Length L	Width W	Height H	A	Color	Unit Weight
LKFSA16	4"	4.47"	0.4"	3.35"	Black	0.2 lb
LKFSA20	4"	4.47"	0.4"	3.35"	Yellow	0.2 lb
LKFSA22	4"	4.47"	0.4"	3.35"	Blue	0.2 lb
LKFSA25	4"	4.47"	0.4"	3.35"	Red	0.2 lb

Interlok Accessories

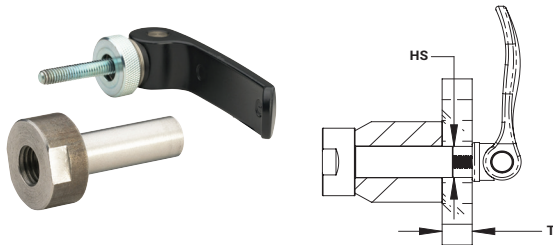
NVENT LENTON INTERLOK BOLTED FORM MOUNT



- Durable and reusable
- Standard bolt uses standard sockets and wrenches

Part Number	Material	Length L	Thread Size TS	Unit Weight
LK810	Steel	3.50"	5/8" UNC	0.7 lb

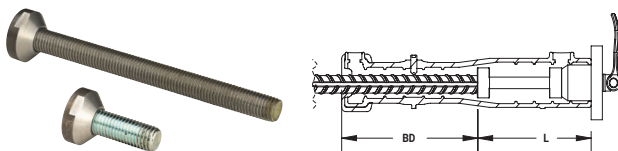
NVENT LENTON INTERLOK TOGGLE FORM MOUNT



- Durable and reusable
- Works with multiple form thicknesses and materials, including wood and steel

Part Number	Handle Length	Hole Size HS	Form Thickness FT	Unit Weight
LK815	2.38"	11.97"	0.5 - 1.5"	4.9 lb

NVENT LENTON INTERLOK NO-THREAD BAR POSITIONER

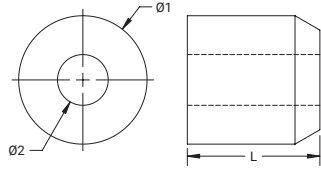


- Designed for use with the nVent LENTON Interlok No-Thread Grout-Fill Coupler
- Durable and reusable
- Ensures connection capacity
- Rigidly mounts to nVent LENTON Interlok Toggle Form Mount
- Digital model available in nVent BIM Library

Part Number	Rebar Size, Canada	Rebar Size, US	Bar Depth BD	Length L	Unit Weight
LKNT22BP	-	#7	7.59"	6.13"	1.7 lb
LKNT25BP	25 M	#8	8.34"	7"	1.8 lb
LKNT28BP	30 M	#9	9.07"	8"	1.9 lb
LKNT32BP	-	#10	9.94"	9"	2 lb
LKNT20BP	20 M	#6	6.91"	5.25"	1.6 lb
LKNT36BP	35 M	#11	10.85"	9.88"	2.2 lb

Interlok Accessories

NVENT LENTON INTERLOK GROMMET



- Color-coded for the appropriate coupler size
- Durable and reusable

Material: Polyester Urethane

Part Number	Diameter 1 Ø1	Diameter 2 Ø2	Length L	For Use With	Color	Unit Weight
LK307A	1.81"	0.77"	2.06"	LK5, LK6, LK7	Blue	0.2 lb
LK308A	1.93"	0.77"	2.06"	LK8	Red	0.2 lb
LK316A	1.56"	0.77"	2"	LK16	Black	0.1 lb
LK320A	1.69"	0.77"	2"	LK20	Yellow	0.1 lb
LK309A	2.06"	0.77"	2.06"	LK9	Black	0.3 lb
LK310A	2¼"	0.77"	2.06"	LK10	Yellow	0.3 lb
LK311A	2.38"	0.77"	2.06"	LK11	Blue	0.3 lb
LK314A	2.63"	0.77"	2.06"	LK12, LK40, LKT14	Red	0.5 lb
LK318A	3¼"	0.77"	2.06"	LKT18, LKT50	Black	1.1 lb

NVENT LENTON INTERLOK HY15LM GROUT



- Cures quickly, allowing early removal of bracing systems
- Nonmetallic grout will not rust or stain structures
- Designed to provide superior dynamic, seismic and ultimate strength performance for moment frame applications
- For use in pump or gravity fill applications



Part Number	Compressive Strength	Working Temperature	Unit Weight
HY15LM	3500 psi @ 1 d, 16000 psi @ 28 d	32 to 100°F	50 lb

Compressive Strength is based on room temperature tests performed at 70°F (21°C).

The shelf life of nVent LENTON Interlok Grout is 12 months from the manufacturing date printed on the bag.

nVent LENTON Interlok Grout should be stored in a cool, dry environment. It is recommended that the nVent LENTON Interlok Grout be stored indoors to maintain maximum shelf life and physical properties.

Interlok Accessories

NVENT LENTON INTERLOK HYA15HT GROUT ADDITIVE, HOT OR COLD TEMPERATURE



- Allows for hot temperature grouting
- Increases grout working time in hot or cold climates
- Allows for cold temperature grouting
- Extends the construction season
- For use in pump or gravity fill applications
- Designed for use with nVent LENTON Interlok HY15LM Grout

Part Number	Compressive Strength	Working Temperature	Unit Weight
HYA15HT	3500 psi @ 1 d, 16000 psi @ 28 d	70 to 122°F	0.1 lb
HYA15CT	3500 psi @ 1 d, 16000 psi @ 28 d	20 to 50°F	1.5 lb

For use with HY15LM grout. Extreme weather concreting procedures, such as ACI 305 Hot Weather Concreting and ACI 306 Cold Weather Concreting, must be followed. HYA15HT can be used in temperatures as low as 70°F (21°C) to extend working time; however, this may slow the compressive strength curve.

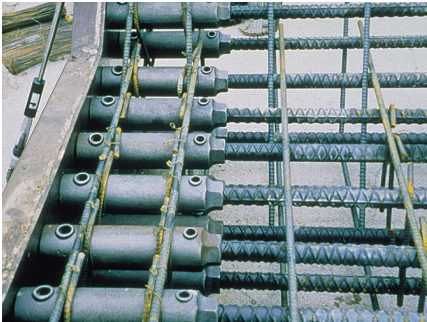
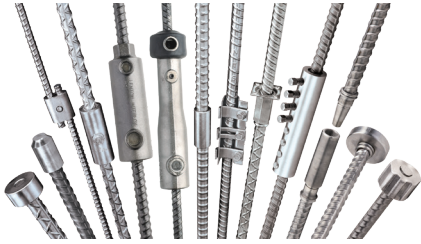
HY15LM FLOW KIT



- Includes all components needed to perform the slump test
- Durable and reusable

Part Number	Unit Weight
LK430	6.5 lb

A Look at nVent LENTON Concrete Reinforcement Products



WARNING

nVent products shall be installed and used only as indicated in nVent's product instruction sheets and training materials. Instruction sheets are available at nVent.com/LENTON and from your nVent customer service representative. Improper installation, misuse, misapplication or other failure to completely follow nVent's instructions and warnings may cause product malfunction, property damage, serious bodily injury and/or death, and void your warranty.



ACI is a registered trademark of the American Concrete Institute.
ASTM is a registered trademark of ASTM International.
IAPMO is a registered trademark of the International Association of Plumbing & Mechanical Officials.
IBC and ICC are registered trademarks of the International Code Council.
UBC (Uniform Building Code) is a registered trademark of the International Conference of Building Officials.

We reserve the right to make any alterations to the information contained in this brochure which we consider to be either necessary or advantageous. This brochure is designed to provide only preliminary information on the products and is not a contract. The Company does not accept any liability for loss or damage arising from failure to follow its instructions to products not agreed by it.

nVent LENTON is a world leader in advanced mechanical rebar splicing systems. Our Rebar Splicing Specialists understand the reinforced concrete business and inherent rebar splicing challenges on today's job sites. nVent LENTON offers a wide range of Mechanical Splices for a wide variety of construction needs:

- nVent LENTON Taper-Threaded Splicing Systems – Ideal alternative to conventional lap splices
- Mechanical Anchors including nVent LENTON Terminator – Ideal alternative to hooked rebar anchorage and shear reinforcement
- nVent LENTON Ultimate Splicing Systems and Terminators – Ideal for high-strain, fatigue, seismic and nuclear performance requirements
- nVent LENTON Interlok Grout-Filled Precast Splicing System – Ideal for precast structures
- nVent LENTON Quick Wedge Lap Splicing System – Ideal for retrofit applications
- nVent LENTON Speed Sleeve Compression-Only Splices – Designed Only for compression applications in columns and walls
- nVent LENTON Cadweld – Ideal for curved rebar in nuclear containment structures
- nVent LENTON Connect Shear Bolt Splicing System – Ideal in situ construction
- nVent LENTON Swaged Terminator – Ideal alternative for high-volume headed bar terminators

As your rebar splicing specialist, nVent LENTON offers you the expertise you need for all your rebar splicing projects.

nVent Engineered Electrical & Fastening Solutions is a leading global manufacturer and marketer of superior engineered products for niche electrical, mechanical and concrete applications. These nVent products are sold globally under a variety of market-leading brands: nVent ERICO welded electrical connections, facility electrical protection, and rail and industrial products; nVent CADDY fixing, fastening and support products; nVent ERIFLEX low voltage power and grounding connections; and nVent LENTON engineered systems for concrete reinforcement. For more information on nVent ERICO, CADDY, ILSCO, ERIFLEX and LENTON, please visit nVent.com/LENTON.

How to Order:

To order the correct nVent LENTON Interlok for your construction applications, please contact your local nVent Customer Care Representative.

How to Specify

Mechanical splices shall be Interlok, manufactured by nVent LENTON.

Generic: Mechanical reinforcing steel splices shall meet building code requirements of developing in tension and compression as required by*. The sleeve shall be produced as a casting from ductile iron conforming to ASTM A536 standards. One end of the sleeve shall consist of a positive locking tapered

thread, while the opposing cylindrical side is designed with equally spaced concentric ribs. Grouting must be performed in accordance with the manufacturer's recommended installation procedures.

*as required by local norms/codes.



North America

Tel +1.800.248.2677

LENTON-OrderSupportEast@nVent.com

LENTON-OrderSupportWest@nVent.com

Europe

Tel +311.35835100

lentonspecialistemea@nVent.com

Middle East

Tel +971.506.255.903

Africa

Tel +31.13.5385.440

Asia Pacific

Tel +61.2.9751.8500

ausorders@nVent.com

Latin America

Tel +55.3686-9785

LA-cotizaciones@nVent.com



Our powerful portfolio of brands:

CADDY ERICO HOFFMAN ILSCO SCHROFF TRACHTE