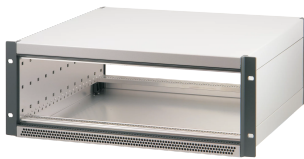


RatiopacPRO AIR 19" Rack Mount Case, Retrofittable Shielding

Servicios públicos de energía



The nVent SCHROFF RatiopacPRO case provides electronics protection for 19" and individual electronic assemblies. This flexible and robust case is simple to convert from desktop to a 19" rack mount case and includes four different style options. This version of the case provides advanced cooling capabilities and mounting brackets for assembly into a 19" rack.

CERTIFICACIONES



CARACTERÍSTICAS

Cases for individual assembly with 19" standard components or specific internal mounting, e.g. with mounting plate

Retrofittable EMC shielding

Version with 19" mounting brackets, no visible screws

The case has 2 x 1/2 U clearances for ventilation beneath and above the board cage

For board depth 160 mm, 220 mm, 280 mm, and 340 mm (depending on case depth)

Symmetrical design, identical front and rear side

Conforms with DIN EN 62368-1

ESPECIFICACIONES

Table 1/3

Número de catálogo	Rack Height	Profundidad	Package Quantity	Usable Height	Usable Width	Front Frame Construction
--------------------	-------------	-------------	------------------	---------------	--------------	--------------------------

24571-582	3 U	255.5 mm	1	112.3 mm	432 mm	19" Mounting Brackets, Horizontal Rails
24571-585	3 U	315.5 mm	1	112.3 mm	432 mm	19" Mounting Brackets, Horizontal Rails
24571-586	3 U	375.5 mm	1	112.3 mm	432 mm	19" Mounting Brackets, Horizontal Rails
24571-587	3 U	435.5 mm	1	112.3 mm	432 mm	19" Mounting Brackets, Horizontal Rails
24571-588	3 U	495.5 mm	1	112.3 mm	432 mm	19" Mounting Brackets, Horizontal Rails
24571-630	4 U	255.5 mm	1	156.8 mm	432 mm	19" Mounting Brackets, Horizontal Rails
24571-633	4 U	315.5 mm	1	156.8 mm	432 mm	19" Mounting Brackets, Horizontal Rails
24571-634	4 U	375.5 mm	1	156.8 mm	432 mm	19" Mounting Brackets, Horizontal Rails
24571-635	4 U	435.5 mm	1	156.8 mm	432 mm	19" Mounting Brackets, Horizontal Rails
24571-636	4 U	495.5 mm	1	156.8 mm	432 mm	19" Mounting Brackets, Horizontal Rails
24571-678	6 U	255.5 mm	1	245.7 mm	432 mm	19" Mounting Brackets, Horizontal Rails
24571-681	6 U	315.5 mm	1	245.7 mm	432 mm	19" Mounting Brackets, Horizontal Rails
24571-682	6 U	375.5 mm	1	245.7 mm	432 mm	19" Mounting Brackets, Horizontal Rails
24571-683	6 U	435.5 mm	1	245.7 mm	432 mm	19" Mounting Brackets, Horizontal Rails
24571-684	6 U	495.5 mm	1	245.7 mm	432 mm	19" Mounting Brackets, Horizontal Rails

Table 2/3

Número de catálogo	Cooling Option	Cumple con	EMC Shielding	Altura	Product Family	Product Type
24571-582	Sí	IEC 60297-3-101, IEC 60297-3-102, IEC 60297-3-102, IEEE 1101.1, IEEE 1101.10, IEEE 1101.11	No (Retrofittable)	177 mm	RatiopacPRO AIR	Case
24571-585	Sí	IEC 60297-3-101, IEC 60297-3-102, IEC 60297-3-102, IEEE 1101.1, IEEE 1101.10, IEEE 1101.11	No (Retrofittable)	177 mm	RatiopacPRO AIR	Case
24571-586	Sí	IEC 60297-3-101, IEC 60297-3-102, IEC 60297-3-102, IEEE 1101.1, IEEE 1101.10, IEEE 1101.11	No (Retrofittable)	177 mm	RatiopacPRO AIR	Case
24571-587	Sí	IEC 60297-3-101, IEC 60297-3-102, IEC 60297-3-102, IEEE 1101.1, IEEE 1101.10, IEEE 1101.11	No (Retrofittable)	177 mm	RatiopacPRO AIR	Case
24571-588	Sí	IEC 60297-3-101, IEC 60297-3-102, IEC 60297-3-102, IEEE 1101.1, IEEE 1101.10, IEEE 1101.11	No (Retrofittable)	177 mm	RatiopacPRO AIR	Case
24571-630	Sí	IEC 60297-3-101, IEC 60297-3-102, IEC 60297-3-102, IEEE 1101.1, IEEE 1101.10, IEEE 1101.11	No (Retrofittable)	221.5 mm	RatiopacPRO AIR	Case
24571-633	Sí	IEC 60297-3-101, IEC 60297-3-102, IEC 60297-3-102, IEEE 1101.1, IEEE 1101.10, IEEE 1101.11	No (Retrofittable)	221.5 mm	RatiopacPRO AIR	Case

Número de catálogo	Cooling Option	Cumple con	EMC Shielding	Altura	Product Family	Product Type
24571-634	Sí	IEC 60297-3-101, IEC 60297-3-102, IEEE 1101.1, IEEE 1101.10, IEEE 1101.11	No (Retrofittable)	221.5 mm	RatiopacPRO AIR	Case
24571-635	Sí	IEC 60297-3-101, IEC 60297-3-102, IEEE 1101.1, IEEE 1101.10, IEEE 1101.11	No (Retrofittable)	221.5 mm	RatiopacPRO AIR	Case
24571-636	Sí	IEC 60297-3-101, IEC 60297-3-102, IEEE 1101.1, IEEE 1101.10, IEEE 1101.11	No (Retrofittable)	221.5 mm	RatiopacPRO AIR	Case
24571-678	Sí	IEC 60297-3-101, IEC 60297-3-102, IEEE 1101.1, IEEE 1101.10, IEEE 1101.11	No (Retrofittable)	310.35 mm	RatiopacPRO AIR	Case
24571-681	Sí	IEC 60297-3-101, IEC 60297-3-102, IEEE 1101.1, IEEE 1101.10, IEEE 1101.11	No (Retrofittable)	310.35 mm	RatiopacPRO AIR	Case
24571-682	Sí	IEC 60297-3-101, IEC 60297-3-102, IEEE 1101.1, IEEE 1101.10, IEEE 1101.11	No (Retrofittable)	310.35 mm	RatiopacPRO AIR	Case
24571-683	Sí	IEC 60297-3-101, IEC 60297-3-102, IEEE 1101.1, IEEE 1101.10, IEEE 1101.11	No (Retrofittable)	310.35 mm	RatiopacPRO AIR	Case

Número de catálogo	Cooling Option	Cumple con	EMC Shielding	Altura	Product Family	Product Type
24571-684	Sí	IEC 60297-3-101, IEC 60297-3-102, IEEE 1101.1, IEEE 1101.10, IEEE 1101.11	No (Retrofittable)	310.35 mm	RatiopacPRO AIR	Case

Table 3/3

Número de catálogo	Protection Rating	Rack Width	Carga estática	Tipo	Ancho
24571-582	IP20	84 HP	25 kgf	Case for Individual Electronic Components	448.9 mm
24571-585	IP20	84 HP	25 kgf	Case for Individual Electronic Components	448.9 mm
24571-586	IP20	84 HP	25 kgf	Case for Individual Electronic Components	448.9 mm
24571-587	IP20	84 HP	25 kgf	Case for Individual Electronic Components	448.9 mm
24571-588	IP20	84 HP	25 kgf	Case for Individual Electronic Components	448.9 mm
24571-630	IP20	84 HP	25 kgf	Case for Individual Electronic Components	448.9 mm
24571-633	IP20	84 HP	25 kgf	Case for Individual Electronic Components	448.9 mm
24571-634	IP20	84 HP	25 kgf	Case for Individual Electronic Components	448.9 mm
24571-635	IP20	84 HP	25 kgf	Case for Individual Electronic Components	448.9 mm
24571-636	IP20	84 HP	25 kgf	Case for Individual Electronic Components	448.9 mm
24571-678	IP20	84 HP	25 kgf	Case for Individual Electronic Components	448.9 mm

Número de catálogo	Protection Rating	Rack Width	Carga estática	Tipo	Ancho
24571-681	IP20	84 HP	25 kgf	Case for Individual Electronic Components	448.9 mm
24571-682	IP20	84 HP	25 kgf	Case for Individual Electronic Components	448.9 mm
24571-683	IP20	84 HP	25 kgf	Case for Individual Electronic Components	448.9 mm
24571-684	IP20	84 HP	25 kgf	Case for Individual Electronic Components	448.9 mm

ADDITIONAL PRODUCT DETAILS

Modifications (special colours or sizes).

Custom solutions (cut-outs in top cover, base plate or side panels).

Assembly service from 1 piece.

ADVERTENCIA

Los productos nVent deben instalarse y usarse solo como se indica en las hojas de instrucciones y materiales de capacitación del producto nVent. Las hojas de instrucciones están disponibles en www.nvent.com y con su representante de atención al cliente de nVent. La instalación incorrecta, el mal uso, la aplicación incorrecta u otras fallas en el seguimiento completo de las instrucciones y advertencias de nVent pueden causar el mal funcionamiento del producto, daños a la propiedad, lesiones corporales graves y la muerte y/o anular la garantía.



Our powerful portfolio of brands:

CADDY ERICO HOFFMAN ILSCO SCHROFF TRACHTE