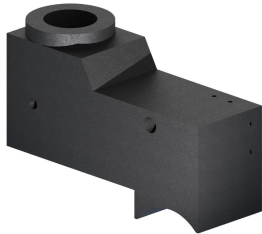


Horizontal Pouring Basin, Top Fill, 90°



90 degree top fill horizontal pouring basins are used when structural interferences are directly above the tap hole in the sleeve.

FEATURES

Made from heat-resistant graphite

Durable, re-usable and long lasting

Designed for use with T-Series and B-Series horizontal top fill sleeves

SPECIFICATIONS

Material: Graphite

Table 1/1

Catalog Number	Diameter (Ø)	Length 1 (L1)	Length 2 (L2)	Width (W)	Height 1 (H1)	Height 2 (H2)
RB TSA9040X	38 mm	229 mm	76 mm	76 mm	140mm	102mm
RB TSA9735X	38 mm	248 mm	76 mm	76 mm	140mm	89mm
RB TSA6040F	64 mm	152 mm	76 mm	76 mm	140mm	102mm
RB TSA9740A	41 mm	248 mm	76 mm	76 mm	140mm	102mm
RB TSA7040J	76 mm	179 mm	76 mm	76 mm	140mm	102mm
RB TSA9040C	48 mm	229 mm	76 mm	76 mm	140mm	102mm

CatalogNumber	Diameter (Ø)	Length 1 (L1)	Length 2 (L2)	Width (W)	Height 1 (H1)	Height 2 (H2)
RB TSA9740C	48 mm	248 mm	76 mm	76 mm	140mm	102mm
RB TSA9040D	54 mm	229 mm	76 mm	76 mm	140mm	102mm
RB TSB15045D	54 mm	381 mm	76 mm	76 mm	152mm	114mm
RB TSB12040E	57 mm	305 mm	76 mm	76 mm	152mm	102mm
RB TSA9040F	64 mm	229 mm	76 mm	76 mm	140mm	102mm
RB TSB12042F	64 mm	305 mm	76 mm	76 mm	152mm	108mm
RB TSA9040J	76 mm	229 mm	76 mm	76 mm	140mm	102mm
RB TSB13545J	76 mm	342 mm	76 mm	76 mm	152mm	114mm
RB TSA9040M	95 mm	229 mm	76 mm	76 mm	140mm	102mm
RB TSB12050M	95 mm	305 mm	76 mm	76 mm	152mm	127mm
RB TSB15045M	95 mm	381 mm	76 mm	76 mm	152mm	114mm
RB TSB18550M	95 mm	470 mm	76 mm	76 mm	152mm	127mm
RB TSC18550M	95 mm	470 mm	76 mm	76 mm	179mm	127mm
RB TSC26050M	95 mm	660 mm	76 mm	76 mm	179mm	127mm

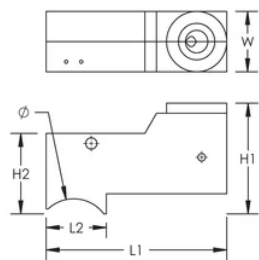
ADDITIONAL PRODUCT DETAILS

RB TSA pouring basins require one RBW341 pouring basin frame. RB TSB and RB TSC pouring basins require one RBW341 pouring basin frame and two RBS5000 bolt retainers (all sold separately).

Prior to installation, please read and understand all of the detailed instructions and safety notices provided in the nVent LENTON Cadweld Rebar Splicing System Instruction Manual.

Sizes not shown may be available by special order. Contact your nVent LENTON representative for more information.

DIAGRAMS



WARNING

nVent products shall be installed and used only as indicated in nVent's product instruction sheets and training materials. Instruction sheets are available at www.nvent.com and from your nVent customer service representative. Improper installation, misuse, misapplication or other failure to completely follow nVent's instructions and warnings may cause product malfunction, property damage, serious bodily injury and death and/or void your warranty.

North America

+1.800.753.9221
Option 1 – Customer Care
Option 2 – Technical
Support

Europe

Netherlands:
+31 800-0200135
France:
+33 800 901 793

Europe

Germany:
800 1890272
Other Countries:
+31 13 5835404

APAC

Shanghai:
+ 86 21 2412 1618/19
Sydney:
+61 2 9751 8500



Our powerful portfolio of brands:

CADDY ERICO HOFFMAN ILSCO SCHROFF TRACHTE