

# Crucible Cover



The crucible cover is designed to be placed onto the crucible extension. It is made from heat-resistant graphite and designed to allow smoke to escape but help prevent sparks from escaping during the reaction.

## FEATURES

Made from heat-resistant graphite

Helps protect the operator from heat and sparks

## SPECIFICATIONS

**Material:** Graphite

Table 1/1

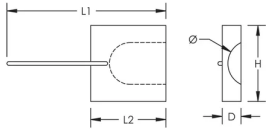
Catalog Number	Length 1 (L1)	Length 2 (L2)	Depth (D)	Height (H)	Diameter (Ø)
RBS43835	262 mm	127 mm	32mm	127 mm	70 mm
RBS43836	288 mm	152 mm	32mm	152 mm	70 mm

## ADDITIONAL PRODUCT DETAILS

Prior to installation, please read and understand all of the detailed instructions and safety notices provided in the nVent LENTON Cadweld Rebar Splicing System Instruction Manual.

## DIAGRAMS

---



## WARNING

---

nVent products shall be installed and used only as indicated in nVent's product instruction sheets and training materials. Instruction sheets are available at [www.nvent.com](http://www.nvent.com) and from your nVent customer service representative. Improper installation, misuse, misapplication or other failure to completely follow nVent's instructions and warnings may cause product malfunction, property damage, serious bodily injury and death and/or void your warranty.

### North America

+1.800.753.9221  
Option 1 – Customer Care  
Option 2 – Technical  
Support

### Europe

Netherlands:  
+31 800-0200135  
France:  
+33 800 901 793

### Europe

Germany:  
800 1890272  
Other Countries:  
+31 13 5835404

### APAC

Shanghai:  
+ 86 21 2412 1618/19  
Sydney:  
+61 2 9751 8500



Our powerful portfolio of brands:

**CADDY ERICO HOFFMAN ILSCO SCHROFF TRACHTE**