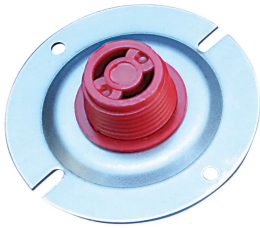


CFF Tapered Screw-In Plug for A12, A22 and A32K Couplers



FEATURES

Designed for use with the A12, A22 and A32K coupler families

Designed to keep dirt, water and concrete slurry out of the coupler during the concrete pour

Durable mounting plates allow for easy attachment to forms

Color coded for the appropriate coupler size

SPECIFICATIONS

Material: High Density Polyethylene (HDPE);Steel

Table 1/2

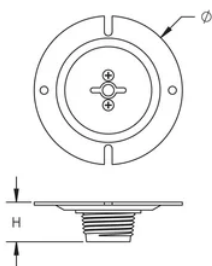
Catalog Number	Article Number	Rebar Size, Metric	Rebar Size, US	Rebar Size, Canada	Diameter (Ø)	Height (H)
EL22CFF	153880	22 mm	#7		75 mm	18 mm
EL25CFF	153890	25 mm	#8	25M	75 mm	18 mm
EL28CFF	153900	28 mm	#9	30M	75 mm	18 mm
EL30CFF	153910	30 mm			75 mm	18 mm

CatalogNumber	Article Number	Rebar Size, Metric	Rebar Size, US	Rebar Size, Canada	Diameter (Ø)	Height (H)
EL32CFF	153920	32 mm	#10		95 mm	18 mm
EL36CFF	153925	36 mm	#11	35M	95 mm	18 mm
EL40CFF	153930	40 mm			95 mm	18 mm
EL50CFF	154980	50 mm			95 mm	18 mm

Table 2/2

Catalog Number	Article Number	Color
EL22CFF	153880	Blue
EL25CFF	153890	Red
EL28CFF	153900	Black
EL30CFF	153910	White
EL32CFF	153920	Yellow
EL36CFF	153925	Blue
EL40CFF	153930	Green
EL50CFF	154980	Black

DIAGRAMS



WARNING

nVent products shall be installed and used only as indicated in nVent's product instruction sheets and training materials. Instruction sheets are available at www.nvent.com and from your nVent customer service representative. Improper installation, misuse, misapplication or other failure to completely follow nVent's instructions and warnings may cause product malfunction, property damage, serious bodily injury and death and/or void your warranty.

North America

+1.800.753.9221
Option 1 – Customer Care
Option 2 – Technical
Support

Europe

Netherlands:
+31 800-0200135
France:
+33 800 901 793

Europe

Germany:
800 1890272
Other Countries:
+31 13 5835404

APAC

Shanghai:
+ 86 21 2412 1618/19
Sydney:
+61 2 9751 8500



Our powerful portfolio of brands:

CADDY ERICO HOFFMAN ILSCO SCHROFF TRACHTE