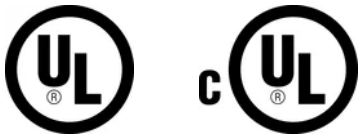


# Single Hole Cable Strap



## CERTIFICATIONS



## FEATURES

Secures lightning protection conductors and prevents displacement

Mechanically secured with screws or nails

## SPECIFICATIONS

Table 1/2

Catalog Number	Article Number	Material	Finish	Outer Diameter (OD)	Depth (D)	Width (W)
PC010C	711390	Copper		10 mm	15mm	42 mm
LPC803L		Copper	Tinned	11.91 mm	12.7mm	25 mm
LPC801		Copper		11.91 mm	9.84mm	25 mm
PC008A	711370	Aluminum		7 mm	10mm	28 mm

CatalogNumber	Article Number	Material	Finish	Outer Diameter (OD)	Depth (D)	Width (W)
LPC807		Copper		33 mm	31.75mm	76.71 mm
LPC805		Copper		12.7 mm	15.88mm	31.75 mm
LPA805		Aluminum		12.7 mm	15.88mm	31.75 mm

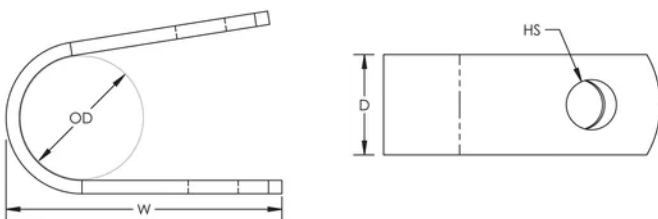
Table 2/2

Catalog Number	Article Number	Hole Size (HS)	Certifications
PC010C	711390	7 mm	
LPC803L		4.76 mm	E202878-Combined_CoC, E202878-Combined_CoC
LPC801		4.76 mm	E202878-Combined_CoC, E202878-Combined_CoC
PC008A	711370	5 mm	
LPC807		7.14 mm	E202878-Combined_CoC, E202878-Combined_CoC
LPC805		7.14 mm	E202878-Combined_CoC, E202878-Combined_CoC
LPA805		7.14 mm	

## ADDITIONAL PRODUCT DETAILS

Typically installed every 3' (0.9 m) of conductor.

## DIAGRAMS



## WARNING

---

nVent products shall be installed and used only as indicated in nVent's product instruction sheets and training materials. Instruction sheets are available at [www.nvent.com](http://www.nvent.com) and from your nVent customer service representative. Improper installation, misuse, misapplication or other failure to completely follow nVent's instructions and warnings may cause product malfunction, property damage, serious bodily injury and death and/or void your warranty.

### North America

+1.800.753.9221

Option 1 – Customer Care

Option 2 – Technical

Support

### Europe

Netherlands:

+31 800-0200135

France:

+33 800 901 793

### Europe

Germany:

800 1890272

Other Countries:

+31 13 5835404

### APAC

Shanghai:

+ 86 21 2412 1618/19

Sydney:

+61 2 9751 8500



Our powerful portfolio of brands:

**CADDY**

**ERICO**

**HOFFMAN**

**ILSCO**

**SCHROFF**

**TRACHTE**