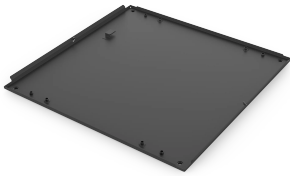


Varistar CP Base Plate, One-Piece

The base plate is solid and covers the base of the cabinet.



FEATURES

The base plate is solid and covers the base of the cabinet

Is assembled from outside

SPECIFICATIONS

Product Type: Cabinet/Rack Base

Material: Steel

Table 1/2

Catalog Number	Width	Depth	Package Quantity	Color	Color Code	Finish
21630-629	600mm	600mm	1			Hot-Dip Galvanized
21630-630	600mm	800mm	1			Hot-Dip Galvanized
21630-635	800mm	600mm	1			Hot-Dip Galvanized
21630-636	800mm	800mm	1			Hot-Dip Galvanized
21630-628	600mm	300mm	1			Hot-Dip Galvanized
21630-631	600mm	900mm	1			Hot-Dip Galvanized

CatalogNumber	Width	Depth	Package Quantity	Color	Color Code	Finish
21630-632	600mm	1000mm	1			Hot-Dip Galvanized
21630-637	800mm	900mm	1			Hot-Dip Galvanized
21630-638	800mm	1000mm	1			Hot-Dip Galvanized
21630-320	600mm	300mm	1	Black Grey	RAL 7021	Powder Coated
21630-322	600mm	600mm	1	Black Grey	RAL 7021	Powder Coated
21630-323	600mm	800mm	1	Black Grey	RAL 7021	Powder Coated
21630-324	600mm	900mm	1	Black Grey	RAL 7021	Powder Coated
21630-325	600mm	1000mm	1	Black Grey	RAL 7021	Powder Coated
21630-326	600mm	1100mm	1	Black Grey	RAL 7021	Powder Coated
21630-327	600mm	1200mm	1	Black Grey	RAL 7021	Powder Coated
21630-330	800mm	600mm	1	Black Grey	RAL 7021	Powder Coated
21630-331	800mm	800mm	1	Black Grey	RAL 7021	Powder Coated
21630-332	800mm	900mm	1	Black Grey	RAL 7021	Powder Coated
21630-333	800mm	1000mm	1	Black Grey	RAL 7021	Powder Coated
21630-334	800mm	1100mm	1	Black Grey	RAL 7021	Powder Coated
21630-335	800mm	1200mm	1	Black Grey	RAL 7021	Powder Coated
21630-633	600mm	1100mm	1			Hot-Dip Galvanized
21630-634	600mm	1200mm	1			Hot-Dip Galvanized

CatalogNumber	Width	Depth	Package Quantity	Color	Color Code	Finish
21630-639	800mm	1100mm	1			Hot-Dip Galvanized
21630-640	800mm	1200mm	1			Hot-Dip Galvanized

Table 2/2

Catalog Number	Quick Ship
21630-629	No
21630-630	No
21630-635	No
21630-636	No
21630-628	No
21630-631	No
21630-632	No
21630-637	No
21630-638	No
21630-320	No
21630-322	No
21630-323	No
21630-324	No
21630-325	No
21630-326	No

Catalog Number	Quick Ship
21630-327	No
21630-330	No
21630-331	No
21630-332	No
21630-333	No
21630-334	No
21630-335	No
21630-633	No
21630-634	No
21630-639	No
21630-640	No

ADDITIONAL PRODUCT DETAILS

This base plate is used for applications which don't require cable entry from the base.

Please purchase the grounding kit separately.

WARNING

nVent products shall be installed and used only as indicated in nVent's product instruction sheets and training materials. Instruction sheets are available at www.nvent.com and from your nVent customer service representative. Improper installation, misuse, misapplication or other failure to completely follow nVent's instructions and warnings may cause product malfunction, property damage, serious bodily injury and death and/or void your warranty.

North America

All locations

+1.763.422.2661

Chat with us:

nvent.com/schroff

Europe

Straubenhardt, Germany

+49.7082.794.0

Betschdorf, France

+33.3.88.90.64.90

Warsaw, Poland

+48.22.209.98.35

Assago, Italy

+39.02.932.7141

Chat with us:

nvent.com/schroff

Asia

Shanghai, China

+86.21.2412.6943

Qingdao, China

+86.532.8771.6101

Singapore

+65.6768.5800

Shin-Yokohama, Japan

+81.45.476.0271

Chat with us:

nvent.com/schroff

Middle East & India

Dubai, United Arab

Emirates

+971.4.378.1700

Bangalore, India

+91.80.6715.2001

Istanbul, Turkey

+90.216.250.7374

Chat with us:

nvent.com/schroff



Our powerful portfolio of brands:

CADDY

ERICO

HOFFMAN

ILSCO

SCHROFF

TRACHTE