

# MBJ Grounding and Bonding Braid, Tinned Copper



MBJ Grounding and Bonding Braids are a reliable and convenient grounding solution for applications that require flexibility and durability. The tinned copper ground braids with massivated palms come ready to install without any additional cutting, stripping, crimping or punching and do not require the addition of tin or crimped lugs. The proprietary manufacturing process optimizes the electrical contact between each wire and helps eliminate moisture issues in the palms, preventing corrosion and lengthening the useful life of the braid.

## CERTIFICATIONS



## FEATURES

Complete range of earth/ground flexible connections from 6 - 100 mm<sup>2</sup> (11.84 - 197.35 kcmil) cross section and from 100 - 500 mm (3.937" - 19.685") length

Integral palm, without tin or crimped lugs for superior electrical contact and tensile strength resistance

Resistant to vibration and fatigue, reducing maintenance

Provides weight savings, material savings and lower impedance when compared to similar lugged cables with insulation

Ready to use out of the box, eliminates the need for cutting, stripping, crimping and punching

Quick and easy to install

Recommended by the EMC/EMI directives and less impedance than cables

EAC compliant

RoHS compliant

Compliant to ISO 6469-1 (Electrically propelled road vehicles - Part 1: Rechargeable energy storage system) - Section 6.2.2 Vibrations

## SPECIFICATIONS

**Material:** Copper

**Complies With:** IEC® 60439.1;IEC® 61439.1

**Finish:** Tinned

**Certification Details:** UL® 467

**Working Temperature:** 105 °C Max

Table 1/2

Catalog Number	Article Number	Ampacity	Thickness (T)	Cross Section	Length (L)	Hole Size (HS)
MBJ6-150-6	556600	40A	1.1 mm	6mm <sup>2</sup>	150mm	6.5 mm
MBJ6-200-6	563410	40A	1.1 mm	6mm <sup>2</sup>	200mm	6.5 mm
MBJ10-200-6	556930	75A	1.1 mm	10mm <sup>2</sup>	200mm	6.5 mm
MBJ16-100-6	563540	120A	1.5 mm	16mm <sup>2</sup>	100mm	6.5 mm
MBJ16-100-8	556620	120A	1.5 mm	16mm <sup>2</sup>	100mm	8.5 mm
MBJ10-300-6	556610	75A	1.1 mm	10mm <sup>2</sup>	300mm	6.5 mm
MBJ16-200-6	563300	120A	1.5 mm	16mm <sup>2</sup>	200mm	6.5 mm
MBJ16-200-8	556640	120A	1.5 mm	16mm <sup>2</sup>	200mm	8.5 mm
MBJ25-100-10	556670	150A	1.9 mm	25mm <sup>2</sup>	100mm	10.5 mm
MBJ30-100-10	556720	180A	2 mm	30mm <sup>2</sup>	100mm	10.5 mm
MBJ16-150-6	563550	120A	1.5 mm	16mm <sup>2</sup>	150mm	6.5 mm
MBJ16-150-8	556630	120A	1.5 mm	16mm <sup>2</sup>	150mm	8.5 mm
MBJ16-250-8	556650	120A	1.5 mm	16mm <sup>2</sup>	250mm	8.5 mm
MBJ25-150-10	556680	150A	1.9 mm	25mm <sup>2</sup>	150mm	10.5 mm
MBJ35-100-10	556770	197A	2.1 mm	35mm <sup>2</sup>	100mm	10.5 mm

CatalogNumber	Article Number	Ampacity	Thickness (T)	Cross Section	Length (L)	Hole Size (HS)
MBJ16-300-6	563320	120A	1.5 mm	16mm <sup>2</sup>	300mm	6.5 mm
MBJ16-300-8	556660	120A	1.5 mm	16mm <sup>2</sup>	300mm	8.5 mm
MBJ25-200-10	556690	150A	1.9 mm	25mm <sup>2</sup>	200mm	10.5 mm
MBJ25-200-12	563430	150A	1.9 mm	25mm <sup>2</sup>	200mm	12.5 mm
MBJ25-200-6	563340	150A	1.9 mm	25mm <sup>2</sup>	200mm	6.5 mm
MBJ25-200-8	555200	150A	1.9 mm	25mm <sup>2</sup>	200mm	8.5 mm
MBJ30-150-10	556730	180A	2 mm	30mm <sup>2</sup>	150mm	10.5 mm
MBJ35-150-10	556780	197A	2.1 mm	35mm <sup>2</sup>	150mm	10.5 mm
MBJ50-100-10	556820	250A	2.5 mm	50mm <sup>2</sup>	100mm	10.5 mm
MBJ16-500-8	556940	120A	1.5 mm	16mm <sup>2</sup>	500mm	8.5 mm
MBJ25-250-10	556700	150A	1.9 mm	25mm <sup>2</sup>	250mm	10.5 mm
MBJ30-200-10	556740	180A	2 mm	30mm <sup>2</sup>	200mm	10.5 mm
MBJ25-300-10	556710	150A	1.9 mm	25mm <sup>2</sup>	300mm	10.5 mm
MBJ25-300-8	555201	150A	1.9 mm	25mm <sup>2</sup>	300mm	8.5 mm
MBJ25-500-10	556950	150A	1.9 mm	25mm <sup>2</sup>	500mm	10.5 mm
MBJ30-250-10	556750	180A	2 mm	30mm <sup>2</sup>	250mm	10.5 mm
MBJ35-200-10	556790	197A	2.1 mm	35mm <sup>2</sup>	200mm	10.5 mm
MBJ30-300-10	556760	180A	2 mm	30mm <sup>2</sup>	300mm	10.5 mm

CatalogNumber	Article Number	Ampacity	Thickness (T)	Cross Section	Length (L)	Hole Size (HS)
MBJ30-500-10	556960	180A	2 mm	30mm <sup>2</sup>	500mm	10.5 mm
MBJ35-250-10	556800	197A	2.1 mm	35mm <sup>2</sup>	250mm	10.5 mm
MBJ35-300-10	556810	197A	2.1 mm	35mm <sup>2</sup>	300mm	10.5 mm
MBJ35-500-10	556970	197A	2.1 mm	35mm <sup>2</sup>	500mm	10.5 mm
MBJ50-150-10	556830	250A	2.5 mm	50mm <sup>2</sup>	150mm	10.5 mm
MBJ35-250-25	565000	197A	3 mm	35mm <sup>2</sup>	250mm	25.5 mm
MBJ50-200-10	556840	250A	2.5 mm	50mm <sup>2</sup>	200mm	10.5 mm
MBJ50-200-12	563440	250A	2.5 mm	50mm <sup>2</sup>	200mm	12.5 mm
MBJ50-200-16	563360	250A	2.5 mm	50mm <sup>2</sup>	200mm	16.5 mm
MBJ50-200-18	563370	250A	2.5 mm	50mm <sup>2</sup>	200mm	18.5 mm
MBJ50-200-6	563350	250A	2.5 mm	50mm <sup>2</sup>	200mm	6.5 mm
MBJ50-250-10	556850	250A	2.5 mm	50mm <sup>2</sup>	250mm	10.5 mm
MBJ50-300-10	556860	250A	2.5 mm	50mm <sup>2</sup>	300mm	10.5 mm
MBJ50-300-16	563390	250A	2.5 mm	50mm <sup>2</sup>	300mm	16.5 mm
MBJ50-300-18	563400	250A	2.5 mm	50mm <sup>2</sup>	300mm	18.5 mm
MBJ50-300-6	563380	250A	2.5 mm	50mm <sup>2</sup>	300mm	6.5 mm
MBJ50-500-10	556980	250A	2.5 mm	50mm <sup>2</sup>	500mm	10.5 mm
MBJ50-500-12	563560	250A	2.5 mm	50mm <sup>2</sup>	500mm	12.5 mm

CatalogNumber	Article Number	Ampacity	Thickness (T)	Cross Section	Length (L)	Hole Size (HS)
MBJ70-300-22	563480	290A	3 mm	70mm <sup>2</sup>	300mm	22.5 mm
MBJ70-300-10	563460	290A	3.4 mm	70mm <sup>2</sup>	300mm	10.5 mm
MBJ70-300-12	563420	290A	3.4 mm	70mm <sup>2</sup>	300mm	12.5 mm
MBJ70-300-16	563470	290A	3.4 mm	70mm <sup>2</sup>	300mm	16.5 mm
MBJ70-300-6	563450	290A	3.4 mm	70mm <sup>2</sup>	300mm	6.5 mm
MBJ70-500-10	563490	290A	3.4 mm	70mm <sup>2</sup>	500mm	10.5 mm
MBJ100-250-16	563500	349A	4 mm	100mm <sup>2</sup>	250mm	16.5 mm
MBJ100-250-30	563510	349A	4 mm	100mm <sup>2</sup>	250mm	30.5 mm
MBJ100-500-16	563520	349A	4 mm	100mm <sup>2</sup>	500mm	16.5 mm
MBJ100-500-30	563530	349A	4 mm	100mm <sup>2</sup>	500mm	30.5 mm

Table 2/2

Catalog Number	Article Number	A	B	Unit Weight	Certifications
MBJ6-150-6	556600	11 mm	18 mm	0.01 kg	UL, CE, ERIFLEX MBJ, Bureau Veritas, RoHS, cUL, UKCA, ERIFLEX MBJ
MBJ6-200-6	563410	11 mm	18 mm	0.02 kg	UKCA, ERIFLEX MBJ, RoHS, UL, CE, ERIFLEX MBJ, Bureau Veritas, cUL
MBJ10-200-6	556930	11 mm	18 mm	0.02 kg	RoHS, UL, CE, ERIFLEX MBJ, Bureau Veritas, cUL, UKCA, ERIFLEX MBJ

Catalog Number	Article Number	A	B	Unit Weight	Certifications
MBJ16-100-6	563540	15 mm	20 mm	0.02 kg	RoHS, UL, CE, ERIFLEX MBJ, Bureau Veritas, cUL, UKCA, ERIFLEX MBJ
MBJ16-100-8	556620	15 mm	20 mm	0.02 kg	UKCA, ERIFLEX MBJ, UL, CE, ERIFLEX MBJ, Bureau Veritas, RoHS, cUL
MBJ10-300-6	556610	11 mm	18 mm	0.03 kg	UKCA, ERIFLEX MBJ, UL, CE, ERIFLEX MBJ, Bureau Veritas, RoHS, cUL
MBJ16-200-6	563300	15 mm	20 mm	0.03 kg	UKCA, ERIFLEX MBJ, UL, CE, ERIFLEX MBJ, Bureau Veritas, RoHS, cUL
MBJ16-200-8	556640	15 mm	20 mm	0.03 kg	cUL, UL, CE, ERIFLEX MBJ, Bureau Veritas, UKCA, ERIFLEX MBJ, RoHS
MBJ25-100-10	556670	20 mm	28 mm	0.03 kg	UKCA, ERIFLEX MBJ, UL, CE, ERIFLEX MBJ, Bureau Veritas, RoHS, cUL
MBJ30-100-10	556720	22 mm	28 mm	0.03 kg	UL, CE, ERIFLEX MBJ, Bureau Veritas, RoHS, cUL, UKCA, ERIFLEX MBJ
MBJ16-150-6	563550	15 mm	20 mm	0.04 kg	cUL, UL, CE, ERIFLEX MBJ, Bureau Veritas, UKCA, ERIFLEX MBJ, RoHS
MBJ16-150-8	556630	15 mm	20 mm	0.04 kg	RoHS, UL, CE, ERIFLEX MBJ, Bureau Veritas, cUL, UKCA, ERIFLEX MBJ

Catalog Number	Article Number	A	B	Unit Weight	Certifications
MBJ16-250-8	556650	15 mm	20 mm	0.04 kg	RoHS, UL, CE, ERIFLEX MBJ, Bureau Veritas, cUL, UKCA, ERIFLEX MBJ
MBJ25-150-10	556680	20 mm	28 mm	0.04 kg	cUL, UL, CE, ERIFLEX MBJ, Bureau Veritas, UKCA, ERIFLEX MBJ, RoHS
MBJ35-100-10	556770	22 mm	28 mm	0.04 kg	UL, CE, ERIFLEX MBJ, Bureau Veritas, RoHS, cUL, UKCA, ERIFLEX MBJ
MBJ16-300-6	563320	15 mm	20 mm	0.05 kg	UKCA, ERIFLEX MBJ, UL, CE, ERIFLEX MBJ, Bureau Veritas, RoHS, cUL
MBJ16-300-8	556660	15 mm	20 mm	0.05 kg	cUL, UL, CE, ERIFLEX MBJ, Bureau Veritas, UKCA, ERIFLEX MBJ, RoHS
MBJ25-200-10	556690	20 mm	28 mm	0.05 kg	RoHS, UL, CE, ERIFLEX MBJ, Bureau Veritas, cUL, UKCA, ERIFLEX MBJ
MBJ25-200-12	563430	20 mm	28 mm	0.05 kg	UKCA, ERIFLEX MBJ, UL, CE, ERIFLEX MBJ, Bureau Veritas, RoHS, cUL
MBJ25-200-6	563340	20 mm	28 mm	0.05 kg	cUL, UL, CE, ERIFLEX MBJ, Bureau Veritas, UKCA, ERIFLEX MBJ, RoHS
MBJ25-200-8	555200	20 mm	28 mm	0.05 kg	UL, CE, ERIFLEX MBJ, Bureau Veritas, cUL

Catalog Number	Article Number	A	B	Unit Weight	Certifications
MBJ30-150-10	556730	22 mm	28 mm	0.05 kg	UKCA, ERIFLEX MBJ, RoHS, UL, CE, ERIFLEX MBJ, Bureau Veritas, cUL
MBJ35-150-10	556780	22 mm	28 mm	0.05 kg	UKCA, ERIFLEX MBJ, RoHS, UL, CE, ERIFLEX MBJ, Bureau Veritas, cUL
MBJ50-100-10	556820	28 mm	33 mm	0.05 kg	UKCA, ERIFLEX MBJ, RoHS, UL, CE, ERIFLEX MBJ, Bureau Veritas, cUL
MBJ16-500-8	556940	15 mm	20 mm	0.08 kg	RoHS, UL, CE, ERIFLEX MBJ, Bureau Veritas, cUL, UKCA, ERIFLEX MBJ
MBJ25-250-10	556700	20 mm	28 mm	0.06 kg	cUL, UL, CE, ERIFLEX MBJ, Bureau Veritas, RoHS, UKCA, ERIFLEX MBJ
MBJ30-200-10	556740	22 mm	28 mm	0.06 kg	cUL, RoHS, UKCA, ERIFLEX MBJ, UL, CE, ERIFLEX MBJ, Bureau Veritas
MBJ25-300-10	556710	20 mm	28 mm	0.08 kg	UKCA, ERIFLEX MBJ, UL, CE, ERIFLEX MBJ, Bureau Veritas, cUL, RoHS
MBJ25-300-8	555201	20 mm	28 mm	0.08 kg	UL, CE, ERIFLEX MBJ, Bureau Veritas, cUL
MBJ25-500-10	556950	20 mm	28 mm	0.13 kg	cUL, RoHS, UKCA, ERIFLEX MBJ, UL, CE, ERIFLEX MBJ, Bureau Veritas
MBJ30-250-10	556750	22 mm	28 mm	0.07 kg	UL, CE, ERIFLEX MBJ, Bureau Veritas, RoHS, cUL, UKCA, ERIFLEX MBJ



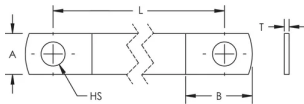
Catalog Number	Article Number	A	B	Unit Weight	Certifications
MBJ35-200-10	556790	22 mm	28 mm	0.07 kg	cUL, RoHS, UKCA, ERIFLEX MBJ, UL, CE, ERIFLEX MBJ, Bureau Veritas
MBJ30-300-10	556760	22 mm	28 mm	0.09 kg	UKCA, ERIFLEX MBJ, RoHS, UL, CE, ERIFLEX MBJ, Bureau Veritas, cUL
MBJ30-500-10	556960	22 mm	28 mm	0.15 kg	cUL, RoHS, UKCA, ERIFLEX MBJ, UL, CE, ERIFLEX MBJ, Bureau Veritas
MBJ35-250-10	556800	22 mm	28 mm	0.09 kg	UL, CE, ERIFLEX MBJ, Bureau Veritas, RoHS, cUL, UKCA, ERIFLEX MBJ
MBJ35-300-10	556810	22 mm	28 mm	0.11 kg	cUL, RoHS, UKCA, ERIFLEX MBJ, UL, CE, ERIFLEX MBJ, Bureau Veritas
MBJ35-500-10	556970	22 mm	28 mm	0.18 kg	UL, CE, ERIFLEX MBJ, Bureau Veritas, RoHS, cUL, UKCA, ERIFLEX MBJ
MBJ50-150-10	556830	28 mm	33 mm	0.08 kg	cUL, RoHS, UKCA, ERIFLEX MBJ, UL, CE, ERIFLEX MBJ, Bureau Veritas
MBJ35-250-25	565000	40 mm	45 mm	0.09 kg	UKCA, ERIFLEX MBJ, RoHS, UL, CE, ERIFLEX MBJ, Bureau Veritas, cUL
MBJ50-200-10	556840	28 mm	33 mm	0.12 kg	UL, CE, ERIFLEX MBJ, Bureau Veritas, RoHS, cUL, UKCA, ERIFLEX MBJ
MBJ50-200-12	563440	28 mm	33 mm	0.12 kg	UKCA, ERIFLEX MBJ, RoHS, UL, CE, ERIFLEX MBJ, Bureau Veritas, cUL

Catalog Number	Article Number	A	B	Unit Weight	Certifications
MBJ50-200-16	563360	28 mm	33 mm	0.11 kg	cUL, RoHS, UKCA, ERIFLEX MBJ, UL, CE, ERIFLEX MBJ, Bureau Veritas
MBJ50-200-18	563370	28 mm	33 mm	0.11 kg	UL, CE, ERIFLEX MBJ, Bureau Veritas, RoHS, cUL, UKCA, ERIFLEX MBJ
MBJ50-200-6	563350	28 mm	33 mm	0.12 kg	UKCA, ERIFLEX MBJ, RoHS, UL, CE, ERIFLEX MBJ, Bureau Veritas, cUL
MBJ50-250-10	556850	28 mm	33 mm	0.13 kg	cUL, RoHS, UKCA, ERIFLEX MBJ, UL, CE, ERIFLEX MBJ, Bureau Veritas
MBJ50-300-10	556860	28 mm	33 mm	0.15 kg	UL, CE, ERIFLEX MBJ, Bureau Veritas, RoHS, cUL, UKCA, ERIFLEX MBJ
MBJ50-300-16	563390	28 mm	33 mm	0.15 kg	UKCA, ERIFLEX MBJ, RoHS, UL, CE, ERIFLEX MBJ, Bureau Veritas, cUL
MBJ50-300-18	563400	28 mm	33 mm	0.14 kg	cUL, RoHS, UKCA, ERIFLEX MBJ, UL, CE, ERIFLEX MBJ, Bureau Veritas
MBJ50-300-6	563380	28 mm	33 mm	0.15 kg	UL, CE, ERIFLEX MBJ, Bureau Veritas, RoHS, cUL, UKCA, ERIFLEX MBJ
MBJ50-500-10	556980	28 mm	33 mm	0.26 kg	UKCA, ERIFLEX MBJ, RoHS, UL, CE, ERIFLEX MBJ, Bureau Veritas, cUL
MBJ50-500-12	563560	28 mm	33 mm	0.26 kg	cUL, RoHS, UKCA, ERIFLEX MBJ, UL, CE, ERIFLEX MBJ, Bureau Veritas

Catalog Number	Article Number	A	B	Unit Weight	Certifications
MBJ70-300-22	563480	40 mm	45 mm	0.2 kg	cUL, RoHS, UKCA, ERIFLEX MBJ, UL, CE, ERIFLEX MBJ, Bureau Veritas
MBJ70-300-10	563460	28 mm	33 mm	0.21 kg	cUL, RoHS, UKCA, ERIFLEX MBJ, UL, CE, ERIFLEX MBJ, Bureau Veritas
MBJ70-300-12	563420	28 mm	33 mm	0.21 kg	UL, CE, ERIFLEX MBJ, Bureau Veritas, RoHS, cUL, UKCA, ERIFLEX MBJ
MBJ70-300-16	563470	28 mm	33 mm	0.2 kg	UKCA, ERIFLEX MBJ, RoHS, UL, CE, ERIFLEX MBJ, Bureau Veritas, cUL
MBJ70-300-6	563450	28 mm	33 mm	0.21 kg	UL, CE, ERIFLEX MBJ, Bureau Veritas, RoHS, cUL, UKCA, ERIFLEX MBJ
MBJ70-500-10	563490	28 mm	33 mm	0.34 kg	UKCA, ERIFLEX MBJ, RoHS, UL, CE, ERIFLEX MBJ, Bureau Veritas, cUL
MBJ100-250-16	563500	40 mm	55 mm	0.25 kg	cUL, UL, CE, ERIFLEX MBJ, Bureau Veritas, UKCA, ERIFLEX MBJ, RoHS
MBJ100-250-30	563510	40 mm	55 mm	0.25 kg	RoHS, UL, CE, ERIFLEX MBJ, Bureau Veritas, cUL, UKCA, ERIFLEX MBJ
MBJ100-500-16	563520	40 mm	42.5 mm	0.51 kg	UKCA, ERIFLEX MBJ, UL, CE, ERIFLEX MBJ, Bureau Veritas, RoHS, cUL

Catalog Number	Article Number	A	B	Unit Weight	Certifications
MBJ100-500-30	563530	40 mm	55 mm	0.51 kg	cUL, UL, CE, ERIFLEX MBJ, Bureau Veritas, UKCA, ERIFLEX MBJ, RoHS

## DIAGRAMS



## WARNING

nVent products shall be installed and used only as indicated in nVent's product instruction sheets and training materials. Instruction sheets are available at [www.nvent.com](http://www.nvent.com) and from your nVent customer service representative. Improper installation, misuse, misapplication or other failure to completely follow nVent's instructions and warnings may cause product malfunction, property damage, serious bodily injury and death and/or void your warranty.

### North America

+1.800.753.9221  
Option 1 – Customer Care  
Option 2 – Technical  
Support

### Europe

Netherlands:  
+31 800-0200135  
France:  
+33 800 901 793

### Europe

Germany:  
800 1890272  
Other Countries:  
+31 13 5835404

### APAC

Shanghai:  
+ 86 21 2412 1618/19  
Sydney:  
+61 2 9751 8500



Our powerful portfolio of brands:

**CADDY ERICO HOFFMAN ILSCO SCHROFF TRACHTE**