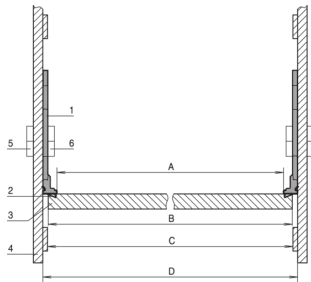


# EuropacPRO EMC Shielding Kit, Backplane to Side Panel

## Power Utilities



Vertical profile enables the EMC contact between the side panel and the backplane. The assembly grid is 30 mm.

## CERTIFICATIONS



## FEATURES

For vertical contact the support profile may be fixed to the side panel of the subrack or case (depth grid 30 mm)

With some designs the backplane can be used as the shielding rear panel of the subrack; for this a rear horizontal rail (type L-VT or H-VT) for recessed installation is required to ensure horizontal contact

## SPECIFICATIONS

Table 1/1

Catalog Number	Rack Height	Package Quantity	Length	Product Family	Product Type	Works With
24561-199	3 U	1	97.5 mm	EuropacPRO	Shielding Kit	Subracks
24561-499	6 U	1	187.5 mm	EuropacPRO	Shielding Kit	Subracks

## WARNING

---

nVent products shall be installed and used only as indicated in nVent's product instruction sheets and training materials. Instruction sheets are available at [www.nvent.com](http://www.nvent.com) and from your nVent customer service representative. Improper installation, misuse, misapplication or other failure to completely follow nVent's instructions and warnings may cause product malfunction, property damage, serious bodily injury and death and/or void your warranty.



Our powerful portfolio of brands:

**CADDY   ERICO   HOFFMAN   ILSCO   SCHROFF   TRACHTE**