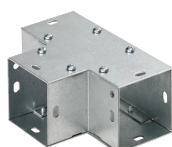


# Flush Tee 90-Degree Lay-in Galvanized

## Power Utilities



Lay-in Galvanized 90-Degree Flush Tees are used for flush mounting against a vertical or horizontal surface. Lay-in feature allows wires and cables can be laid in along wireway run. No pulling through of wires or cables prevents damage to insulation that often occurs in a pull-through wiring system.

### FEATURES

Lay-in Galvanized 90-Degree Flush Tees are used for flush mounting against a vertical or horizontal surface

Lay-in feature allows wires and cables can be laid in along wireway run

No pulling through of wires or cables prevents damage to insulation that often occurs in a pull-through wiring system

### SPECIFICATIONS

**Finish:** Galvanized

**Color:** Unpainted

Table 1/1

Catalog Number	Article Number	Type	Height	Width	Material	Thickness
F1010GTGV	46880	Tee	10 in	10 in	Mild Steel	14 ga
F1212GTGV	89140	Tee	12 in	12 in	Mild Steel	14 ga
F22GTGV	89100	Tee	2.5 in	2.5 in	Mild Steel	16 ga
F44GTGV	89110	Tee	4 in	4 in	Mild Steel	16 ga

CatalogNumber	Article Number	Type	Height	Width	Material	Thickness
F66GTGV	89120	Tee	6 in	6 in	Mild Steel	16 ga
F88GTGV	89130	Tee	8 in	8 in	Mild Steel	14 ga

## WARNING

nVent products shall be installed and used only as indicated in nVent's product instruction sheets and training materials. Instruction sheets are available at [www.nvent.com](http://www.nvent.com) and from your nVent customer service representative. Improper installation, misuse, misapplication or other failure to completely follow nVent's instructions and warnings may cause product malfunction, property damage, serious bodily injury and death and/or void your warranty.



Our powerful portfolio of brands:

CADDY   ERICO   HOFFMAN   ILSCO   SCHROFF   TRACHTE