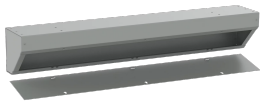


Angled Trough with Removable Cover NEMA Type 1, 6x6x60, Gray, Mild Steel

Power Utilities

CATALOG NUMBER

AT6660



Angled Trough, Type 1 cuts total installation time by 80%. It eliminates the need for costly 90-degree conduit bends and offers flexibility for wire distribution, making it a time and cost saving solution. The unique design allows conduit runs through the front of the enclosure, and can be mounted in any corner.

INDUSTRY STANDARDS

UL 870 Listed; File No. E27524

cUL CSA C22.2 No. 26 Listed; File No. E27524

NEMA/EEMAC: Type 1

IEC 60529, IP30

FEATURES

Flexible install allows conduit runs through six sides of enclosure, including the front

Cleaner appearance requiring less real estate on the wall

Uniquely designed cover is removable and easy to assemble with half the number of screws

Easy mounting via holes on the back of the enclosure

Shipped completely assembled with no end caps to install

PRODUCT ATTRIBUTES

Article Number: 35593

Type: Trough

Height: 6 in

Width: 6 in

Depth: 60 in

Protection Rating: NEMA Type 1; IP30

Material: Mild Steel

Max Conduit Size: 1.25 in

Cover Screw Quantity: 5

Color: Gray

Color Code: ANSI 61

Finish: Powder Coated

Thickness: 16 ga

WARNING

nVent products shall be installed and used only as indicated in nVent's product instruction sheets and training materials. Instruction sheets are available at www.nvent.com and from your nVent customer service representative. Improper installation, misuse, misapplication or other failure to completely follow nVent's instructions and warnings may cause product malfunction, property damage, serious bodily injury and death and/or void your warranty.



Our powerful portfolio of brands:

CADDY

ERICO

HOFFMAN

ILSCO

SCHROFF

TRACHTE